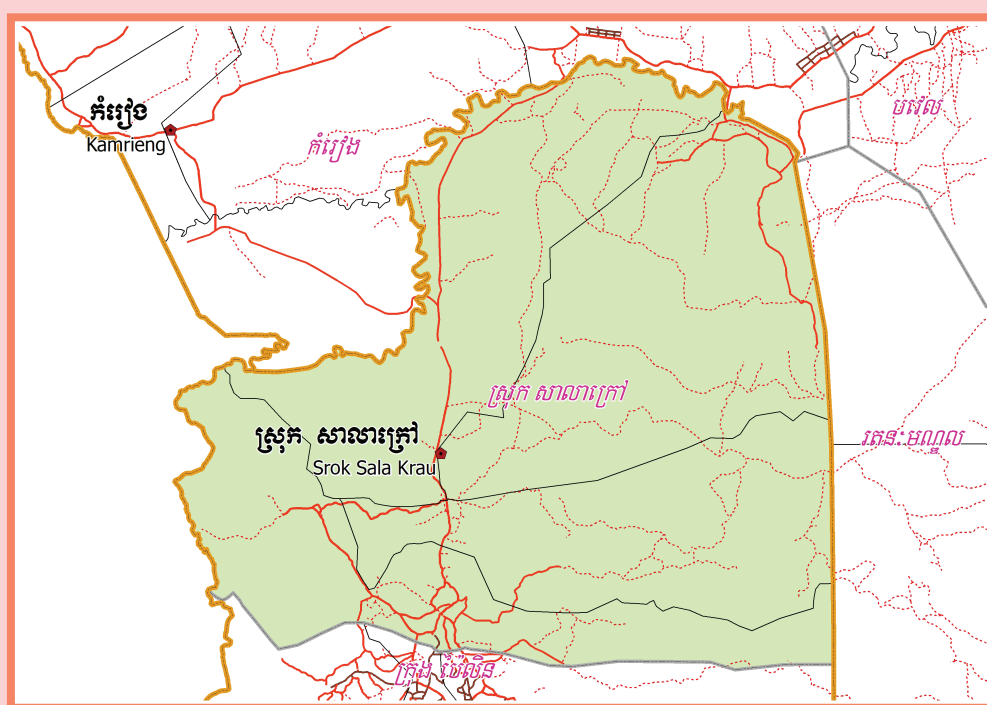


**KINGDOM OF CAMBODIA**  
**Nation Religion King**



**National Committee for Sub-National  
Democratic Development (NCDD)**



**SALA KRAU DISTRICT DATA BOOK 2009**

**District Code Nr: 2402**  
**Pailin Province**

**October 2009**



# **Sala Krau District Data Book 2009**

District Code Nr: 2402

**Pailin Province**



# Table of Contents

List of Abbreviations .....	i
Glossary.....	ii
Preface .....	vi
Introduction .....	vii
SECTION A: GEOGRAPHY .....	1
1 Administration and Infrastructure.....	3
2 Land Use and Natural Resources.....	5
3 Geography .....	7
3.1 Land Area .....	7
3.2 Distances between Offices .....	7
SECTION B: DISTRICT PROFILE .....	9
1 General Information .....	11
1.1 Population of the District.....	11
1.2 Occupations .....	12
1.3 Property .....	14
2 Infrastructure and Economy.....	16
2.1 Roads in meters over 3 years.....	16
2.2 Sewerage Pipes in meters over 3 years.....	16
2.3 Drainage and Bridges .....	16
2.4 Services in the District .....	16
2.5 Agriculture.....	17
3 Social Aspects .....	28
3.1 Education .....	28
3.2 Health.....	34
3.3 Water and Sanitation .....	36
3.4 Vulnerable groups.....	40
3.5 Migration .....	42
4 Natural Resources and Environment (NRE).....	44
4.1 Families involved with NRE issues over 3 years .....	44
4.2 Percentage of Families involved with Natural Resource issues, by Commune, for 2008 .....	44
4.3 Percentage Houses with access to Garbage collection and Families affected by environmental Pollution, by Commune, for 2008 .....	44
4.4 Percentage Families using chemical Fertilizer and chemical Pesticides, by Commune, for 2008 ..	45
5 Administration and Security .....	45

5.1	Birth Registration across 3 years.....	45
5.2	Number of unregistered Infants born in 2008, by Commune .....	45
5.3	Registered criminal Cases over 3 years .....	45
5.4	Registered criminal Cases per 10,000 people, by Commune, for 2008.....	46
5.5	Number of registered Land Disputes, by Commune, in 2008 .....	46
6	Gender .....	47
6.1	Registered Domestic Violence over 3 years.....	47
6.2	Percentage of registered cases of Families experiencing domestic Violence, by Commune, in 2008 .....	47
6.3	Women's involvement over 3 years.....	47
6.4	Percentage of Female Participants in Civil Society and of 18-60 year women with uncertain Jobs, by Commune, in 2008 .....	48
6.5	Female-headed Households over 3 years.....	48
6.6	Percentage female-headed Households and with Children of less than 5 years old, by Commune, in 2008 .....	48
7	Indigenous People in the District .....	49
7.1	Ethnic Minorities in the District over 3 years.....	49
7.2	Other Minorities in the District over 3 years.....	49
	SECTION C: PLANS AND PROJECTS .....	51
8	Priorities and Plans .....	53
8.1	Priorities of Commune Councils for 2009 in the District by Sector .....	53
8.2	Temporary Agreements by Commune, for 2009 .....	56
8.3	Outputs, estimated and actual costs of C/S Fund Projects between 2005 and 2008, by Commune .....	65
8.4	Total Expenditure on C/S Fund Projects by sector and commune between 2005 and 2008.....	66
8.5	Actual 2009 C/S Fund projects by Commune .....	66
9	District level Projects from 2006 to 2009 .....	67
9.1	District Initiative Infrastructure Projects from 2006 to 2009 .....	67
9.2	District Initiative Service Projects from 2006 to 2009 .....	68
9.3	Inter Commune Council Projects in 2008 and 2009 .....	69
9.4	Other Projects in 2008 and 2009 .....	69
	SECTION D: SERVICES AND ORGANIZATIONS .....	71
10	Infrastructure.....	73
10.1	Length of and Expenditure on Roads in 2008, by District .....	73
10.2	Scale of and Expenditure on Irrigation in 2008, by District.....	73
10.3	Power Supply in 2008, by District .....	74
11	Health Facilities.....	75

11.1 Health Facilities in the Province, by Operational District.....	75
11.2 Health Facilities and Staff in the province, by Operational District.....	75
11.3 Deliveries in 2007 in the Province, by Operational District.....	76
12 Education .....	76
12.1 Schools, Classes, Students, Staff, for for all levels, for 2007/2008 by District.....	76
12.2 Characteristics of Schools and School Principals for 2007/2008 by Commune .....	76
12.3 Enrolment by Level of Education, 2006/2007 by Commune .....	77
12.4 Enrolment by Level of Education, 2007/2008 by Commune .....	77
12.5 Aspects of Enrolment for 2007/2008 by Commune.....	77
12.6 School Buildings for all schools in the District for 2007/2008, by Commune .....	77
12.7 Conditions of Classrooms and Existence of Separate School Office and Library, by Commune	78
12.8 Community Participation and Financing across all schools in the District for 2007/2008 by Commune .....	78
12.9 Percentage Student Flow Rates and Graduation by level 2006/2007, by Commune .....	78
13 Staff and Resources at the District .....	79
13.1 District Councilors elected in 2009 .....	79
13.2 Committees of the Council.....	79
13.3 Board of Governors.....	80
13.4 Offices under Sala Krong, Sala Srok and Sala Khan .....	80
13.5 Municipality/District/Khan line offices.....	80
13.6 Properties and Equipment of District Administration .....	81
13.7 Registered Revenue of the District Administration in 2008 .....	82
13.8 Services in the District .....	82
13.9 Civil Society Organizations active in the District.....	82
13.10 Private Sector Organizations.....	83
SECTION E: POVERTY DATA .....	85
14 Data on Poverty .....	87
14.1 Predicted Poverty Rates for 2009, by commune .....	87
14.2 Poverty data from survey.....	87





## List of Abbreviations

#	Number
AGR	Agriculture
BR	Birth Registration
C. Pilot	Piloted Commune
C/S	Commune / Sangkat
CBO	Community-Based Organization
CDB	Commune Database
CDPD	Commune Development and Planning Database
CIP	Commune Investment plan
CLTS	Community Led-Total Sanitation
Comm.	Commune
Com Cov	Commune Covered
CPA	Complementary Package of Activities
CPS	Community Preschool
CCWC	Commune Committees for Women and Children
DANIDA	Danish International Development Agency
DDLG	Democratic Development and Local Governance Project (EC-UNDP)
DFID	Department For International Development (UK)
DIP	District Initiative Project
DIS	District Information System
District PDRD	District Office of Rural Development
District WP	District Work Plan
DIW	District Integration Workshop
DoLA	Department of Local Administration
Dr	Doctor
DWRM	District Office of Water Resource and Meterology
ECD	Early Childhood education (part of PE)
EMIS	Education Management Information System
Event IC	Celebration of International Days
FDH	Former District Hospital
GTZ	German Society for Technical Cooperation (Gesellschaft für Technische Zusammenarbeit GmbH)
Ha	Hectare
HC	Health Center
HC (NB)	Health Center (no building)
HH	Headed Household
HSI	Intervention for Health
HP	Health Post
HW	Hand Washing
ICC	Inter Commune Council
IFAD	International Fund for Agricultural Development
IND	Industry
Inter-commune	Inter-Commune Project Management Committee or Inter-commune project
IO	International Organization
LASED	Land Allocation for Socio-Economic Development
LGCR	Local Governance for Children's Rights
M&E	Monitoring and Evaluation
MA	Medical Assistant
MoEYS	Ministry of Education, Youth and Sports
MoH	Ministry of Health

MoP	Ministry of Planning
MPA	Minimum Package of Activities
MW1	Primary Midwives
MW2	Secondary Midwives
n/a	Not available
NCD	National Contracts Database
NCDD	National Committee for Sub-National Democratic Development
NGO	Non-Governmental Organization
NRML	Natural Resources Management and Livelihood
NU1	Primary Nurse
NU2	Secondary Nurse
OD	Operational District
ODF	Open Defecation Free
Ope. Costs	Operational Costs
Others	Other Staff
PBW	Public Works
PDoEYS	Provincial Department of Education, Youth and Sport
PDRD	Provincial Department of Rural Development
PDWRM	Provincial Department of Water Resource and Meteorology
PE	Parenting Education
PHAST	Participatory Hygiene and Sanitation Transformation
PHD	Provincial Health Department
PID	Project Information Database
PMC	Project Management Committee
Pop 04-05	Population Covered 2004 or 2005
PSDD	Project to Support Democratic Development through Decentralization and Deconcentration
RRD	Rural Road Development
RH	Referral Hospital
RILGP	Rural Investment and Local Governance Project
RPRP	Rural Poverty Reduction Program
RuLIP	Rural Livelihoods Improvement Program
SIDA	Swedish International Development Cooperation Agency
SPPA	Senior Provincial Program Advisor
TBA	Traditional Birth Attendant
UNDP	United Nations Development Project
UNICEF	United Nations Children's Fund
Vil	Village
Vil Cov	Village Covered
VIL-HC	Distance from Village to Health Center
WASH	Water, Sanitation and Hygiene
WRM	Water Resource and Meteorology

## Glossary

**C/S Fund:** The Commune/Sangkat Fund is established and managed by the Government of Cambodia to provide financial support for development projects and administrative costs of Commune/Sangkat Councils. The amount is determined as a percentage of the National Budget (for 2009: 2.8% over the 2008 budget) and is expected to increase gradually over the years. The total 2009 budget under this fund is \$ 27,643,902 (of which \$ 19,272,170 is for Development Projects and \$ 8,371,731 for Administration). Under the Rural Investment and Local Governance Project the World Bank currently reimburses the costs of development projects if these meet the Bank's criteria.

**CDB:** the Commune Data Base is a national database, compiled by the Ministry of Planning, on the basis of detailed questionnaires, completed at village and commune level, which are then sent to the Departments of Planning for data entry. The most recent round of data collection took place at the end of 2008 (and is reflected in the District Data Books). Commune, District and Provincial Profiles can be generated from this database and should be available from provincial Departments of Planning.

**CDPD:** the Commune Development and Planning Database is a database maintained by Departments of Planning and Ministry of Planning, recording proposed activities as determined and prioritized by Commune and Sangkat Councils; the Temporary Agreements between these councils and supporting agencies, as decided at District Integration Workshops and details on projects that actually take place at commune, district and provincial levels.

**CIP:** The Commune Investment Plan is a rolling three-year plan, developed and decided by the Commune or Sangkat Council. It sets priorities and identifies the projects proposed for the years to come.

**Commune and Sangkat (C/S):** the Communes (in rural areas) and Sangkats (in urban areas) are the lowest and smallest units of local government. Councils are elected directly, once in five years, for the 1417 Communes and 204 Sangkats. In the C/S there are 14,119 villages, which have Village Chiefs, but don't constitute a formal level of local government.

**DIP:** the District Initiative Project is jointly supported by the MDLF (Multi-Donor Livelihood Facility (supporting the NRM&L Program)) and PSDD. In 2009 it covers 106 districts, 60% of the total in the country, with a budget of \$ 3.2 million. It is focused on capacity development in planning, democratic development, public competitive procurement, financial management and service delivery.

**DIS:** The District Information System is a national database maintained by NCDD, recording resources, staff, revenue, infrastructure and equipment available in the 193 Districts and Khans throughout the country. The last update took place in July 2009

**District, Municipality and Khan** constitutes the third level of Government in Cambodia. There are 159 rural Districts, 26 Municipalities and 8 Khans of Phnom Penh Capital. They all have Councils which were, for the first time, elected in May 2009, by the Commune/Sangkat Councilors. These councils have a mandate for 5 years.

**DIW:** District Integration Workshops are held between July and October, to bring Commune/Sangkat Councils, looking for support for their projects, together with the governmental and non-governmental agencies that may provide support.

**ICC:** Inter Communes Council projects are executed in 10 provinces under the Democratic and Decentralized Local Governance Project (DDLG). This five year project (2006-2010) is executed by Ministry of Interior and funded by the European Commission and UNDP. The project focuses on improving dialogue partnership and accountability; create a network of Commune Councils at the provincial and national level and support and contribute to local area development for poverty reduction. The work under the ICC component supports investments and services formulated through inter-commune dialogue and planning.

**MEDiCAM:** A non-profit and non-partisan membership organization for NGOs active in Cambodia's health sector. It is the primary networking agency for health-related NGOs

**NCDD:** the National Committee for sub-National Democratic Development is the inter-ministerial body charged with the implementation of the Organic Law (a key legislative document, adopted in 2008, outlining the envisaged decentralization). NCDD also channels substantial financial assistance by a number of Development Partners, to projects and programs at various levels. This amounted to over \$ 91 million in 2008. More information at: [www.ncdd.gov.kh](http://www.ncdd.gov.kh). This website also provides access to reports, manuals, legal documents, details on projects and more.

**OD:** the Operational Districts are the districts as defined and used by the Ministry of Health. These do not coincide with the 193 (Administrative) Districts and Khans, as used by all other RGC agencies. The Operational Districts are usually larger, and so there are 77 Operational Districts against 193 administrative Districts and Khans. However they do fit within the boundaries of administrative provinces.

**PID:** The Project Information Database is the database maintained by NCDD at national and sub national level, to follow all aspects of projects by Commune and Sangkat Councils, including the C/S Fund projects

### **Provincial Investment Fund (PIF)**

The Provincial Investment Fund is allocated to all Provinces and Municipalities according to a population based formula. Part of the fund is earmarked for support to planning activities of the Provincial / Municipal Department of Planning; and to gender mainstreaming activities of the Provincial Department of Women's Affairs. The remaining "un-earmarked PIF" is allocated by PRDC to sectoral technical departments against established criteria and in response to proposals with prioritisation taking into account: priorities formulated by the CS Councils and aggregated by District into District Priority Activities Matrices (DPAM); alignment with national planning and poverty alleviation criteria, complementarity with other planned activities; and performance of the Department concerned in implementation of activities in previous years. With this provisional allocation, the Department then programs activities through the District Integration Process. Finally, the agreed activities, plus support costs amounting to no more than 25% of the total, are included in a sub-contract signed between PRDC and the Department, pursuant to the overall PSDD contract signed between NCDD and PRDC. Total budget has been around \$ 2 million per year.

**Province:** the 23 Provinces and Phnom Penh Capital City represent the 2<sup>nd</sup> layer of government. They vary in size, from very small, like Kep (approx. 36,000 people) and Pailin (approx. 70,000 people), or large but with small populations, like Mondulkiri (over 60,000 people), and Ratanakiri (over 153,000) to densely populated and large, like Kampong Cham (over 1.7 million people) and Kandal (approx. 1.4 Million people).

**PSDD:** the Project to Support Democratic Development through Decentralization and Deconcentration is funded by DFID (UK), SIDA (Sweden) and UNDP and runs from 2006 till the end of 2010 (including a one year extension). Annual budgets range from \$ 11 million to over \$ 18 million. The project provides core technical support to NCDD and to the provinces, financial support to the C/S Fund, District Initiative, Provincial Investment Fund and capacity building support through training, studies and advisory services.

**RILGP:** The Rural Investment and Local Governance Project is a World Bank funded project that provides substantial support to C/S Fund projects and to developing the required infrastructure, policies, systems and skills. It started in 2003 with a Loan for \$ 22 million for 2003-2007 and was then extended with a Grant of \$ 36 million for the period of 2007-2010. Discussions about a possible RILGP 2 are taking place between RGC and the World Bank.

**RPRP:** the Rural Poverty Reduction Project is a seven year project from 2004 till 2010, funded by IFAD and UNDP and implemented through the Ministry of Agriculture, Forestry and Fishery, supported by the Ministry of Interior and facilitated by NCDD. The project is active in the provinces Prey Veng and Svay Rieng and focuses on 120,600 households below poverty line. The objective is poverty reduction with the active participation of the poor through improved livelihoods, Strengthened capacity, Sustainable farming systems and natural resource management, new and/or rehabilitated infrastructure development, increase accessibility to technology, services and markets for their economic and social development.

**RULIP:** the Rural Livelihoods Improvement Project is implemented by the Ministry of Agriculture Forestry and Fisheries (MAFF)' Project Support Unit- PSU, with the NCDD playing the role of cooperating agency. Funded by IFAD and UNDP, the project will run till 2014. The target group consists of poor households who have little or even no land, few livestock or other assets and often many dependents. The main goal of the project is to directly or indirectly improve the livelihood systems, food security and incomes of a total of 33,900 rural poor, ethnic minority and female headed households in targeted village of Kratie, Preah Vihear and Ratanakiri provinces in a sustainable manner.

**Seth Koma:** The UNICEF funded Seth Koma program focuses on measurable action for children and women. During 2006 -2010 it is implemented in six provinces. Government and UNICEF pursue a set of inter-related goals, addressing critical stages of the life cycle of the child: a) Mothers have safe pregnancies and deliveries and healthy newborns; b) best possible start in life of infant; c) Children enter schools at the right age of six years; d) Children are protected from exploitation, abuse, violence, discrimination and other risks; and e) Youth and adolescents acquire life skills, express their views, participate in the decisions.

## **Preface**

The Government of Cambodia attaches great importance to optimal use of scarce resources and to participatory planning and management at all levels. The Organic Law which was adopted in 2008 provides the legal context for further steps towards improving and decentralizing planning, management and monitoring, and towards greater accountability and transparency of institutions at sub-national levels.

The Government has established elected Councils at the sub-national levels, and we will progressively give them the responsibilities, together with the human and financial resources, to deliver a wide range of public services. They will be more democratic, more efficient, more transparent and accountable, better at addressing gender and other inequalities, and at fighting corruption. We recognize that development does not come from government alone; it needs the involvement of citizens, civil society and the private sector, and the new system will facilitate this.

A central element in this process is the availability of information on any aspect of development to all concerned parties. The newly elected Councillors at District and Khan level, line departments operating at these levels, but also NGOs, Development Partners, Commune Councillors and citizens throughout Cambodia need information on problems and requirements, resources and opportunities, services and agencies, plans and projects. They will need such information to better understand the present situation, set targets for the future, monitor progress, know what others are doing and to apply resources wisely and this is the reason the District Data books will be so valuable.

The District Data Books are a major step towards full transparency and towards informed planning and decision-making. They provide all available data at District, Khan, Commune and Sangkat level in easily accessible formats, in Khmer and English, through over 16,000 printed copies, CD-ROMs and the NCDD website.

This is the first time in Cambodia (and possibly in South East Asia) that such detailed information is made so widely available and NCDD should be commended for the hard work that has gone into this. We also thank the Ministry of Planning, which provided the detailed data of the Commune Data Base, the sectoral ministries and provincial authorities who contributed data and the Development Partners who provided financial support.

It is our sincere hope that the publication of the District Data Books will strengthen capacities, especially at district levels, for evidence-based development planning. We also hope that this information will deepen the understanding among Ministries, Provincial Authorities, Development Partners, NGOs and research agencies of the realities at commune and district levels.

We call upon all to use and distribute this information, complement or correct where appropriate and to contribute new data in the years to come.

**Sar KHENG**

Deputy Prime Minister, Minister of Interior and Chairman of NCDD

## Introduction

### Purpose

The purpose of the District Data Books is to bring together information on any aspect of life and development of Districts, Khans, Communes and Sangkat, together and make this widely available. The primary targets are the newly elected District Councilors, district level line departments, provincial agencies, Development Partners and NGOs operating at this level. They need detailed knowledge on current living conditions, natural resources, infrastructure, agriculture and other economic activities, current service levels, past and planned projects and available resources.

While much information exists on many of the above aspects, it is often hard to access that information and much is lost to reports, databases and statistics that are not widely shared. Data are often only available in one language and often out-of-date, and many reports cover only one sector or region.

We found that these problems are especially acute at the district level. Now that Districts are becoming a much more significant level of local government and development planning, there is an urgent need for wide-ranging data to be used for setting base-lines, planning and prioritizing, monitoring and learning.

### Approach

We have attempted to identify and compile all available statistics, reports, maps and other data at district and/or commune level. From this we have selected information that is available for all or most districts, reasonably reliable and up-to-date, sufficiently detailed and of possible interest to development planners, decision makers, agencies and citizens.

The major sources of the information in these District Data Books are:

- a) The Commune Data Base information over the years 2006 to 2009 (the most recent data were collected late last 2008), as compiled by the Ministry of Planning
- b) Detailed information directly collected from the Ministry of Health, the Ministry of Education, Youth and Sports and (for maps) the Ministry of Land Management, Urban Planning and Construction
- c) The Project Information Database (PID) at NCDD (up-to-date)
- d) The Commune Development and Planning Database (CDPD) (up to date)
- e) The District Information System (DIS) (updated per Mid 2009)
- f) Direct data collection at provincial and district level on private sector, irrigation, roads, and electricity, through provincial agencies
- g) Medical data collected from MEDiCAM
- h) The ID Poor Project – for poverty data on a number of provinces and districts
- i) NCDD's work on predictive poverty rates
- j) Specific projects for outputs, plans and budgets (Seth Koma, RILGP, RPRP and ICC)

### Limitations of the data

We are fully aware that the data we collected are not always complete, consistent or correct. While we have rejected information that was wrong or very incomplete, we decided not to aim for statistical and scientific perfection, but to include information that is useful, relevant

and comprehensive. We also accepted different sources for the same data as this may encourage discussion on the quality of the respective data.

We strongly encourage anyone who notes errors or incompleteness in these data to contact us and to share their data. We hope that the next round of producing such District Data Books can draw on wider sources and more complete data.

We encourage the District Administrations, who receive these data also in digital format, not only to use these for their planning and monitoring, but also to start correcting and updating these data and to share new data with NCDD for future use.

## Contents

The information in the following pages is organized in five sections:

- a) **Geographical data:** this section provides maps on infrastructure and administration and on land use and natural resources management. These maps are also provided in large format to all Districts and Khans.
- b) **District Profile:** this presents wide ranging data, covering 2006 – 2009, at district and commune level, extracted from the Commune Data Base, but edited for better understanding.
- c) **Plans and Projects:** this section presents development priorities determined by Commune and Sangkat Councils, Temporary Agreements, outputs and expenditure of major projects at Commune and District level over 2006 – 2008 and plans and budgets for 2009.
- d) **Services and Organizations:** this section provides details on key infrastructure (roads, electricity, irrigation systems) and services in health and education at district and commune level. It also provides an inventory of resources at the District Administration, NGOs operating in the district and private sector agencies active in the district.
- e) **Poverty Data:** this section provides predicted poverty rates for 2009 for all districts and communes and detailed poverty data compiled and processed by the ID Poor project for those that have been covered by this project.

## The future

It is our hope that this is the start of a longer-term process. We hope that a next edition of these District Data Books will offer more comprehensive, correct and up-to-date information. We hope that the District Administrations will not only start using this information, but also improve and update it. For this they are all provided with the full data set in digital format.

We invite agencies, projects and experts to send reports, statistics and maps that could be used for a next version to us and we invite all users of the District Data Books to inform us about errors, updates and inconsistencies. Please contact us through [info@ncdd.gov.kh](mailto:info@ncdd.gov.kh)

We now invite you to browse through this data book. You may open this randomly or use the table of contents and go to the aspects that have your special interest.

We hope that you will be informed, surprised and assisted. We hope, above all, that this information will lead to a deeper understanding of causes and effects of poverty, to purposeful decisions on how to tackle those causes and to greater transparency in using scarce resources for the benefit of all.

Martin de Graaf  
Program Advisor, PSDD/NCD



## **SECTION A: GEOGRAPHY**



# **1 Administration and Infrastructure**

Please see separate folder containing A3 maps.



## **2 Land Use and Natural Resources**

Please see separate folder containing A3 maps



### 3 Geography

#### 3.1 Land Area

Total Land Area (ha)	Forest Land Area (ha)		Cultivation Land Area (ha)	Construction Land Area (ha)	Other Land Area (ha)
	Total	Flooded Forest Area			
47559	30353	0	11572	1137	4497

#### 3.2 Distances between Offices

Location	Distance (Km)
From District Office to C/S Office of Sala Krau	3
From District Office to C/S Office of Stueng Trang	12
From District Office to C/S Office of Stueng Kach	12
From District Office to C/S Office of Ou Andoung	5





## **SECTION B: DISTRICT PROFILE<sup>1</sup>**

---

<sup>1</sup> All data in this section come from the Commune Database (CDB) unless otherwise specified. These include primarily new CDB data, collected late 2008, and some data from earlier years. Please note that percentages are rounded to the nearest whole number.



# 1 General Information

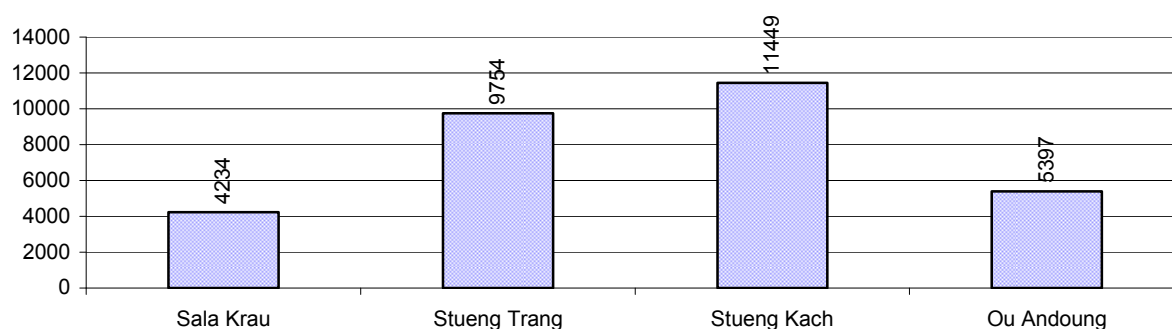
## 1.1 Population of the District

### 1.1.1 Total Population

Number of families	2005	2006	2007	2008
Total number of families	6,342 families	5,730 families	5,861 families	6,205 families
Increase (+)/Decrease (-) in nr of families		-10%	2%	6%
Total population	30,090 pers	29,870 pers	29,963 pers	30,834 pers
Increase (+)/Decrease (-) in nr of people		-1%	0%	3%
Number of female Headed Households (HH)	468 families	441 families	496 families	524 families

**Note:** Percentages of population and increase/decrease are calculated on basis of the previous year. A negative sign in front of the percentage indicates a decrease in population.

### 1.1.2 Population, by Commune, in 2008



### 1.1.3 Population, by Age Group, over 3 years

Population by age group	2006	2007	2008	
	%	%	%	Number
<b>Age 0-5 years (as percentage of the population)</b>	14%	14%	13%	4,039 persons
Male 0-5 yrs	52%	51%	53%	2,130 persons
Female 0-5 yrs	48%	49%	47%	1,909 persons
<b>Age 6-17 (as percentage of the population)</b>	35%	33%	30%	9,101 persons
Male 6-17 yrs	51%	51%	52%	4,755 persons
Female 6-17 yrs	49%	49%	48%	4,346 persons
<b>Age 18-60 (as percentage of the population)</b>	47%	49%	52%	15,926 persons
Male 18-60 yrs	51%	49%	51%	8,157 persons
Female 18-60 yrs	49%	51%	49%	7,769 persons
<b>Age 61 above (as percentage of the population)</b>	4%	3%	6%	1,768 persons
Male 61	50%	44%	20%	362 persons
Female 61	50%	56%	80%	1,406 persons

**Note:** The overall percentage for each age group is calculated on the basis of the total population. The gender distribution of each group is calculated on the basis of the population within that particular age group.

## 1.2 Occupations

### 1.2.1 Percentage of families with a particular Occupation over 3 years

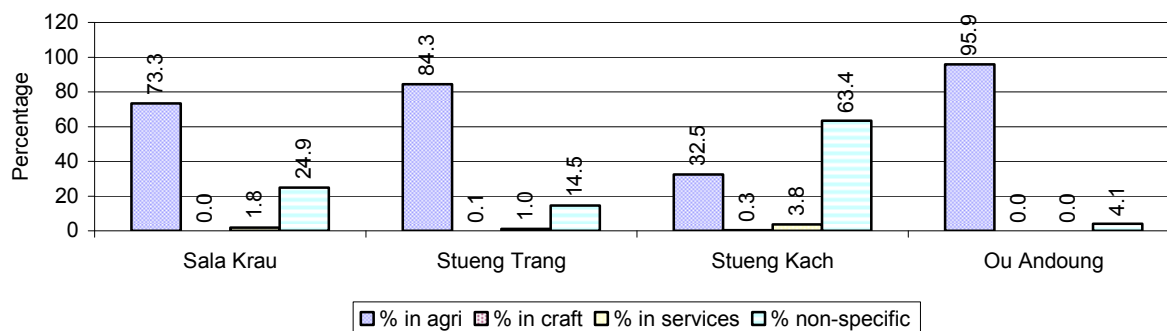
*This table shows the percentage of the population who have a particular occupation (job), for example the percentage of the population in the district who are rice farmers, furniture crafter, trader, etc.*

Description	2006	2007	2008	
	%	%	%	Number
<b>Families whose main occupation is agriculture</b>	76%	58%	64%	3,951 Families
Families whose primary occupation is rice farming	15%	17%	16%	1,014 Families
Families whose primary occupation is cultivating long-term crops	1%	2%	2%	155 Families
Families whose primary occupation is cultivating short-term crops	57%	37%	44%	2,735 Families
Families whose primary occupation is cultivating vegetable	1%	1%	1%	40 Families
Families whose primary occupation is fisherman	0%	0%	0%	0 Families
Families whose primary occupation is livestock farmer	2%	1%	0%	5 Families
Families whose primary occupation is NTFP collection	0%	0%	0%	2 Families
<b>Families whose main occupation is craft work</b>	0%	0%	0%	9 Families
Families, whose main occupation is in furniture craft, wooden, rattan, vine, bamboo	0%	0%	0%	5 Families
Families whose main occupation is in metal, aluminum, glass goods production	0%	0%	0%	1 Families
Families whose main occupation is food production	0%	0%	0%	1 Families
Families whose main occupation is tire, plastics and rubber goods production	0%	0%	0%	2 Families
Families whose main occupation is textile, clothing goods production	0%	0%	0%	0 Families
Families whose main occupation is in other production, not listed above	0%	0%	0%	0 Families
<b>Families whose main occupation is services</b>	3%	1%	2%	129 Families
Families whose main occupation is trade	1%	0%	1%	56 Families
Families whose main occupation is repair	0%	0%	0%	28 Families
Families whose main occupation is providing transport services	1%	0%	0%	19 Families
Families whose main occupation is providing other services	1%	0%	0%	26 Families
Families whose main occupation is not clear (or multi)	20%	40%	34%	2,116 Families

**Note:** The occupation percentages are calculated on the basis of the total number of families.

### 1.2.2 Percentage Families that work in one of four occupational sectors, by Commune in 2008

This table indicates the percentage of families involved in one of four occupation types: agriculture, craft, services or non-specific (other). Please note agriculture includes forestry activities such as cutting down trees and gathering gum from the trees.



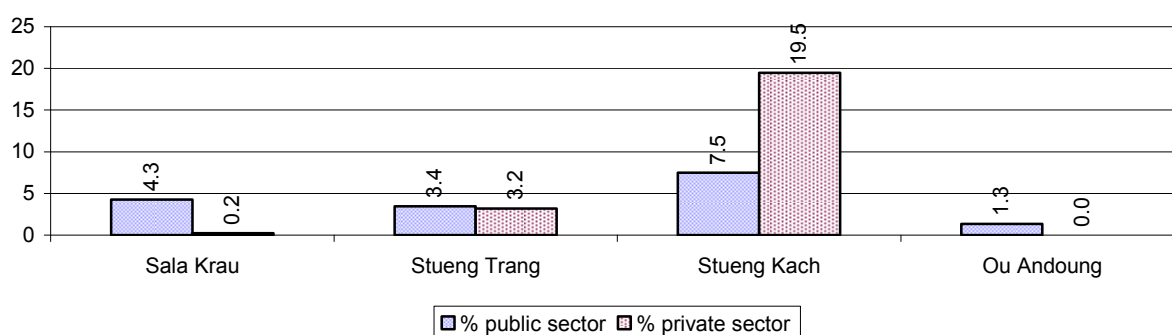
**Note:** Calculated on the basis of the total number of families within a commune.

### 1.2.3 Percentage of Families with public Sector, private Sector or uncertain Jobs, over 3 years

Description	2006	2007	2008	
	%	%	%	Number
Families that have a family member who is a government official, staff or worker	7%	4%	5%	300 families
Families that have a family member who is a private sector staff or worker	6%	6%	9%	545 families
Number of people aged 18-60 with uncertain/irregular jobs	11%	11%	8%	1,237 persons

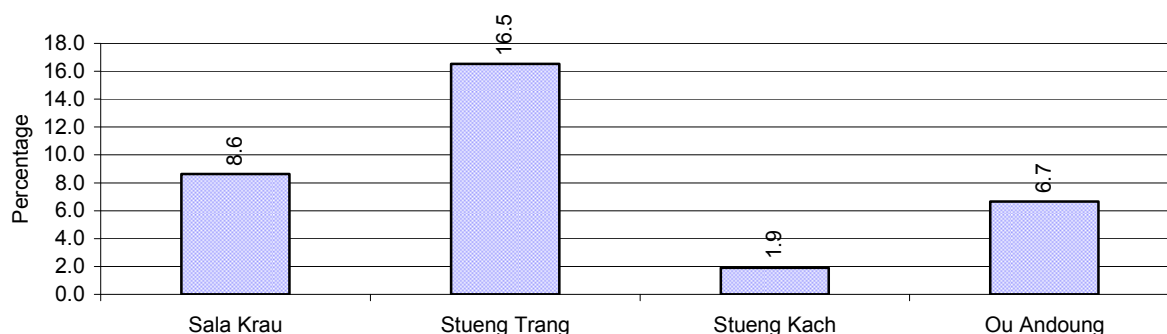
**Note:** In the first two rows percentages are calculated on the basis of the total number of families. In the third row the percentage is calculated on the basis of the total number of people aged 18-60 years.

### 1.2.4 Percentage of Families with public or private Sector Jobs, by Commune in 2008



**Note:** Calculated on the basis of the total number of families in the commune

### 1.2.5 Percentage of People aged 18-60 years with uncertain/irregular Jobs, by Commune, in 2008.



## 1.3 Property

### 1.3.1 Housing types and facilities over 3 years

This table shows the percentage of people living in a certain type of house. It also indicates how many houses have electricity or battery powered lights and how many have TV.

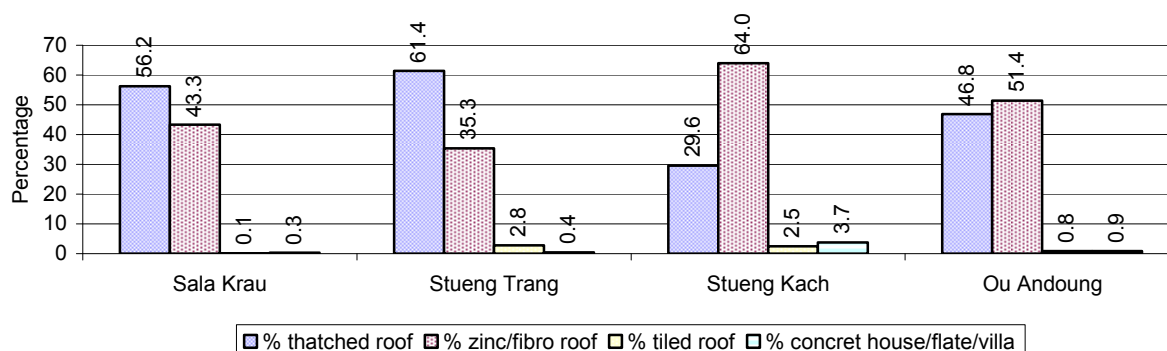
House Type	2006	2007	2008	
	%	%	%	Number
House with thatched roof	67 %	54 %	46 %	2,632 houses
House with zinc/fibro roof	32 %	45 %	51 %	2,932 houses
House with tiled roof	1 %	1 %	2 %	112 houses
Flats/apartments (with many families living)	0 %	0 %	1 %	52 houses
Concrete house or flat (with one family living)	0 %	0 %	1 %	51 houses
Villa house	0 %	0 %	0 %	5 houses
Houses with electricity	21 %	22 %	29 %	1,683 houses
Houses with battery light	30 %	35 %	40 %	2,328 houses
Houses with TV	30 %	31 %	40 %	2,333 houses

**Note:** Calculated against the total number of houses

### 1.3.2 Families living on public Land or without a permanent House

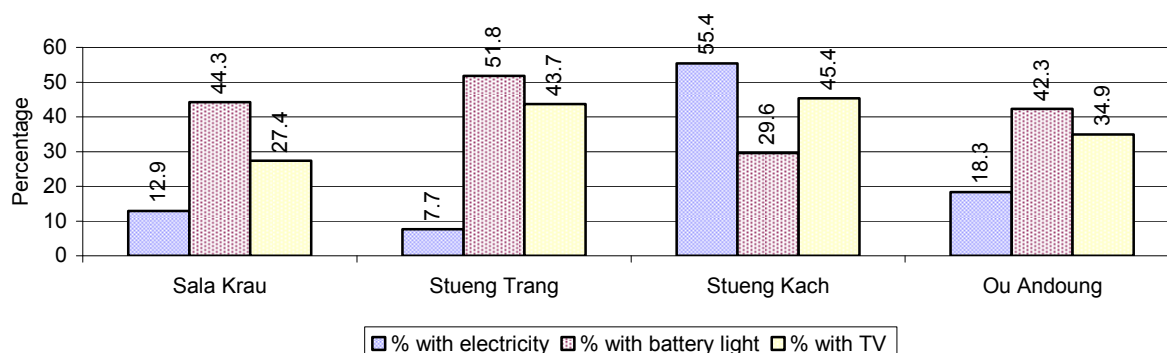
Living situation	2006	2007	2008
Families living in a house on public land	366 families	98 families	417 families
People, without permanent housing	26 person(s)	14 person(s)	33 person(s)

### 1.3.3 Percentage of Population living in a particular type of House, by Commune, in 2008



**Note:** Calculated against the total number of houses in each commune

### 1.3.4 Percentage of Houses with Electricity, Battery Lights and/or TVs, by Commune, in 2008



**Note:** Calculated against the total number of houses in each commune

### 1.3.5 Types of Vehicles and their ratio to Families across 3 years

This table shows the number of families per vehicle in the district. The last column shows the total number of each type of vehicle in the district for 2008.

Description	2006 ratio	2007 ratio	2008	
			Ratio	Number
Bicycle and bicycle with trailer	5	6	6	1,011
Ox-carts and horse-carts	50	46	57	109
Motorbike/with trailer	3	3	2	2,845
Motor tri-cycle	1,433	1,465	689	9
Large Transportation				
<b>Total number of cars/trucks</b>	28	19	16	391
Locally made vehicles	60	52	45	139
Trucks for goods transport	125	59	77	81
Buses/mini buses for passengers	819	1,465	365	17
Family cars	97	64	40	154
Agriculture machinery				
Tractors used for plowing	78	67	40	154
Power-tillage used for plowing	31	23	19	332
Other type of machinery				
Other type of machinery	441	80	3,103	2
Water transportation				
Row boats	2,865	1,172	689	9
<b>Total number of motor boats</b>	N/A	N/A	1,551	4
Motor boats used for fishing	N/A	N/A	1,551	4
Motor boats used for passengers	N/A	N/A	N/A	0
Motor boats used for goods transporting	N/A	N/A	N/A	0

**Note:** Ratio of families to a particular type of vehicle is the result of the total number of families divided by total number of that type of vehicle. Other types of vehicles, such as bulldozer, excavator, rollers etc. are not listed.

## 2 Infrastructure and Economy

### 2.1 Roads in meters over 3 years

Description	2006	2007	2008
Bituminous road	0 m	3,750 m	0 m
DBST, Macadam road	0 m	0 m	0 m
Concrete road	0 m	0 m	0 m
Laterite road	52,654 m	3,235 m	51,240 m
Constructed earth road	378,800 m	32 m	12,180 m
Un-constructed earth road	127,002 m	84 m	0 m

### 2.2 Sewerage Pipes in meters over 3 years

Description	Sewage pipe length		
	2006	2007	2008
Total length of sewage pipe, diameter 30-50 cm	20 m	20 m	0 m
Length of newly constructed sewage pipe, diameter 30-50 cm	40 m	40 m	0 m
Length of sewage pipe, diameter 30-50 cm needs repair/rehabilitation	10 m	10 m	0 m
Total length of sewage pipe, diameter of pipe 60-100 cm	32 m	32 m	0 m
Length of newly constructed sewage pipe, diameter 60-100 cm	20 m	20 m	0 m
Length of sewage pipe, diameter 60-100 cm needs repair/rehabilitation	8 m	8 m	0 m
Sewage pipe, diameter of pipe over 100 cm	84 m	0 m	78 m
Length of newly constructed sewage pipe, diameter over 100 cm	40 m	0 m	60 m
Length of sewage pipe, diameter over 100 cm needs repair/rehabilitation	32 m	0 m	0 m

### 2.3 Drainage and Bridges

Construction Type	2006		2007		2008	
	place(s)	Length	place(s)	Length	place(s)	Length
Single pipe culvert	51	287m	8	32 m	12	74 m
Double-pipe culvert	3	19m	2	14 m	4	33 m
Box pipe culvert	0	0m	0	0m	1	12 m
Wooden bridge	3	69m	2	54m	2	22 m
Concrete bridge	2	175m	0	0m	3	87 m
Bale bridge	0	0m	0	0m	2	60 m
Spillway construction	1	11,700m	1	11,700m	9	47 m

### 2.4 Services in the District

Descriptions	Number of places by year		
	2006	2007	2008
<b>Public</b>			
Electricity generating stations	2	2	2
Health clinics	0	0	1
<b>Private</b>			
Bicycle and motorcycle repair places	87	93	27
Agricultural machinery, tools and equipment repair places	7	7	3
Electronic tool repair places	2	2	0
Battery-charging services	14	15	21
Handicraft places, wooden furniture and forest by-products	5	5	8
Other handicraft places (excluding furniture)	3	3	0
Small-scale services (hairstylist, phone service, massage,	15	57	17



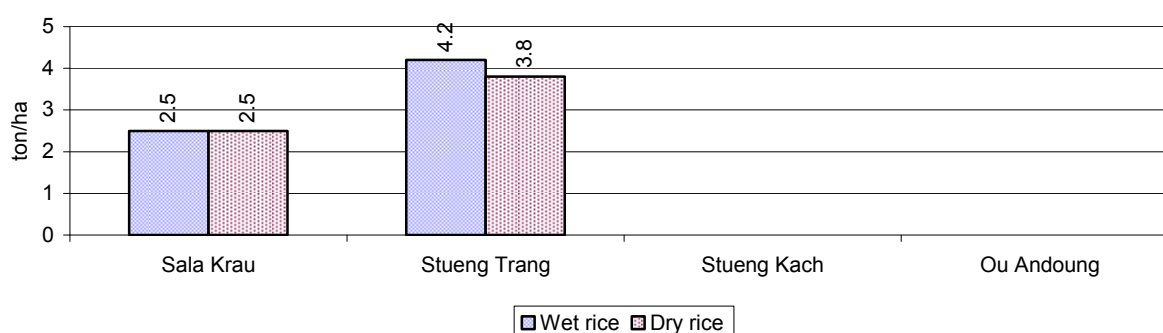
Descriptions	Number of places by year		
	2006	2007	2008
Karaoke, etc)			
Small-scale food shop businesses (Food, groceries, drink shop, etc)	27	20	112
Small-scale rice mills	9	2	28
Medium or large-scale rice mills	1	0	2
Small-scale markets	2	2	4
Large-scale market	1	0	0
Alcohol refinery places	34	32	10
Pharmacies and small drug stores	5	5	0
Hotels	0	0	3
Guest houses	0	0	4
Restaurants	0	0	2
Gasoline stations	2	0	1

## 2.5 Agriculture

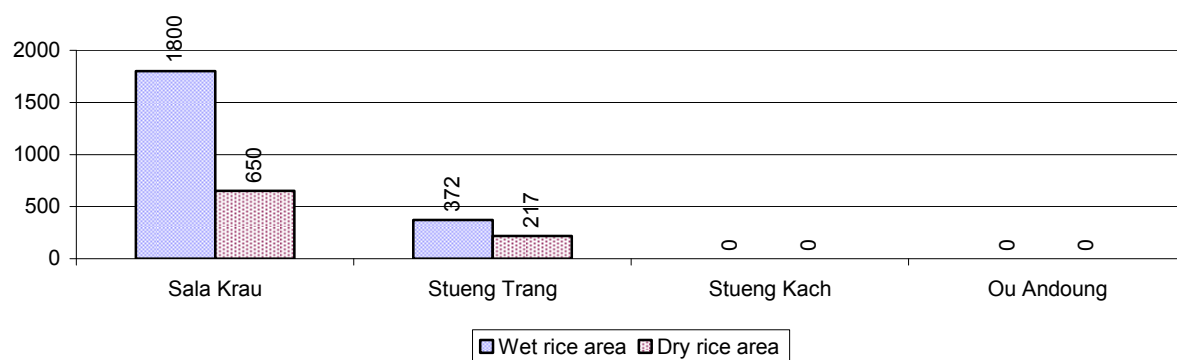
### 2.5.1 Rice cultivation in the District over 3 years

Description	2006	2007	2008
Total dry rice land area	1,282 ha	650 ha	1,282 ha
Actual dry rice cultivation area	453 ha	0 ha	867 ha
% actual cultivation to total land	35%	0%	68%
Total dry rice production	1,019 tonne(s)	- tonne(s)	2,731 tonne(s)
Average dry rice yield	2.3 tonne(s)/ha	- tonne(s)/ha	3.2 tonne(s)/ha
Total wet rice land area	181 ha	3,758 ha	4,138 ha
Actual wet rice cultivation area	100 ha	19 ha	2,172 ha
% actual cultivation to total land	55 %	1%	52%
Total wet rice production	100.00 tonne(s)	57.00 tonne(s)	7,276.20 tonne(s)
Average wet rice yield	1.0 tonne(s)/ha	3.0 tonne(s)/ha	3.4 tonne(s)/ha
Total intensive rice land area	43 ha	0 ha	104 ha
Actual intensive rice cultivation area	98 ha	- ha	312 ha
Average intensive rice yield	2.1 tonne(s)/ha	- tonne(s)/ha	3.0 tonne(s)/ha
Actual upland rice cultivation area	27 ha	8 ha	174 ha
Total upland rice production	68 tonne(s)	20 tonne(s)	696 tonne(s)
Average upland rice yield	2.5 tonne(s)/ha	2.5 tonne(s)/ha	4.0 tonne(s)/ha

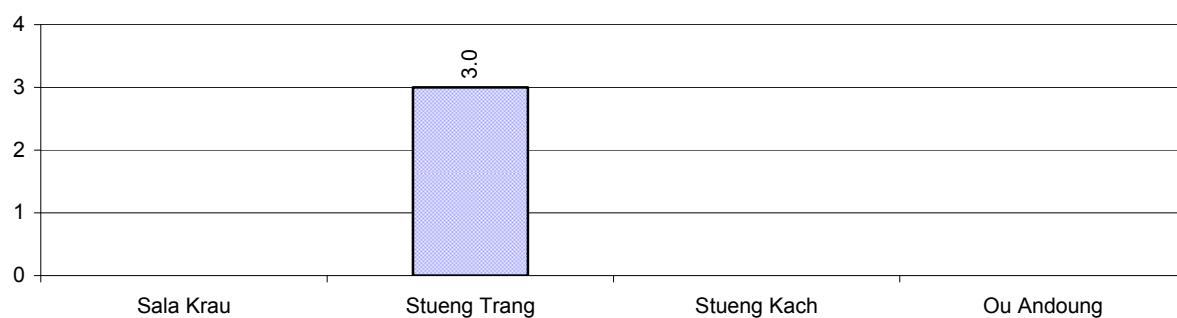
### 2.5.2 Estimated wet and dry Season Rice Yield in tonne(s)/Ha, by Commune, in 2008



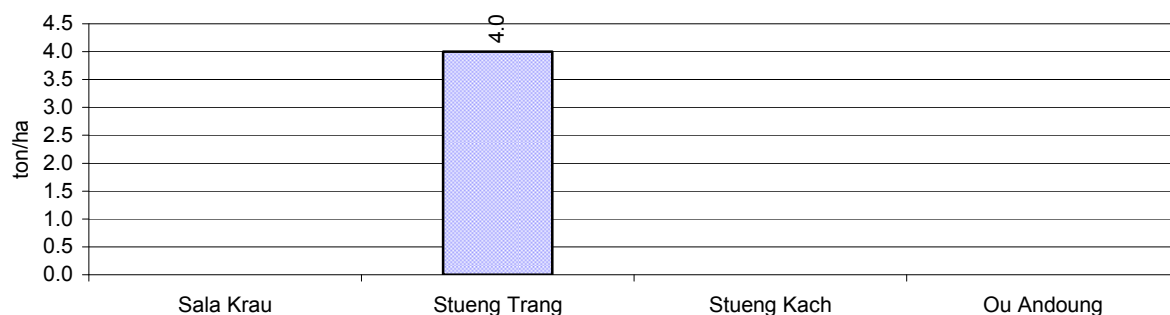
### 2.5.3 Cultivated wet and dry Season Rice areas in Ha, by Commune, in 2008



### 2.5.4 Estimated intensive Rice Yields in tonnes/Ha, by Commune, for 2008



### 2.5.5 Estimated upland Rice Yield in tonnes/Ha, by Commune, for 2008

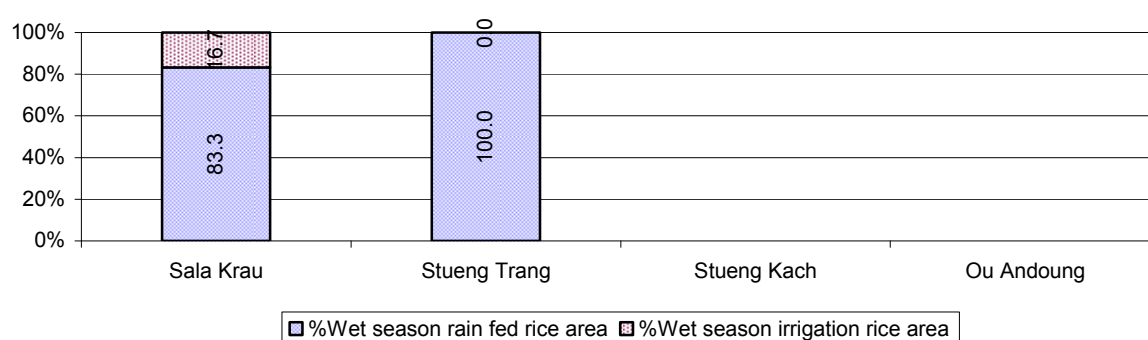


### 2.5.6 Wet season Rice irrigation across 3 years

Description		2006 %	2007 %	2008	
				%	Number
Total area of wet season rain fed rice land		100%	100%	86 %	1,872 ha
Percentage of wet season rice land that is irrigated; and for 2008 area in Ha		0 %	0 %	14 %	300 ha
Where	Area irrigated from canal/dam	- %	- %	100 %	300 ha
	Area irrigated from river, stream, lake, natural pond	- %	- %	0 %	0 ha
	Area irrigated from drilled well	- %	- %	0 %	0 ha
	Area irrigated from dug pond	- %	- %	0 %	0 ha

### 2.5.7 Water sources for wet Season Rice Cultivation, by Commune, in 2008

This chart shows the percentage of wet season rice cultivation receiving water from rain (natural) and from irrigation.



### 2.5.8 Access to Irrigation

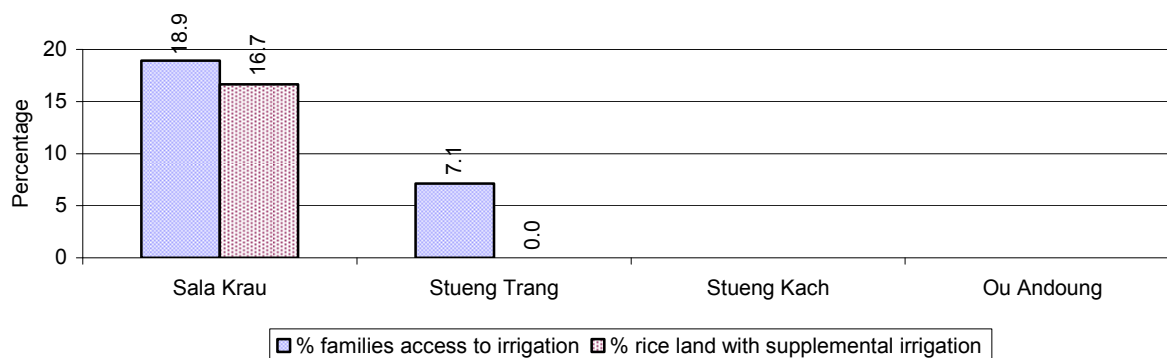
Description	2006 %	2007 %	2008	
			%	Number
Families who have access to irrigation water	18%	14%	13%	136 families
Families who have irrigation wells	0%	0%	1%	7 families

**Note:** Calculated against the total number of families are rice farmers

### 2.5.9 Number of Irrigation Wells over 3 years

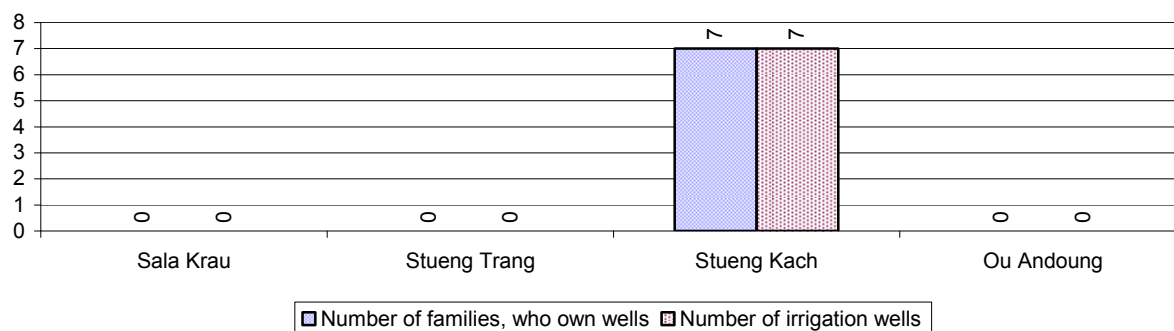
Description	2006	2007	2008
Number of irrigation wells	0 wells	0 wells	7 wells

### 2.5.10 Percentage of Families with access to (supplemental) Irrigation for wet Season Rice cultivation, by Commune, in 2008



**Note:** % of families, with access to irrigation is calculated against the total number of families, whose main occupation is rice farming. Irrigated wet rice land area is calculated against the total actual wet rice land cultivated areas

### 2.5.11 Irrigation Wells, by Commune, in 2008

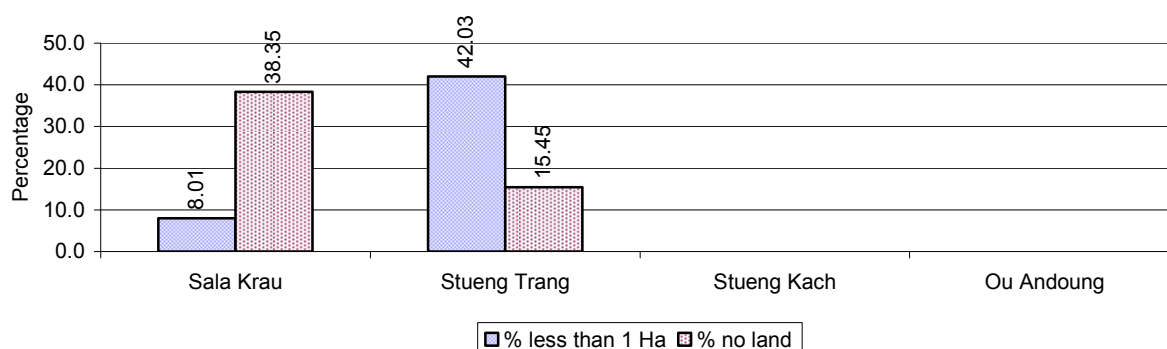


### 2.5.12 Farmers owning less than one hectare of Rice Land

Description	2006	2007	2008	
	%	%	%	Number
Families who have less than one hectare of rice land	10%	21%	28%	286 families
Families who do not own any rice land	0%	14%	25%	251 families

**Note:** Calculated on basis of total number of families who are rice farming

### 2.5.13 Percentage of Farmers with less than one Hectare or no Rice Land, by Commune, in 2008

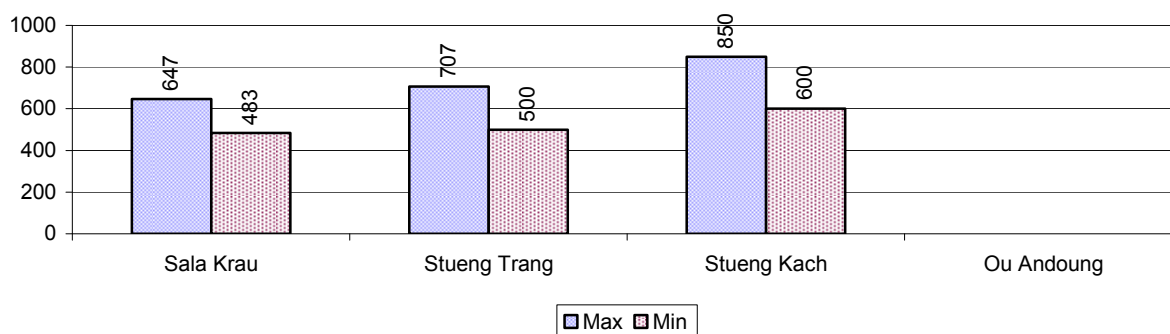


**Note:** Calculated on basis of total number of families who are rice farming

### 2.5.14 Average farm-gate Prices of Rice, over 3 years

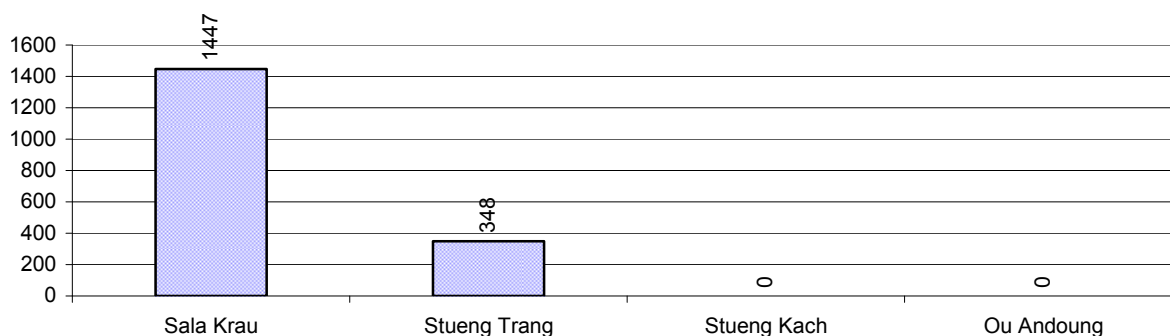
Description	2006	2007	2008
Maximum average farm gate price	547 Riels/Kg	638 Riels/Kg	734 Riels/Kg
Minimum average farm gate price	417 Riels/Kg	519 Riels/Kg	528 Riels/Kg
Average farm gate price	482 Riels/Kg	578 Riels/Kg	631 Riels/Kg
Average rice production per person	43 Kg/person	3 Kg/person	357 Kg/person

### 2.5.15 Minimum and maximum farm-gate Prices of Rice in Riel/kg, by Commune, in 2008



### 2.5.16 Production of Paddy in Kgs/Person, by Commune, in 2008

This table shows how much paddy (harvested rice) is produced in a year in a commune, in kgs per person.

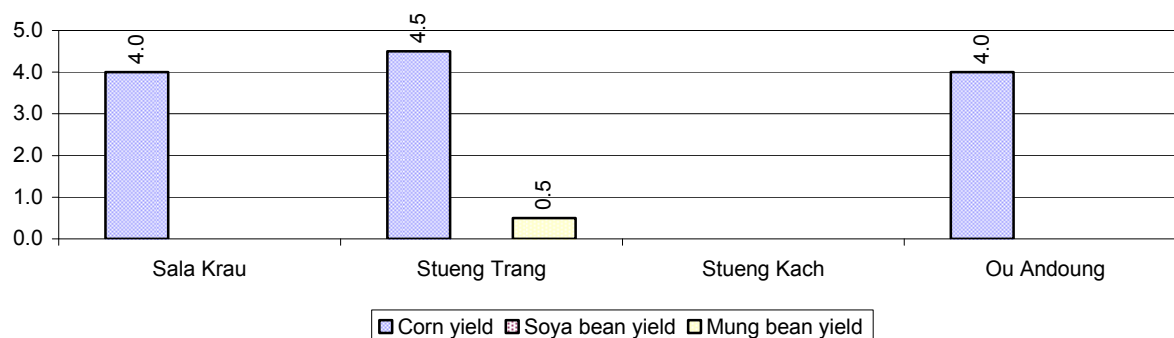


### 2.5.17 Production of other Crops, over 3 years

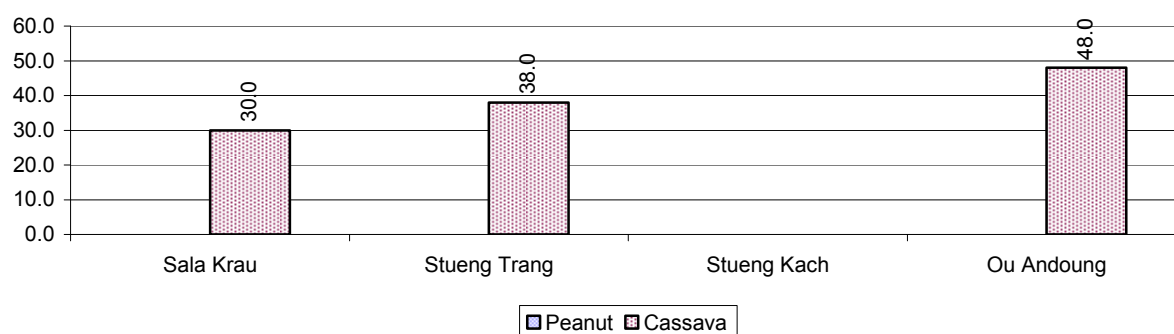
Crops	2006	2007	2008
Corn cultivation area	17,782 ha	13,560 ha	8,153 ha
Estimated corn yield	4.4 tonne(s)/ha	4.7 tonne(s)/ha	4.2 tonne(s)/ha
Estimated corn production	77,796 tonne(s)	63,280 tonne(s)	33,971 tonne(s)
Soya bean cultivation area	160 ha	244 ha	0 ha
Estimated Soya bean yield	2.8 tonne(s)/ha	2.1 tonne(s)/ha	- tonne(s)/ha
Estimated Soya bean production	453 tonne(s)	512 tonne(s)	- tonne(s)
Mungbean cultivation area	449 ha	351 ha	72 ha
Estimated Mungbean yield	2.2 tonne(s)/ha	2.4 tonne(s)/ha	0.5 tonne(s)/ha
Estimated Mungbean production	1,003 tonne(s)	825 tonne(s)	36 tonne(s)
Peanut cultivation area	50 ha	0 ha	0 ha
Estimated Peanut yield	3.0 tonne(s)/ha	- tonne(s)/ha	- tonne(s)/ha
Estimated Peanut production	150 tonne(s)	- tonne(s)	- tonne(s)
Cassava cultivation area	2,338 ha	5,701 ha	5,814 ha
Estimated Cassava yield	16.5 tonne(s)/ha	29.3 tonne(s)/ha	38.7 tonne(s)/ha
Estimated Cassava production	38,577 tonne(s)	167,229 tonne(s)	224,808 tonne(s)
Sweet potatoes cultivation area	0 ha	0 ha	0 ha

Crops	2006	2007	2008
Estimated Sweet potatoes yield	- tonne(s)/ha	- tonne(s)/ha	- tonne(s)/ha
Estimated Sweet potatoes production	- tonne(s)	- tonne(s)	- tonne(s)
Sesame cultivation area	3,921 ha	2,713 ha	15 ha
Estimated Sesame yield	1.5 tonne(s)/ha	1.7 tonne(s)/ha	0.7 tonne(s)/ha
Estimated Sesame production	5,685 tonne(s)	4,522 tonne(s)	11 tonne(s)

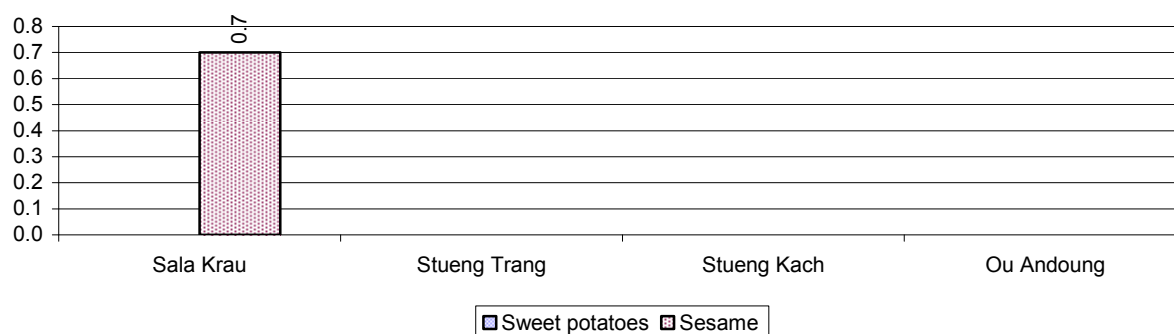
### 2.5.18 Yields of Corn, Soya beans and Mungbeans in tonne(s)/ha, by Commune, in 2008



### 2.5.19 Yields of Peanuts and Cassava in tonne(s)/ha by Commune, in 2008



### 2.5.20 Yields of Sweet Potatoes and Sesame in tonne(s)/ha, by Commune, in 2008



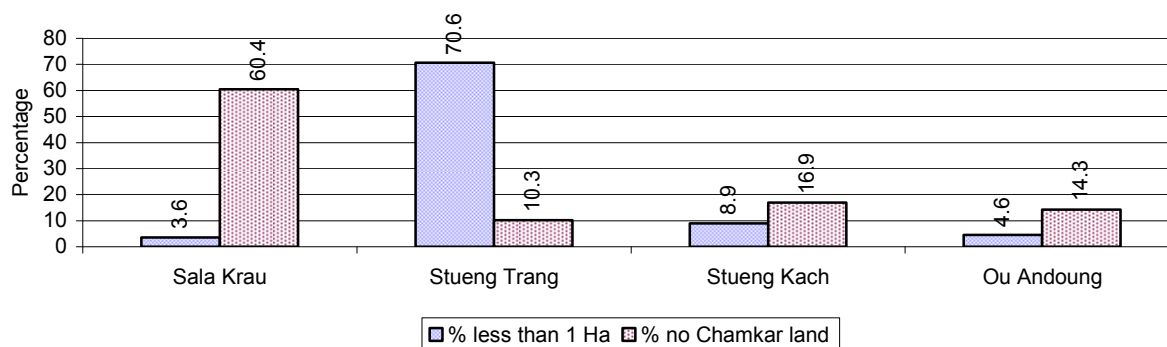
### 2.5.21 Percentage Farmers who own less than 1 Ha or no Chamkar land

Description	2006 %	2007 %	2008	
			%	Number
Families, who own less than 1ha of Chamkar land	15%	13%	23%	676 families
Families, with no Chamkar land	7%	20%	18%	537 families

**Note 1:** Calculated as a percentage of the total number of families whose main occupation is Chamkar (not rice) farming

**Note 2:** Chamkar land is no-rice land, i.e. other crops

### 2.5.22 Percentage Farmers owning less than 1 ha or no Chamkar land, by Commune, in 2008



**Note:** Percentage is calculated among families, who Chamkar farm as a main occupation, not the total population of the commune.

### 2.5.23 Percentage of Families raising Cattle/Buffalo, over 3 years

Description	2006 %	2007 %	2008	
			%	Number
Families raising cattle/buffalo	11%	12%	11%	672 families
Families raising cattle/buffalo as labor forces	2%	3%	2%	128 families

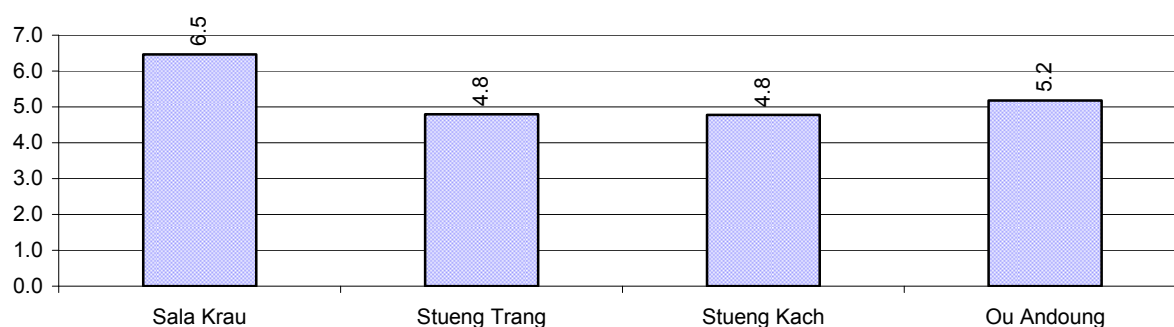
**Note:** Calculated against the total number of families.

### 2.5.24 Number of Cattle/buffalo being raised, over 3 years

Description	2006	2007	2008
Total number of cattle/buffalo	2,443 head(s)	2,852 head(s)	3,467 head(s)
Average cattle/buffalo per families	3.7 head(s)/families	4.0 head(s)/families	5 head(s)/families

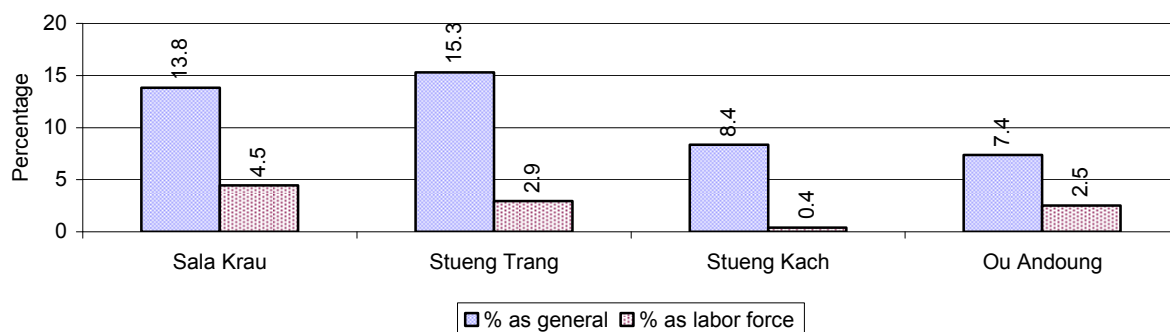
**Note:** Calculated by dividing total number of cattle/buffalo by total number of cattle/buffalo raising families

### 2.5.25 Average number of Cattle/Buffalo per Family, by Commune, in 2008



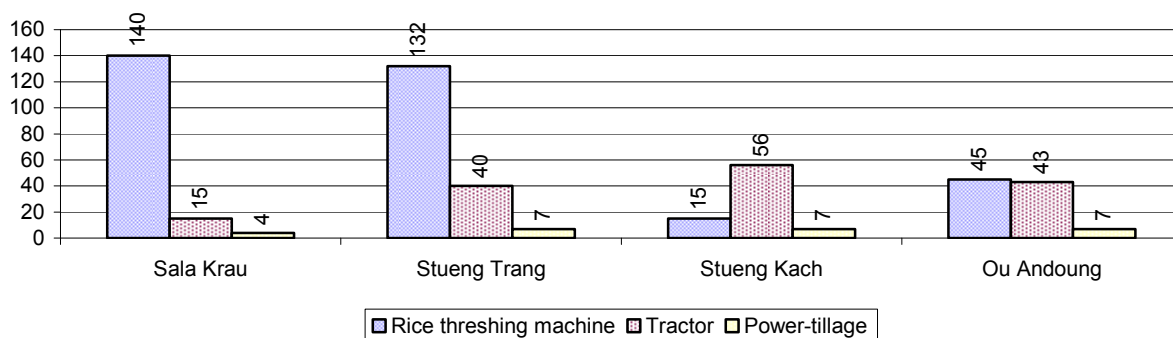
**Note:** Calculated by dividing total number of cattle/buffalo by total number of cattle/buffalo raising families

### 2.5.26 Percentage Families raising Cattle/Buffalo, for general and labor purposes in 2008, by Commune



**Note:** Calculated using the total number of families raising cattle/buffalo against the total number of families.

### 2.5.27 Type and number of agricultural Machines, by Commune, in 2008



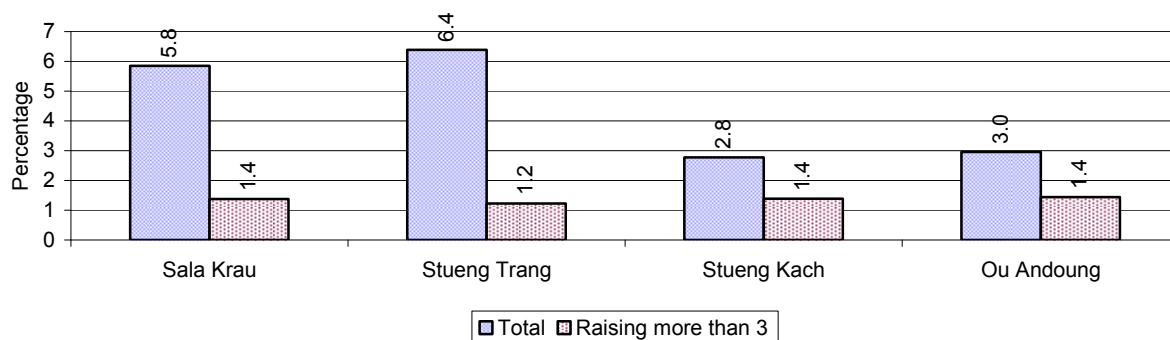
### 2.5.28 Livestock-producing Households over 3 years

Description	2006 %	2007 %	2008	
			%	Number
Total number of families raising pigs	8%	7%	4%	262 families
number of families raising more than 3 pigs	2%	2%	1%	84 families
Total number of families raising chickens	72%	69%	60%	3,727 families
number of families raising more than 3 chickens	57%	58%	53%	3,266 families
Total number of families raising ducks	4%	5%	5%	321 families
number of families raising more than 5 ducks	3%	4%	4%	253 families
Total number of families raising goats or sheep	0%	0%	0%	18 families
Total number of families raising horses	0%	0%	0%	2 families

**Note:** Calculated against the total number of families

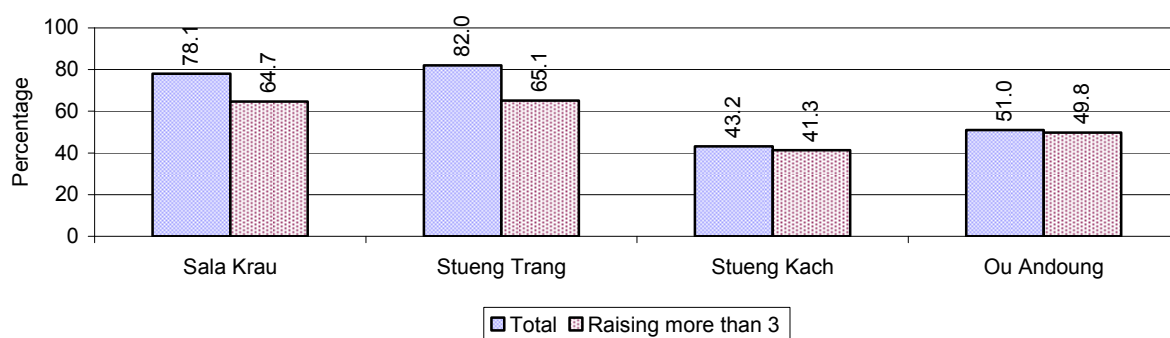


### 2.5.29 Percentage Families raising Pigs, by Commune, in 2008



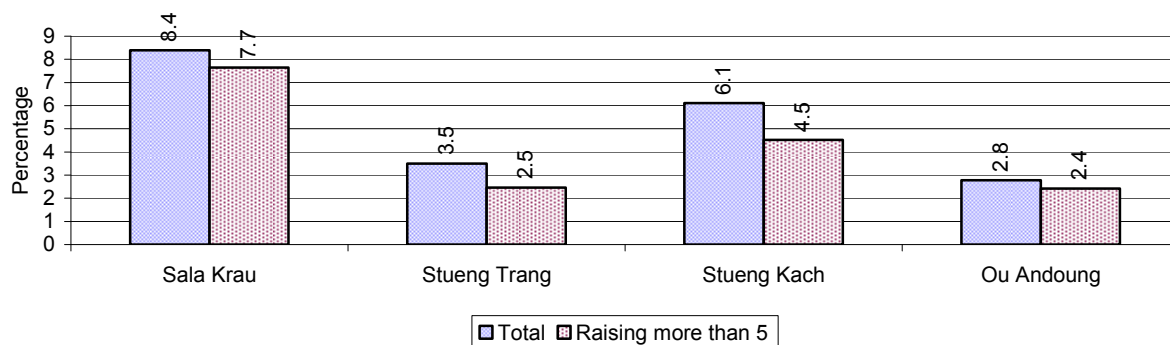
**Note:** Calculated against the total number of families in the commune

### 2.5.30 Percentage Families raising Chickens, by Commune, in 2008



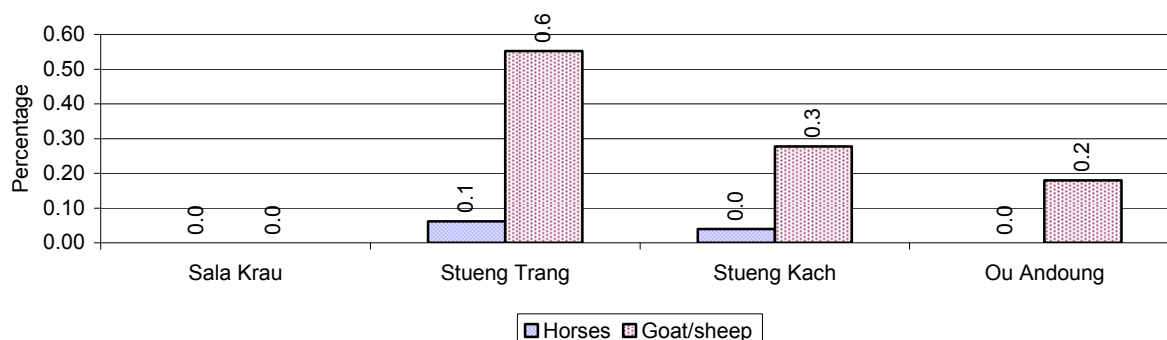
**Note:** Calculated against the total number of families in the commune

### 2.5.31 Percentage Families raising Ducks, by Commune, in 2008



**Note:** Calculated against the total number of families in the commune

### 2.5.32 Percentage Families raising Horses, Goats or Sheep, by Commune, in 2008



**Note:** Calculated against the total number of families in the commune

### 2.5.33 Livestock Farms over 3 years

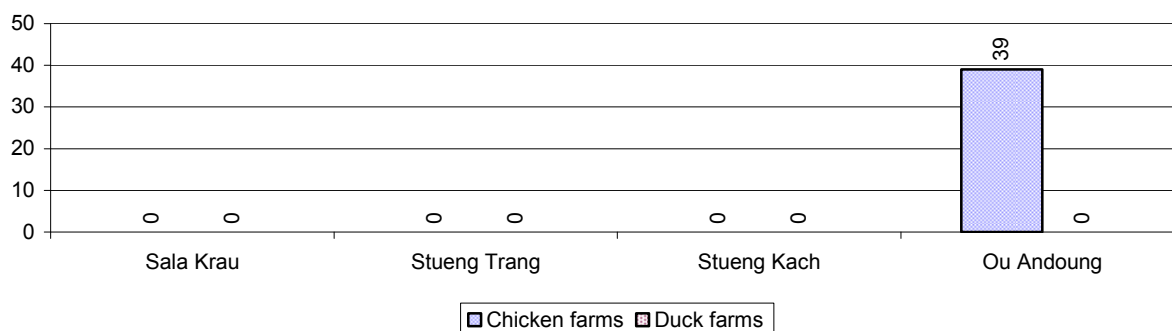
Description	2006	2007	2008
Number of cattle/buffalo farms	0 farm(s)	0 farm(s)	0 farm(s)
Number of pig farms	1 farm(s)	1 farm(s)	0 farm(s)
Number of goat/sheep farms	1 farm(s)	1 farm(s)	0 farm(s)
Number of chicken farms	0 farm(s)	0 farm(s)	39 farm(s)
Number of duck farms	1 farm(s)	0 farm(s)	0 farm(s)

### 2.5.34 Number Livestock Farms, by Commune in 2008

There were no farms of this type in this District in 2008

**Note:** Number of farms are recorded by the village chief, not by counting number of livestock in each farm

### 2.5.35 Number Chicken and Duck Farms, by Commune, for 2008



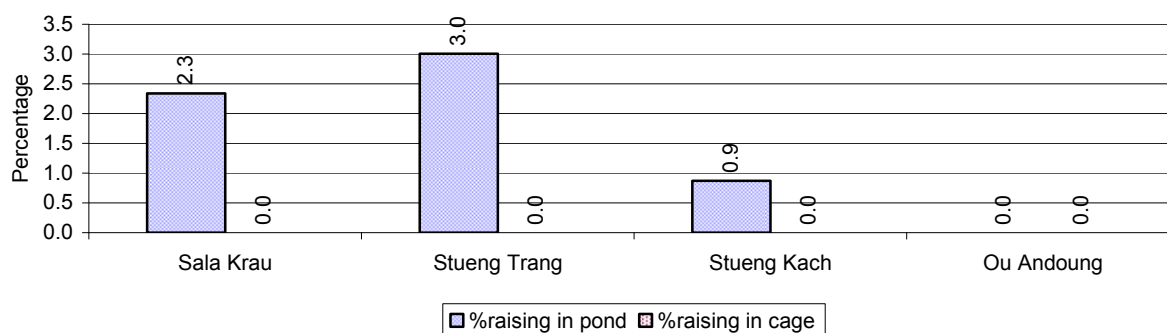
**Note:** Number of farm places recorded by village chief, not by counting number of livestock in each farm

### 2.5.36 Families raising Fish over 3 years

Description	2006	2007	2008
Total number of families raising fish	25 families	34 families	93 families
% families raising fish	0%	1%	1%
Number families raising fish in pond	25 families	34 families	93 families
% families raising fish in pond	0%	1 %	1%
Number fish pond	24 pond(s)	34 pond(s)	93 pond(s)
No. of ponds per family	1.0 pond/families	1.0 pond/families	1.0 pond/families
Number of families raising fish in cage	0 families	0 families	0 families
%families raising fish in cage	0 %	0 %	0%
Number of fish cage	0 cage(s)	0 cage(s)	0 cage(s)
No. of fish cage per family	- cage /families	- cage /families	- cage /families

**Note:** % of families raising fish or fish in ponds or cages is calculated a percentage of the total number of families.

### 2.5.37 Percentage of Families raising Fish, by Commune, in 2008



**Note:** Calculated as a percentage of the total number of families in the commune.

### 2.5.38 Shrimp and Prawn Farming over 3 years

Description	2006	2007	2008
Number of families raising shrimps	0 families	0 families	0 families
% Families raising shrimps	0%	0%	0%
Number of shrimp ponds	0 pond	0 pond	0 pond
Total area raising shrimps	0 ha	0 ha	0 ha
Area per family	-ha/families	-ha/families	-ha/families
Number of families raising prawns	0 families	0 families	0 families
% families raising prawns	0%	0%	0%
Number prawn ponds	0 pond	0 pond	0 pond
Ponds per families	- pond/families	-pond/families	-pond/families
Number of prawn cages	0 cage	0 cage	0 cage
Cages per families	0 cage /families	0 cage /families	0 cage /families

**Note:** Percentage of families raising either prawns or shrimp is calculated against the number of families, who do aquaculture farming, NOT the total population.

### 2.5.39 Numbers of Families raising Shrimps and number of Shrimp Ponds, by Commune, in 2008

There were none of these in this District in 2008

### 2.5.40 Number of Families raising Prawn and Number of Prawn Ponds/Cages, by Commune, in 2008

There were none of these in this District in 2008

### 3 Social Aspects

#### 3.1 Education

##### 3.1.1 Kindergarten in the District over 3 years

Description	2006	2007	2008
Number of community kindergarten schools	0 school(s)	0 school(s)	0 school(s)
Number of community kindergarten class rooms	0 room(s)	0 room(s)	0 room(s)
Number of community kindergarten classes	0 class(es)	0 class(es)	0 class(es)
Number of community kindergarten teachers	0 person(s)	0 person(s)	0 person(s)
Number of women community kindergarten teachers	0 women	0 women	0 women
Number of state and private kindergarten schools	1 school(s)	1 school(s)	1 school(s)
Number of state and private kindergarten class rooms	1 room(s)	1 room(s)	1 room(s)
Number of state and private kindergarten classes	1 class(es)	1 class(es)	1 class(es)
Number of state and private kindergarten teachers	1 person(s)	1 person(s)	1 person(s)
Number of women state and private kindergarten teachers	1 women	1 women	1 women

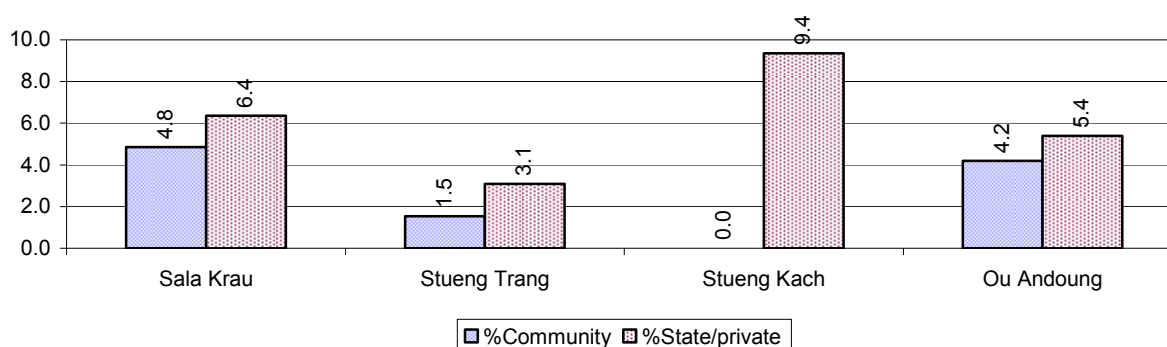
##### 3.1.2 Percentage enrolment at Kindergarten level over 3 years

*This table shows the percentage of the total 3-5 year old population attending kindergarten.*

Description	2006 %	2007 %	2008	
			%	Number
Total percentage of children, 3-5 yrs, go to kindergarten	9%	6%	8%	199 person(s)
Percentage of children, 3-5 yrs, go community kindergarten	4%	4%	2%	49 person(s)
Percentage children, 3-5 yrs, go state/private kindergarten	5%	3%	6%	150 person(s)

**Note:** Calculated against the total for that age group

##### 3.1.3 Percentage of Children 3-5 yrs attending Kindergarten, by Commune, in 2008



##### 3.1.4 Basic Education over 3 years

###### Primary School

Description	2006	2007	2008
Number of primary schools	18 school(s)	12 school(s)	22 school(s)
Number of primary school rooms	75 room(s)	62 room(s)	103 room(s)
Number of primary classes	109 class(es)	98 class(es)	138 class(es)

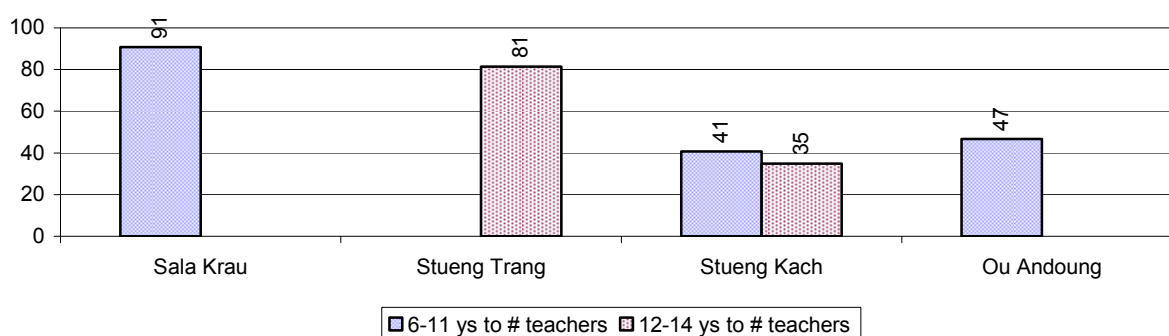
Description	2006	2007	2008
Number of primary teachers	58 person(s)	68 person(s)	59 person(s)
Ratio of children 6-11 yrs to school	286	361	192
Ratio of children 6-11 yrs to school room	69	70	41
Ratio of children 6-11 yrs to class	47	44	31
Ratio of children 6-11 yrs to teacher	89	64	72

**Note:** According to education norm, children 6-11 yrs should attend primary school, while 12-14 yrs should be in lower secondary school, but in reality this varies.

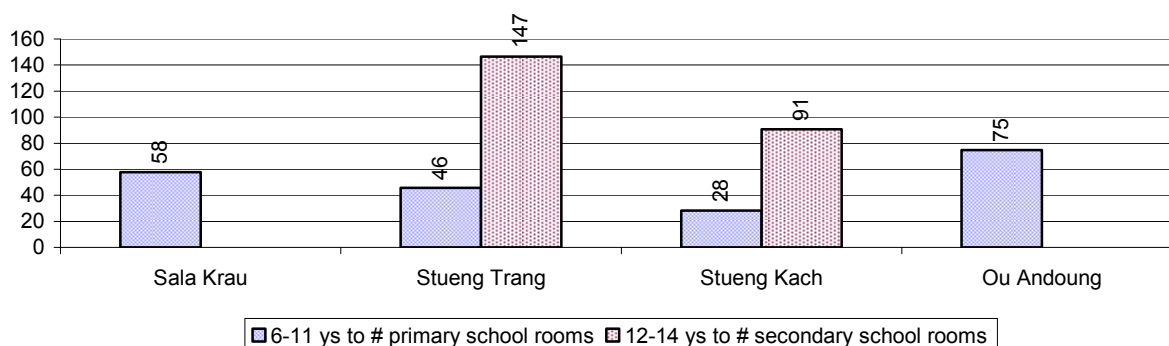
### Lower Secondary School

Description	2006	2007	2008
Number of lower secondary schools	3 school(s)	3 school(s)	3 school(s)
Number of lower secondary school rooms	6 room(s)	6 room(s)	15 room(s)
Number of lower secondary classes	12 class(es)	12 class(es)	13 class(es)
Number of lower secondary teachers	20 person(s)	20 person(s)	35 person(s)
Ratio children 12-14 yrs to school	836	883	814
Ratio of children 12-14 yrs to school room	418	442	163
Ratio of children 12-14 yrs to class	209	221	188
Ratio of children 12-14 yrs to teacher	125	133	70

### 3.1.5 Ratio of 6-11 year old and 12-14 year old Children to number of Teachers, by Commune, in 2008



### 3.1.6 Ratio of 6-11 year old and 12-14 year old Children to number of School Rooms, by Commune, in 2008



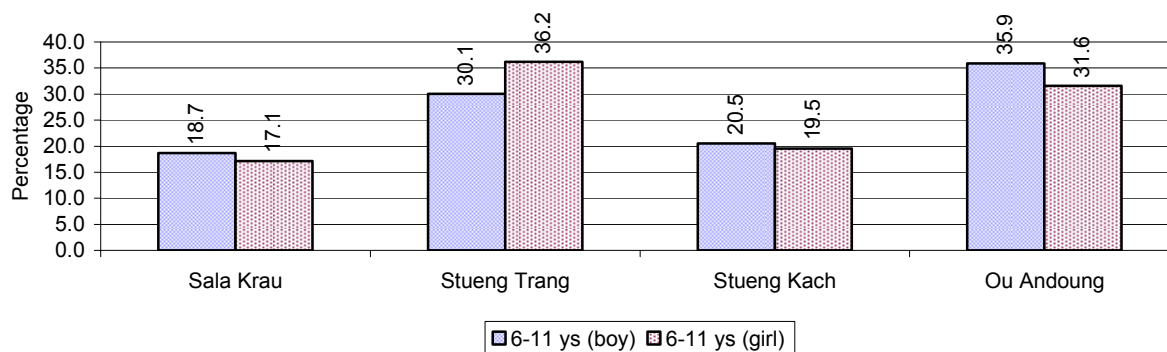
### 3.1.7 Enrolment status at Primary Level over 3 years

Description	2006 %	2007 %	2008	
			%	Number
Total children aged 6-11 years old	17%	14%	14%	4,221 person(s)
Total children aged 6-11 who are in school	77%	69%	74%	3,111 person(s)
Total children aged 6-11 who are not in school	23%	31%	26%	1,110 person(s)
Total girls aged 6-11 years old	17%	14%	13%	1,974 person(s)
Total girls aged 6-11 who are in school	79%	69%	73%	1,450 person(s)
Total girls aged 6-11 who are not in school	21%	31%	27%	524 person(s)
Total boys aged 6-11 years old	17%	15%	15%	2,247 person(s)
Total boys aged 6-11 who are in school	75%	69%	74%	1,661 person(s)
Total boys aged 6-11 who are not in school	25%	31%	26%	586 person(s)

**Note 1:** Percentage is calculated on the basis of the total number of children within 6-11 year age group for the first 3 rows and for the total girls and the total boys aged 6-11 yrs.

**Note 2:** Number of girls aged 6-11 who are in & not in school is calculated against the total number of girls aged 6-11 yrs. Number boys, 6-11 yrs who are in & not in school are calculated against the total number of boys aged 6-11 yrs.

### 3.1.8 Percentage of 6-11 year old Children not in School, by Commune, in 2008



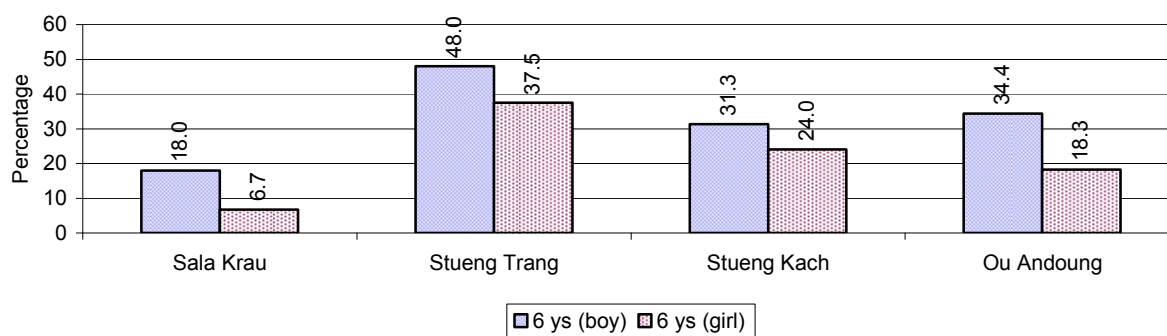
**Note:** calculated on the basis of the total number of children within 6-11 year age group in the commune.

### 3.1.9 Enrolment of 6 year old Children over 3 years

Description	2006 %	2007 %	2008	
			%	Number
Total % and number of children aged 6 years old	6%	5%	3%	1,058 person(s)
Total % of children aged 6 years old in school	70%	58%	63%	666 person(s)
Total % of children aged 6 years old not in school	30%	42%	37%	392 person(s)

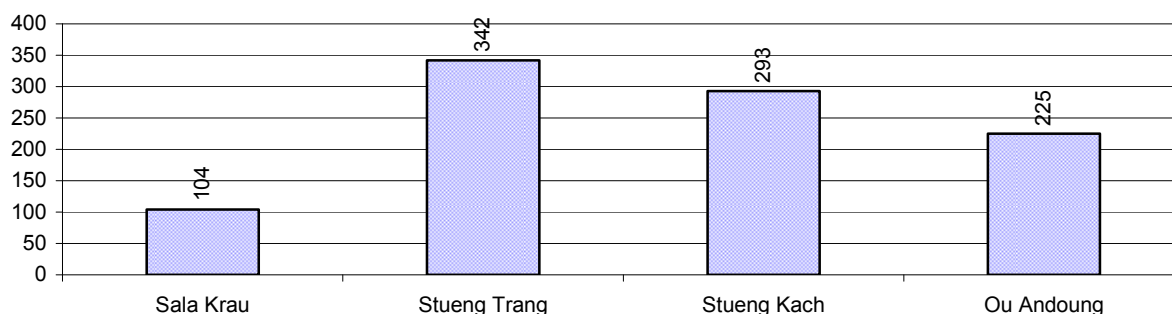
**Note:** First row calculated as a percentage of total population. Second and third row calculated as a percentage of the total number of 6 year olds.

### 3.1.10 Percentage of 6 year old Children not in School, by Commune, in 2008



**Note:** Calculated as a percentage of total 6 year old population

### 3.1.11 Number of 5 year old Children in each Commune in 2008

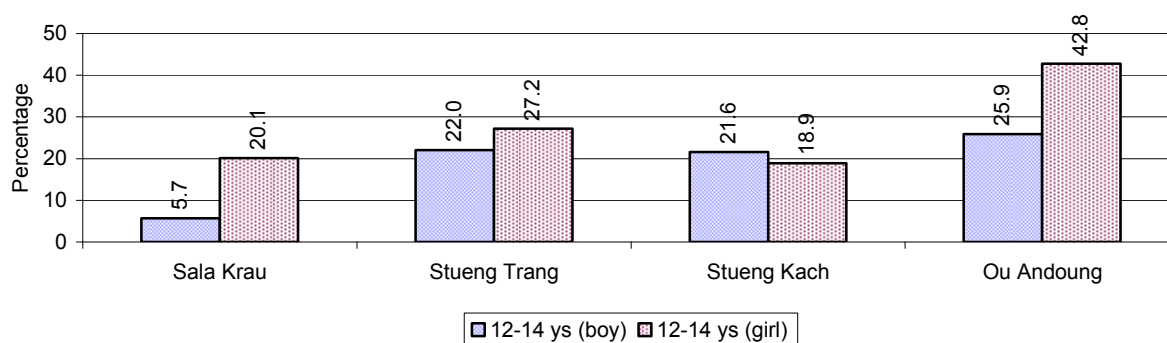


### 3.1.12 Enrolment at Lower Secondary Level over 3 years

Description	2006 %	2007 %	2008	
			%	Number
Total <b>children</b> aged 12-14 years old	8%	9%	8%	2,441 person(s)
Children aged 12-14 years old in school	77%	70%	76%	1,860 person(s)
Children aged 12-14 years old not in school	23%	30%	24%	581 person(s)
Total <b>girls</b> aged 12-14 years old	8%	9%	8%	1,202 person(s)
Girls aged 12-14 years old in school	77%	66%	73%	876 person(s)
Girls aged 12-14 years old not in school	23%	34%	27%	326 person(s)
Total <b>boys</b> aged 12-14 years old	8%	8%	8%	1,239 person(s)
Boys aged 12-14 years old in school	77%	75%	79%	984 person(s)
Boys aged 12-14 years old not in school	23%	25%	21%	255 person(s)

**Note:** Percentage is calculated on the basis of number of the total number of children within 12-14 yrs group, except for the first row of each section which is calculated on the basis of the total population.

### 3.1.13 Percentage of 12-14 year olds not in School, by Commune, in 2008



**Note:** Calculated as a percentage of the total 12-14 year old population in each commune

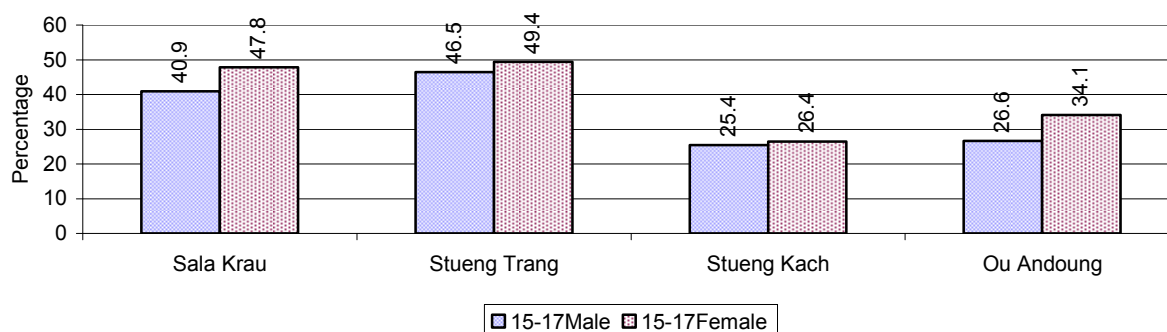
### 3.1.14 Upper Secondary Schools over 3 years

Description	2006	2007	2008
Number of upper secondary schools	0 school(s)	0 school(s)	1 school(s)
Number of upper secondary school rooms	0 room(s)	0 room(s)	15 room(s)
Number of upper secondary classes	0 class(es)	0 class(es)	15 class(es)
Number of upper secondary teachers	0 person(s)	0 person(s)	30 person(s)
Ratio of 15-17 yr olds to number of school	N/A	N/A	2,439
Ratio of 15-17 yr olds to number of school room	N/A	N/A	163
Ratio of 15-17 yr olds to number of classes	N/A	N/A	163
Ratio of 15-17 yr olds to number of teacher	N/A	N/A	81

### 3.1.15 Enrolment of 15-17 year old teenagers over 3 years

Description	2006	2007	2008
Number of teenage, 15-17 years old	2,779 person(s)	2,944 person(s)	2,439 person(s)
Number of teenage, 15-17 years old, who are not studying	1,130 person(s)	1,427 person(s)	864 person(s)
Percentage of teenage, 15-17 years old not studying	41%	48%	35%

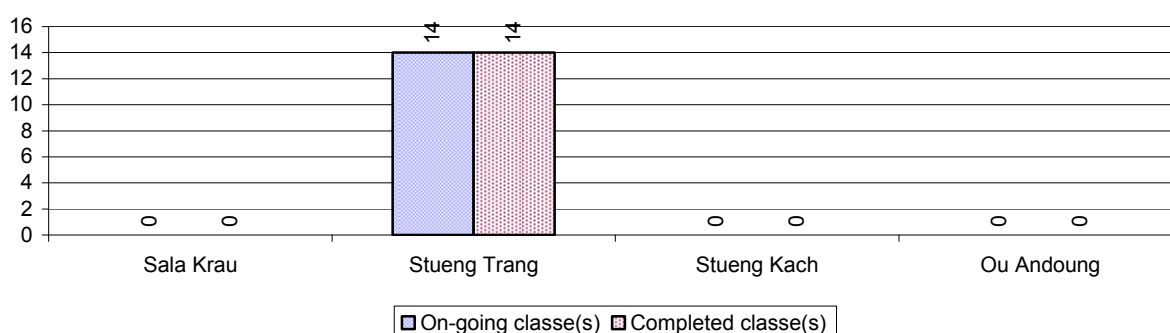
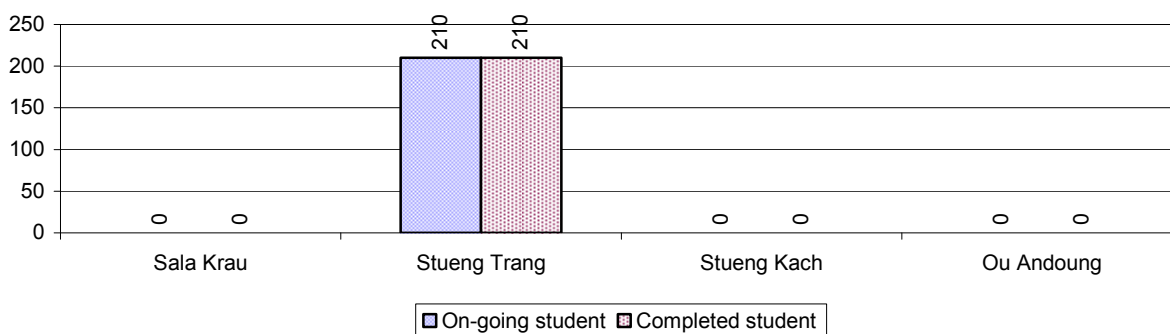
### 3.1.16 Percentage of 15-17 year old Teenagers not at School, by Commune, in 2008





**3.1.17 Literacy Classes as of 2008**

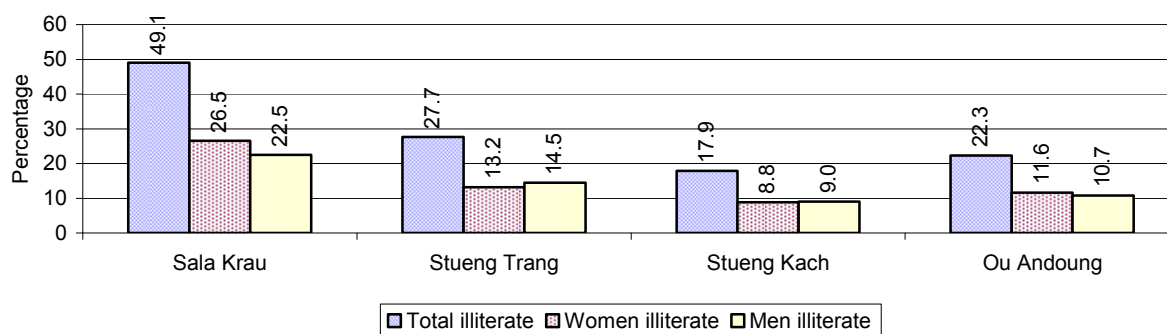
Literacy classes	Organized by:		Other Program(s)	Total
	PDoEYS	NGOs		
Number of On-going literacy classes	14 class(es)	0 class(es)	0 class(es)	14 class(es)
Number of literacy students in on-going classes	210 person(s)	0 person(s)	0 person(s)	210 person(s)
Completed literacy class(es)	14 classes	0 classes	0 classes	14 classes
Number of literacy students that have completed literacy classes	210 person(s)	0 person(s)	0 person(s)	210 person(s)
Number of students that passed	206 person(s)	0 person(s)	0 person(s)	206 person(s)

**3.1.18 Number of on-going and completed Literacy Classes, by Commune, in 2008****3.1.19 Students of on-going & completed Literacy Classes, by Commune, in 2008****3.1.20 Percentage of illiterate People between 15-60, over 3 years**

Illiteracy Status	2006 %	2007 %	2008	
			%	Number
Illiterate people, 15-60 years old	30%	29%	26%	4,712 person(s)
Illiterate females, 15-60 years old	16%	16%	13%	2,380 person(s)
Illiterate people, 15-17 years old	24%	23%	20%	483 person(s)
Illiterate females, 15-17 years old	12%	11%	10%	235 person(s)
Illiterate people, 18-24 years old	30%	26%	23%	1,048 person(s)
Illiterate females, 18-24 years old	17%	14%	11%	487 person(s)
Illiterate people, 25-60 years old	32%	31%	28%	3,181 person(s)
Illiterate females, 25-60 years old	16%	17%	15%	1,658 person(s)

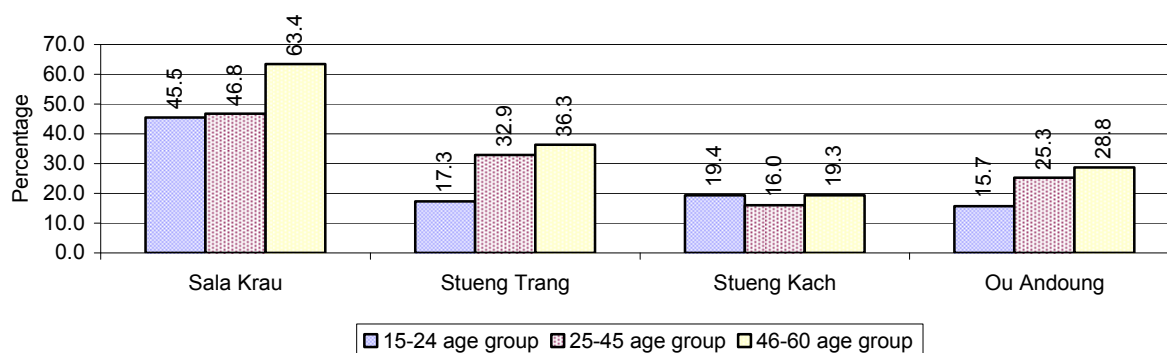
**Note:** Percentage is calculated on the basis of number of people in age each group.

### 3.1.21 Percentage illiterate People among 15-60 yrs old, by Commune, in 2008



**Note:** Percentages are calculated on the basis of number of people in that age group.

### 3.1.22 Percentage illiterate People for 15-24 yrs, 25-45 yrs and 46-60 yrs, by Commune, in 2008



**Note:** Percentage of illiterate people in each age group is calculated on the basis of number of people in that age group.

## 3.2 Health

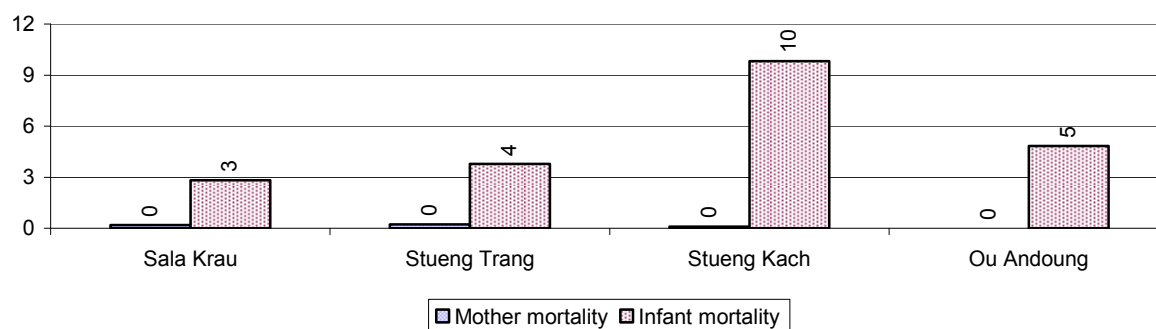
### 3.2.1 Health Situation of Women and Children, over 3 years

Description	2006	2007	2008
Number families with a birth during the year	583 families	467 families	556 families
Number of women who had their baby delivered by a TBA	295 person(s)	255 person(s)	222 person(s)
Percentage of women who had their baby delivered by a TBA	51 %	55 %	40 %
Number of women who had their baby delivered by a midwife	288 person(s)	212 person(s)	334 person(s)
Percentage of women had their baby delivered by a midwife	49 %	45 %	60 %
Number of mothers who died within 1 month of giving birth	1 person(s)	4 person(s)	4 person(s)
Mothers who died within 1 month of giving birth per 100,000 families having a delivery	172	857	719
Number of infants born during the year	583	467	566

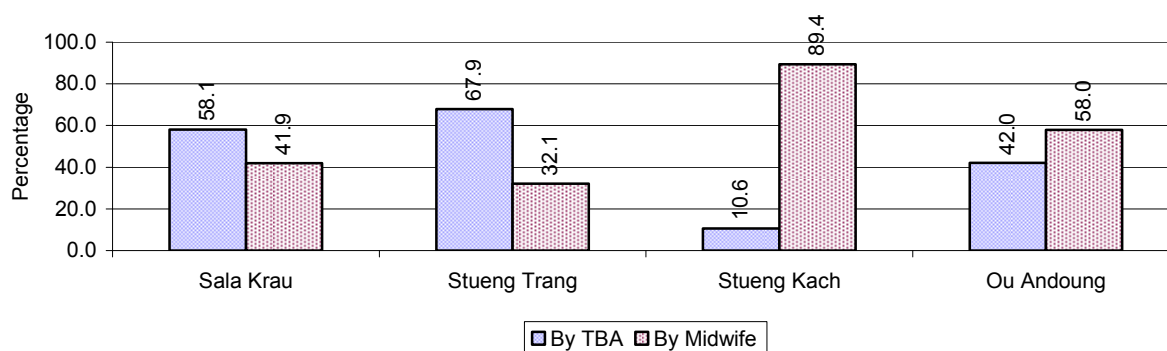
Description	2006	2007	2008
	person(s)	person(s)	person(s)
Number of Infants who died within 1 month	10 person(s)	8 person(s)	20 person(s)
Infants mortality within 1 month per 1,000 births	17	17	35
Number of children who died below the age of 5.	31 person(s)	80 person(s)	18 person(s)
Number of infants, aged 9-12 months, born during the year	369 person(s)	232 person(s)	351 person(s)
Nr. infants, aged 9-12 months, not receiving full immunization	87 person(s)	67 person(s)	38 person(s)
% of 9-12 months infants, not receiving full immunization	24 %	29 %	11 %

**Note:** TBA = Traditional Birth Attendant

### 3.2.2 Mothers dying within 0 days to 1 month of giving Birth and Infants dying within 1 month in 2008, by Commune

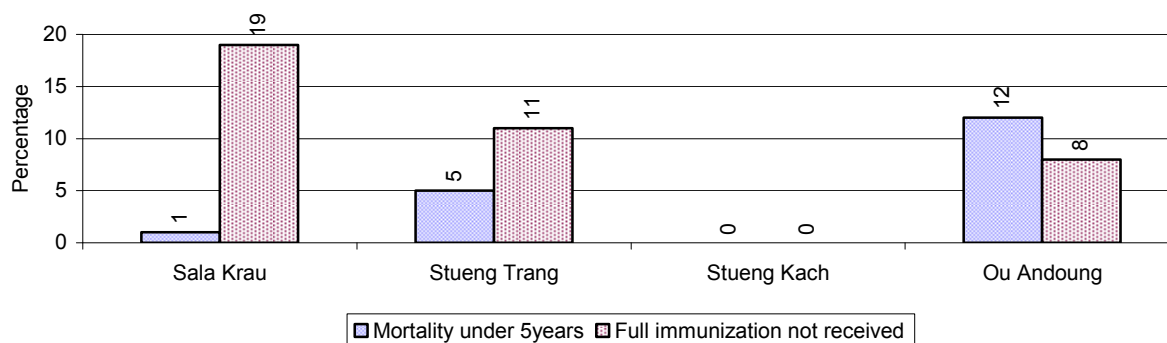


### 3.2.3 Percentage of Women delivering with a TBA or Midwife, by Commune



**Note:** Calculated as a percentage of total deliveries

### 3.2.4 Percentage of Children dying below 5 & of 9-12 months not receiving full Immunization, by Commune, in 2008



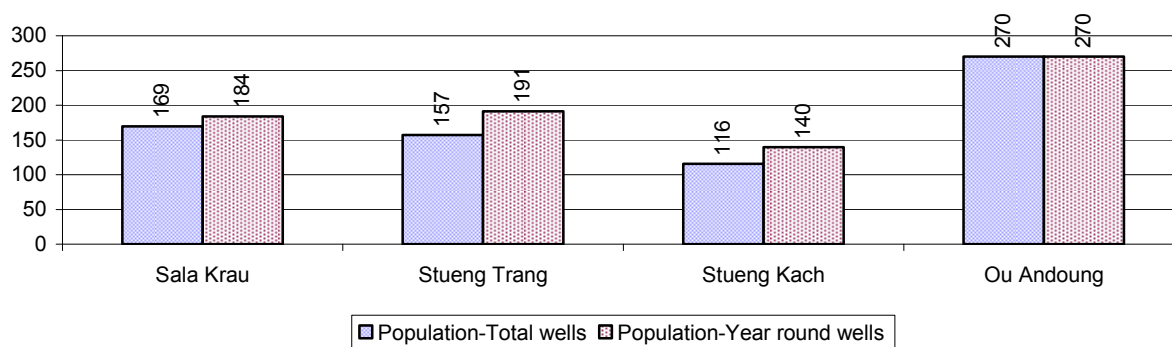
**Note:** Mortality rate calculated as a percentage of the total 5 year old population. Lack of immunization received calculated as a percentage of the total number 9-12 months olds there are

## 3.3 Water and Sanitation

### 3.3.1 Number of different types of Wells over 3 years

Type of wells	Number of wells by year		
	2006	2007	2008
<i>Total number of pumped or mixed wells</i>	153	213	170
Year-round usable pumped or mixed wells	137	197	144
Dry season unusable pump or mixed wells	16	16	26
Pump or mixed wells needing repair/rehabilitation	20	79	33
<i>Total number of ring wells</i>	27	34	36
Year-round usable ring wells	24	28	32
Dry season unusable ring wells	3	6	4
Ring wells needing repair/rehabilitation	4	6	6
<i>Total number of unprotected dug wells</i>	29	28	38
Year-round usable unprotected dug wells	24	24	24
Dry season unusable unprotected dug wells	5	4	14

### 3.3.2 Ratio of People to Wells, by Commune, in 2008

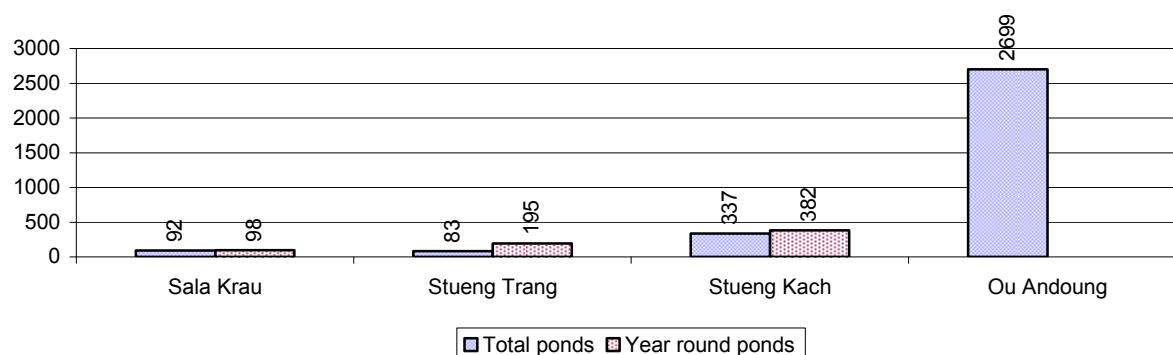


**Note:** Year-round wells excluding unprotected wells

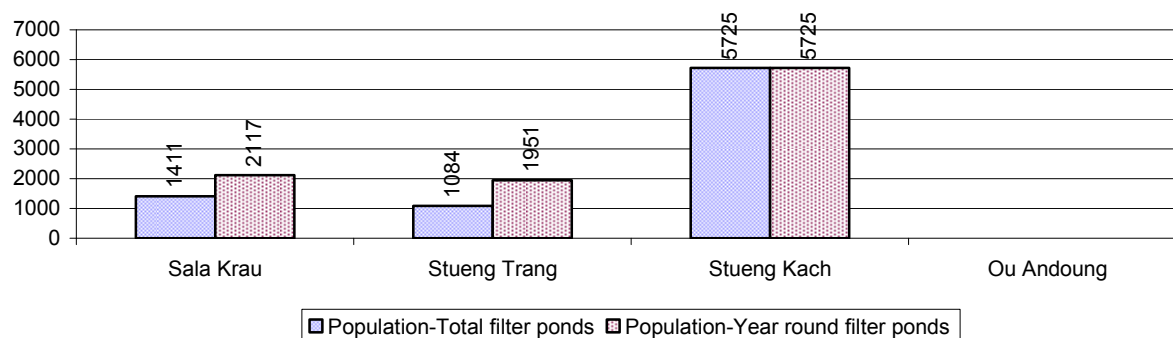
### 3.3.3 Potable Ponds over 3 years

Type of Pond	2006	2007	2008
<i>Total number of normal-type ponds</i>	154 pond	197 pond	200 pond
Year-round usable normal-type ponds	59 pond	90 pond	123 pond
Dry season unusable normal-type ponds	95 pond	107 pond	77 pond
Normal-type ponds needing repair/rehabilitation	34 pond	118 pond	75 pond
<i>Total number of filter ponds</i>	10 pond	9 pond	14 pond
Year-round usable filter ponds	8 pond	6 pond	9 pond
Filter ponds, dry season unusable	2 pond	3 pond	5 pond
Filter ponds needing repair/rehabilitate	4 pond	7 pond	7 pond

### 3.3.4 Ratio of People to normal Ponds, by Commune in 2008



### 3.3.5 Ratio of People to Filter Ponds, by Commune, in 2008

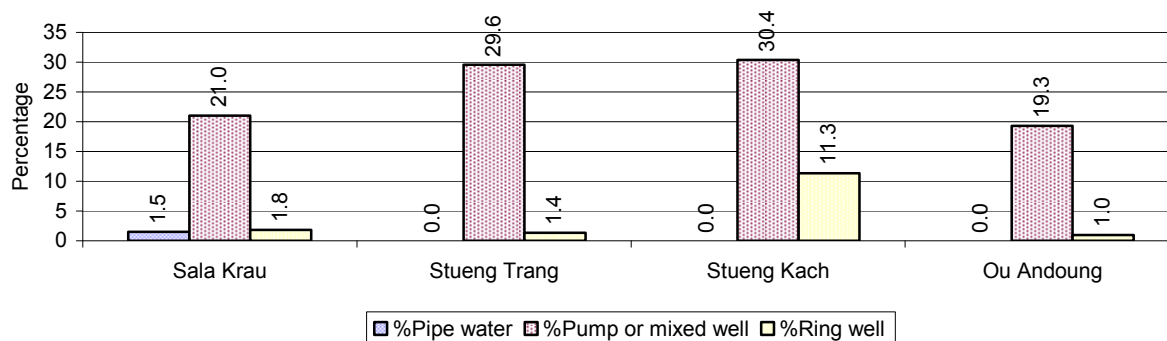


### 3.3.6 Source of potable Water for Households, over 3 years

Water sources	2006 %	2007 %	2008	
			%	Number
Families using water from purification system	3%	0 %	0 %	14 families
Families using water from pump, mixed wells	37%	37 %	27 %	1,661 families
Families using water from ring wells and open dug wells	5%	5 %	5 %	336 families
Families using water from pond	17%	13 %	18 %	1,127 families
Families using water from rain water storage	3%	2 %	2 %	132 families
Families using water from rivers, lakes, natural ponds and reservoirs	35%	43 %	47 %	2,935 families

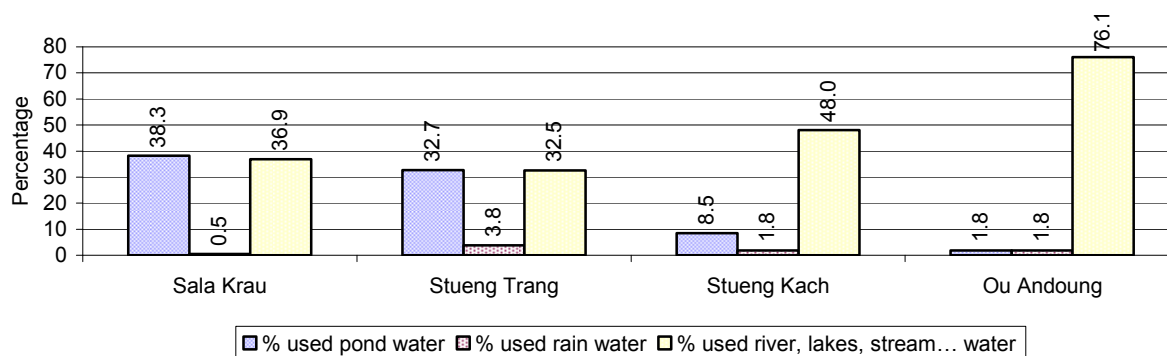
**Note:** Calculated as a percentage of the total number of families.

### 3.3.7 Percentage Families using different Water Sources, by Commune, in 2008



**Note:** Calculated as a percentage of the total number of families in each commune

### 3.3.8 Percentage Families using Water from Rain Water Storage, Ponds and natural Sources (rivers/lakes/natural ponds/reservoirs), by Commune, 2008



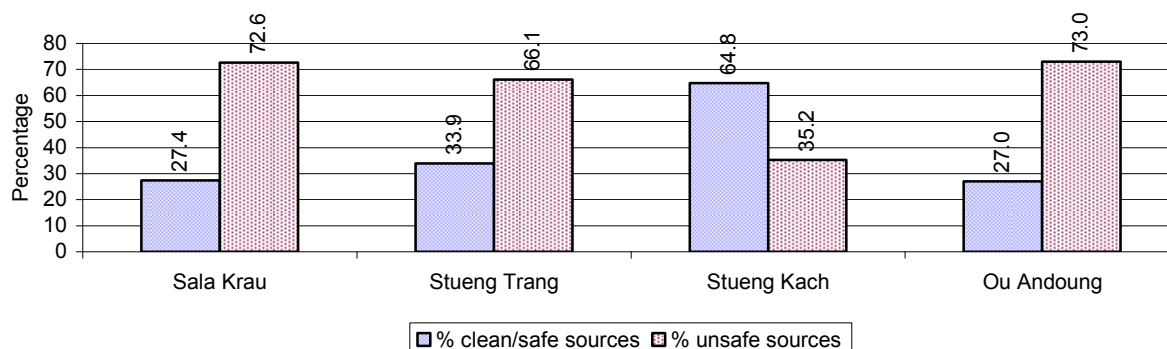
**Note:** Calculated as a percentage of the total number of families in each commune

### 3.3.9 Drinking Water Sources in the dry Season over 3 years

Percentage Families that get drinking water from:	2006	2007	2008	
	%	%	%	Number
from clean/safe sources	50 %	53 %	44 %	2,744 families
from unsafe sources	50 %	47 %	56 %	3,461 families

**Note:** Calculated as a percentage of the total number of families.

### 3.3.10 Percentage Families using safe and unsafe Water Sources in the dry Season, by Commune, in 2008



**Note:** Calculated as a percentage of the total number of families in each commune.

### 3.3.11 Drinking Water Purification by Households, over 3 years

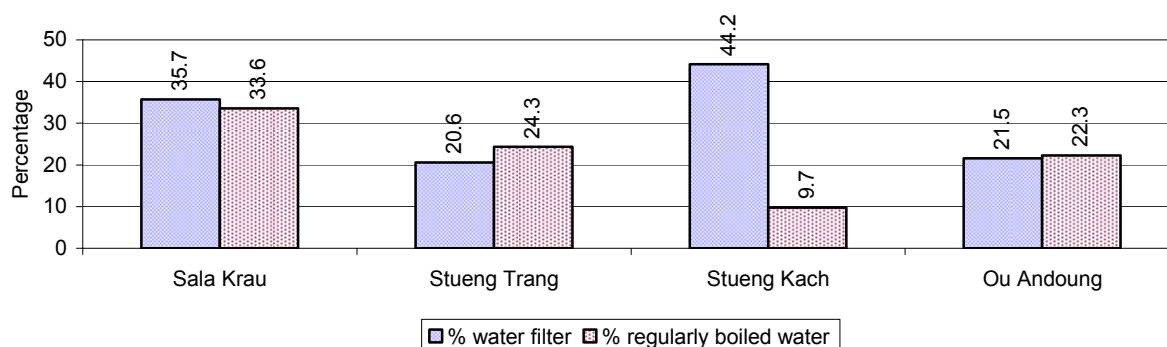
This table shows the different ways families make water safe for drinking.

Families, who:	2006	2007	2008	
	%	%	%	Number
Filter water for drinking	53%	46%	33 %	2,025 families
Boil water for drinking	19%	18%	19 %	1,205 families

**Note:** Calculated as a percentage of the total number of families

### 3.3.12 Percentage Families filtering Water or regularly boiling Water, by Commune, in 2008

This graph shows the different ways families make drinking water safe.



**Note:** Calculated on as a percentage of the total number of families in each commune.

### 3.3.13 Families' access to Water, over 3 years

Families access to water	2006	2007	2008	
	%	%	%	Number
Families with water at home or in less than 150m	28%	24%	35 %	2,197 families
Families with water 150m or more away from home	26%	25%	19 %	1,192 families

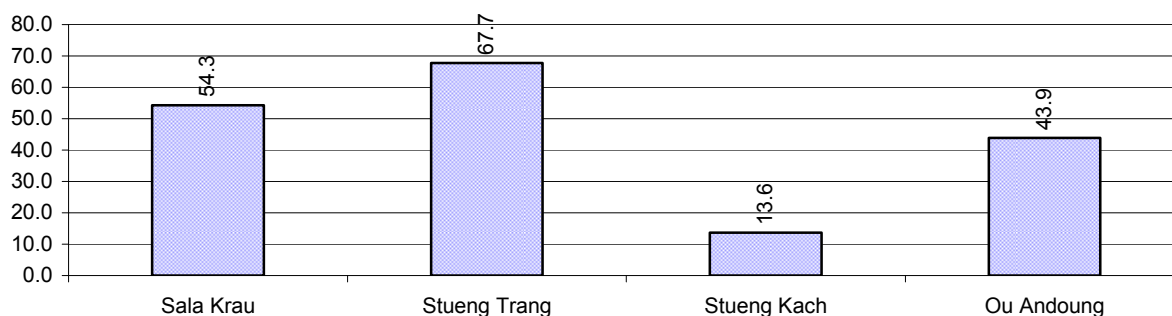
**Note:** Calculated as a percentage of the total number of families

### 3.3.14 Ratio of people to Latrines over 3 years

Description	2006	2007	2008	
	Ratio	Ratio	Ratio	Number
Ratio of people to latrines	35.3	33.4	26.0	1,185.0

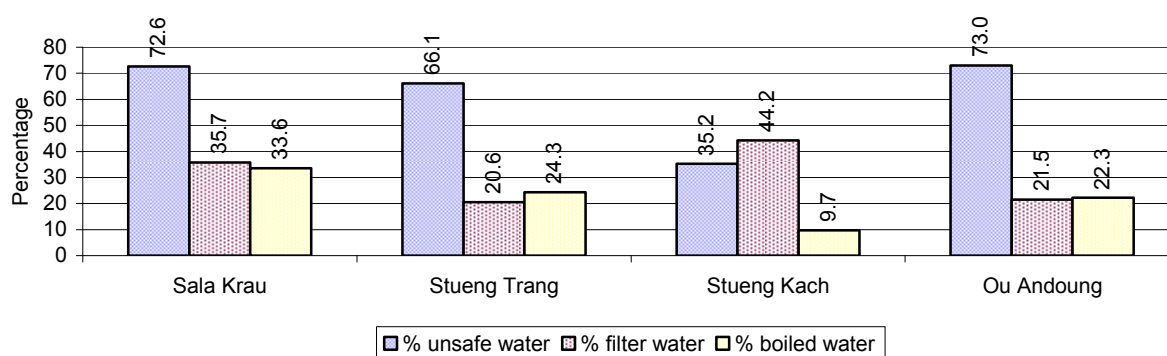
**Note:** Ratio calculated by dividing the number of houses with latrines by the total population

### 3.3.15 Ratio of People to Latrines, by Commune, in 2008



**Note:** Ratio calculated by dividing the number of houses with latrines by the total population in a Commune.

### 3.3.16 Percentage of Families drinking boiled, filtered or unsafe Water, by Commune, in 2008



**Note:** Calculated as a percentage of the total number of families in each commune.

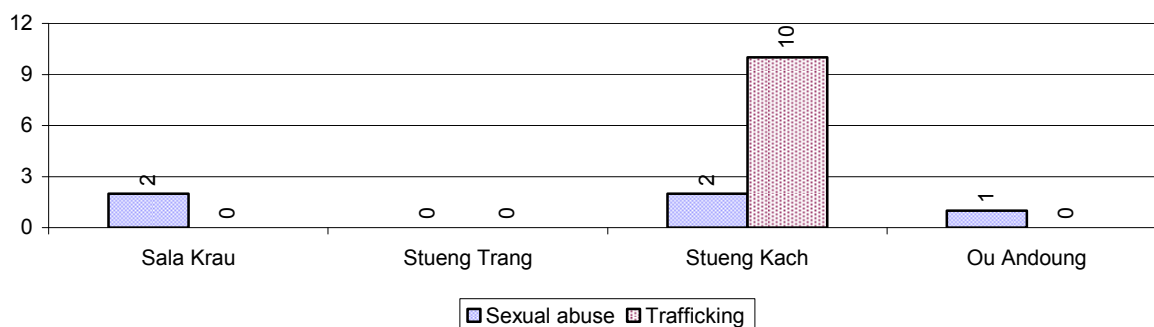
## 3.4 Vulnerable groups

### 3.4.1 Vulnerable Groups in need of special Protection over 3 years

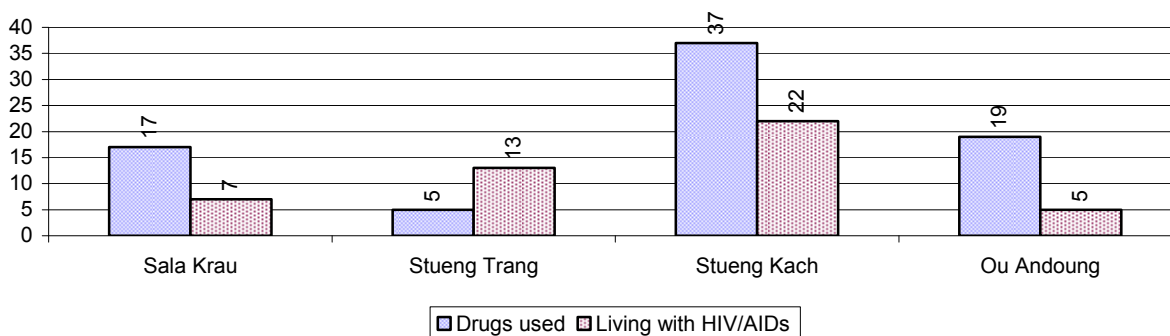
Vulnerable groups	2006	2007	2008
Victims of sexual abuse	5 person(s)	6 person(s)	5 person(s)
Victims of human trafficking	4 person(s)	0 person(s)	10 person(s)
Families with family member(s) using drugs	43 families	39 families	78 families
Families with family member(s) living with HIV/AIDS	28 families	32 families	47 families
Children under 18 yrs old whose parent died of AIDS	27 person(s)	49 person(s)	23 person(s)
Orphaned/abandoned children under 18 yrs old (all cases)	88 person(s)	127 person(s)	94 person(s)
Elderly persons without guardian	82 person(s)	93 person(s)	61 person(s)
Disabled people able to earn an income	132 person(s)	153 person(s)	125 person(s)
Disabled people unable to earn an income	21 person(s)	32 person(s)	26 person(s)
Disabled people under 18 yrs old	14 person(s)	12 person(s)	12 person(s)
Victims of natural disasters	980 families	815 families	392 families
Victims of land mines and unexploded weapons	16 person(s)	48 person(s)	14 person(s)



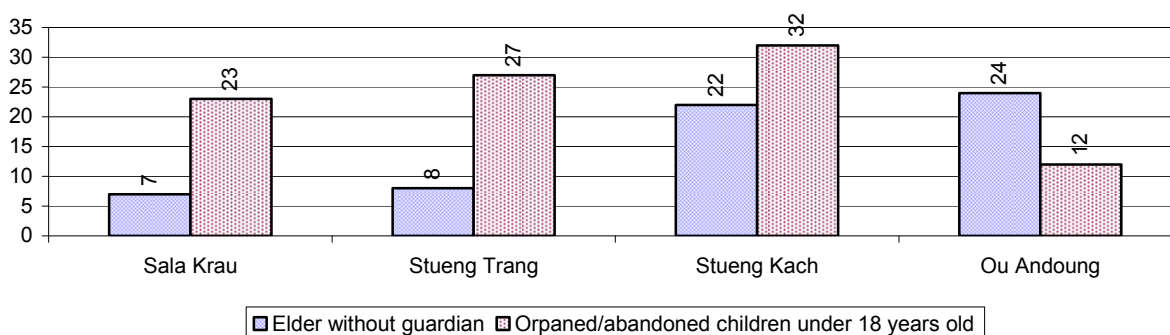
### 3.4.2 Registered Victims of sexual Abuse or Trafficking, by Commune, for 2008



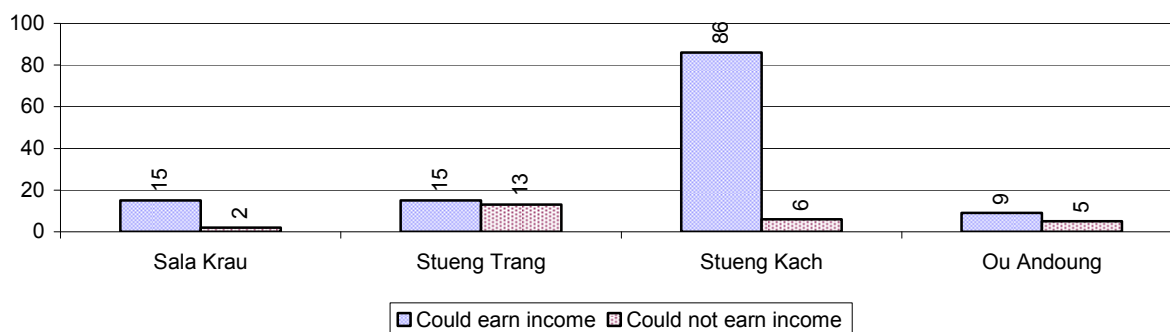
### 3.4.3 Registered Families with Member(s) using Drugs or living with HIV/AIDS, by Commune, for 2008



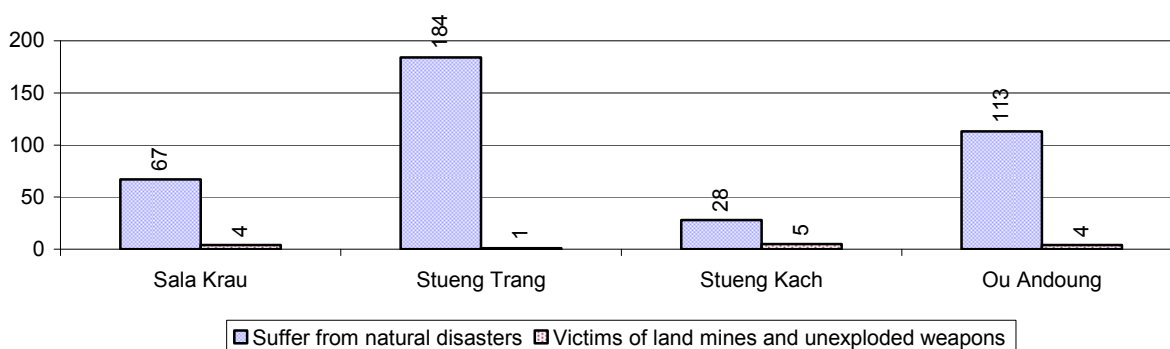
### 3.4.4 Elderly Persons without a Guardian and orphaned/abandoned Children under 18 years old, by Commune, for 2008



### 3.4.5 Number of disabled People who could or could not earn an Income, by Commune, for 2008



### 3.4.6 Number of Families who suffered from natural Disasters, and number of Victims of Land Mines and unexploded Weapons, by Commune, in 2008



## 3.5 Migration

### 3.5.1 Migration over 3 years

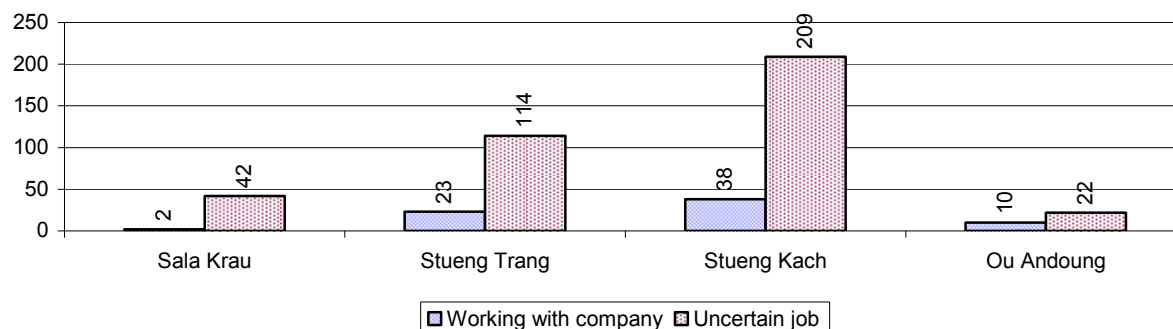
Description	2006	2007	2008
Number of families permanently in-migrated	207families	932 families	1,002 families
Total number of people	898 person(s)	874 person(s)	4,585 person(s)
Total number of female	432 person(s)	417 person(s)	2,544 person(s)
Number of families permanently out-migrated	324 families	328 families	205 families
Total number of people	1,230 person(s)	1,290 person(s)	971 person(s)
Total number of female	596 person(s)	625 person(s)	464 person(s)
Number of families staying temporarily	289 families	257 families	395 families
Total number of people	1,148 person(s)	968 person(s)	1,397 person(s)
Total number of female	569 person(s)	461 person(s)	717 person(s)

### 3.5.2 Job Migration

Description	2006	2007	2008	
Number of people migrated to work with company/factory	2%	0%	0%	73 persons
Number of people migrated to work, but have uncertain jobs	4%	3%	2%	387 persons

**Note:** Calculated as a percentage of the total population of 18-60 year olds

### 3.5.3 Number of People working outside their home Villages in a Company/Factory or with an uncertain Job in 2008

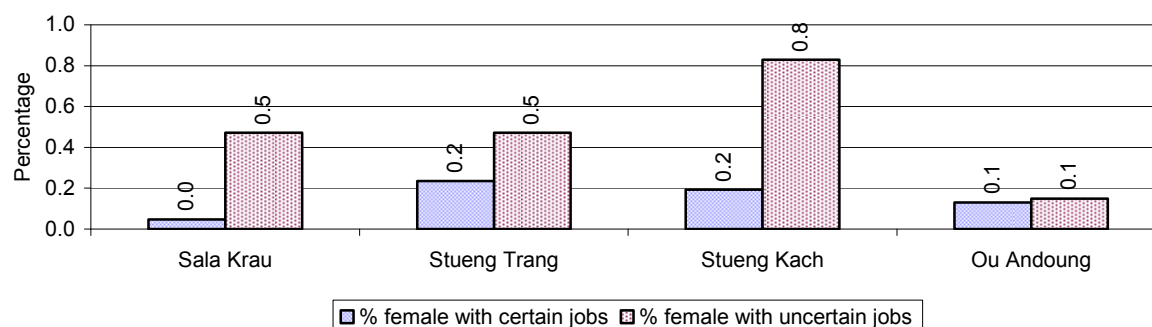


### 3.5.4 Female migration over 3 years

Description	2006 %	2007 %	2008	
			%	Number
Total number of migrants	2.7%	1.7%	1.5%	460 person(s)
Number of female migrants	1.5%	0.8%	0.7%	223 person(s)
Total number of migrants, who go to work with company/factory (with certain jobs)	0.9%	0.2%	0.2%	73 person(s)
Number of female migrants with certain jobs	0.7%	0.1%	0.2%	54 person(s)
Total number of migrants with uncertain jobs	1.8%	1.5%	1.3%	387 person(s)
Number of female migrants with uncertain jobs	0.8%	0.7%	0.5%	169 person(s)

**Note:** Calculated as a percentage of the total population

### 3.5.5 Percentage female Migrants with certain and uncertain Jobs, by Commune, in 2008



**Note:** Calculated as a percentage of the total population of the commune

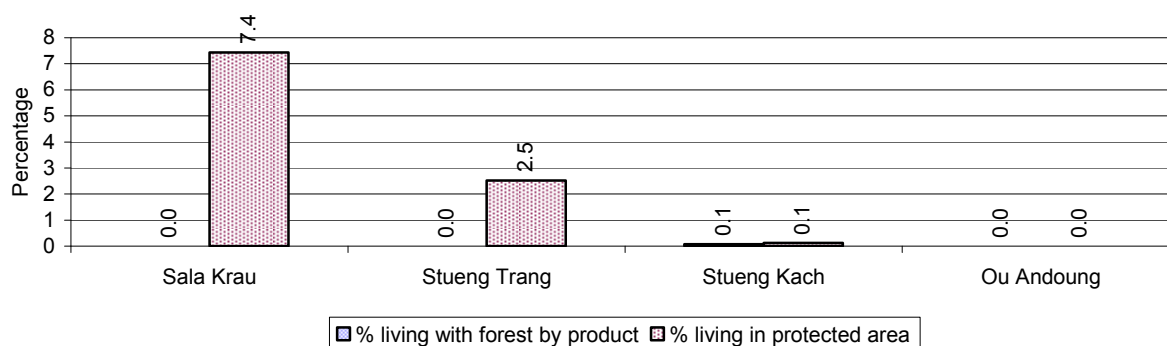
## 4 Natural Resources and Environment (NRE)

### 4.1 Families involved with NRE issues over 3 years

Description	2006 %	2007 %	2008	
			%	Number
Families living with forest by products	0 %	0 %	0 %	2 families
Families living in a protected area	0 %	0 %	2 %	114 families
Houses with access to garbage collection service	0 %	0 %	0 %	0 families
Families affected by environmental pollution	4 %	3 %	5 %	296 families
Families using chemical fertilizer	10 %	7 %	15 %	917 families
Families using chemical pesticide	40 %	33 %	34 %	2,128 families

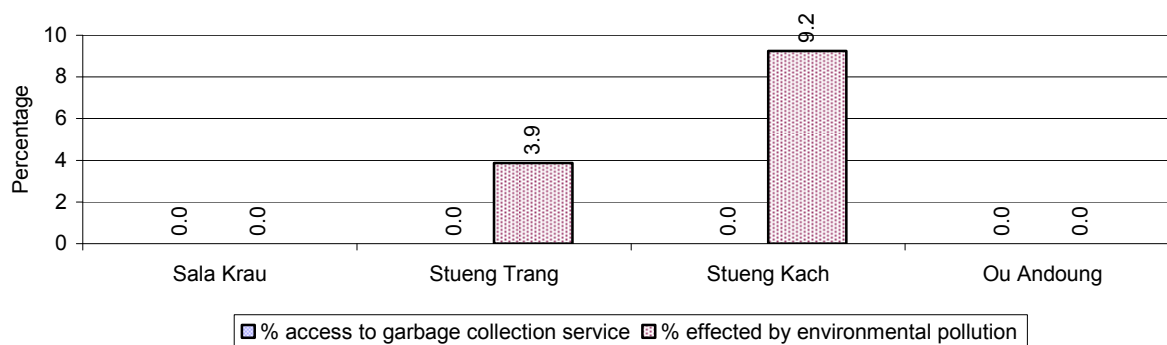
**Note:** Calculated as a percentage of the total number of families

### 4.2 Percentage of Families involved with Natural Resource issues, by Commune, for 2008



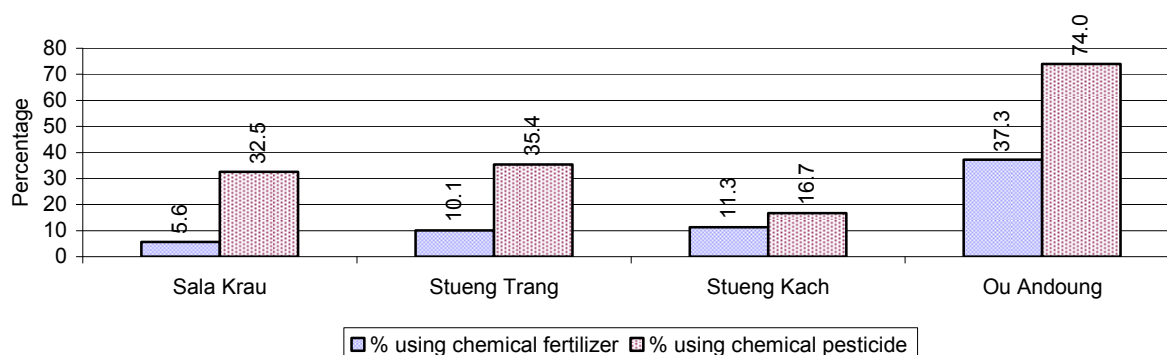
**Note:** Calculated as a percentage of the number of families in each commune

### 4.3 Percentage Houses with access to Garbage collection and Families affected by environmental Pollution, by Commune, for 2008



**Note:** Garbage collection is calculated as a percentage of the total number of houses in each commune and families affected by environmental pollution is calculated as a percentage of the total number of families in each commune.

#### 4.4 Percentage Families using chemical Fertilizer and chemical Pesticides, by Commune, for 2008



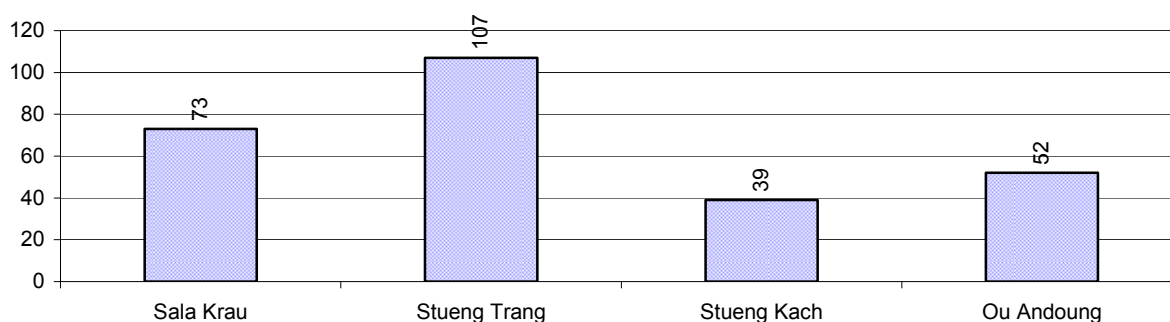
**Note:** Calculated as a percentage of the total number of families in each commune

## 5 Administration and Security

### 5.1 Birth Registration across 3 years

Description	2006	2007	2008
Number of infants to be registered	573 person(s)	459 person(s)	546 person(s)
Number of unregistered infants the year	332 person(s)	271 person(s)	271 person(s)
Percentage of infants unregistered	58 %	59 %	50 %

### 5.2 Number of unregistered Infants born in 2008, by Commune

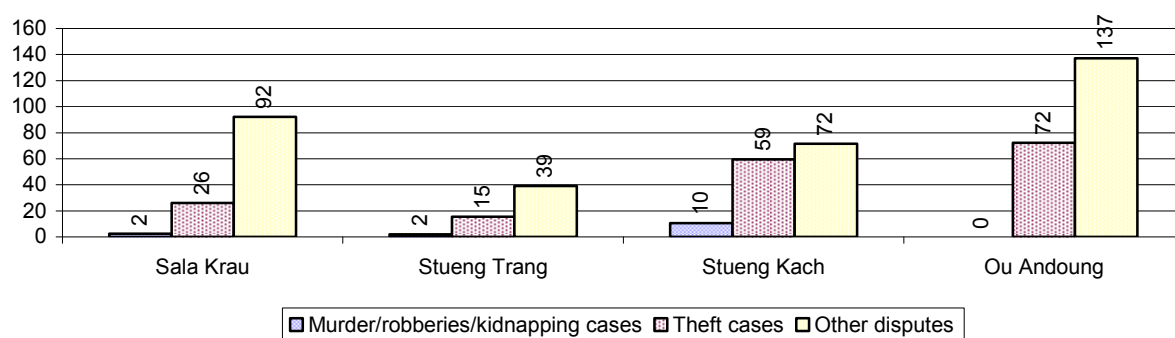


### 5.3 Registered criminal Cases over 3 years

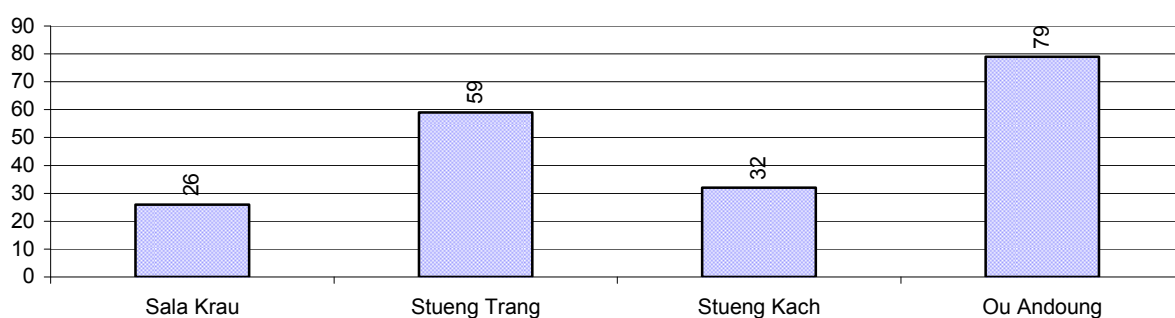
Description	2006	2007	2008
Murders, robberies and kidnapping cases	6 case(s)	11 case(s)	15 case(s)
Theft cases	124 case(s)	157 case(s)	133 case(s)
land dispute cases	163 case(s)	196 case(s)	196 case(s)
Other disputes cases	224 case(s)	245 case(s)	233 case(s)

**Note:** this reflects only registered criminal cases

#### 5.4 Registered criminal Cases per 10,000 people, by Commune, for 2008



#### 5.5 Number of registered Land Disputes, by Commune, in 2008

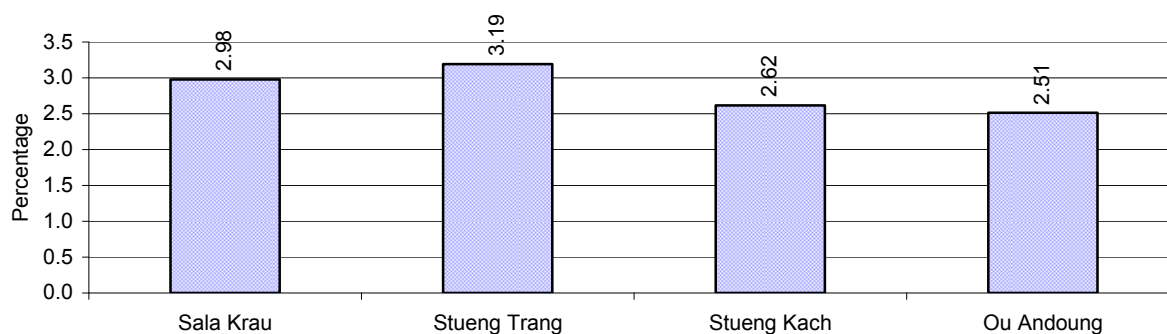


## 6 Gender

### 6.1 Registered Domestic Violence over 3 years

Description		2006	2007	2008
Families experiencing domestic violence		149 families	134 families	174 families(s)
% families experiencing domestic violence		3 %	2 %	3 %
Domestic violence cases reported by village chiefs		45 case(s)	6 case(s)	99 case(s)
Type	Physical violence	9 case(s)	2 case(s)	17 case(s)
	Sexual violence	6 case(s)	1 case(s)	3 case(s)
	Mental violence	17 case(s)	1 case(s)	51 case(s)
	Household economic violence	13 case(s)	2 case(s)	28 case(s)
Number of administrative decisions on domestic violence		38 case(s)	1 case(s)	61 case(s)
% of administrative decisions on domestic violence		84 %	17 %	62 %

### 6.2 Percentage of registered cases of Families experiencing domestic Violence, by Commune, in 2008



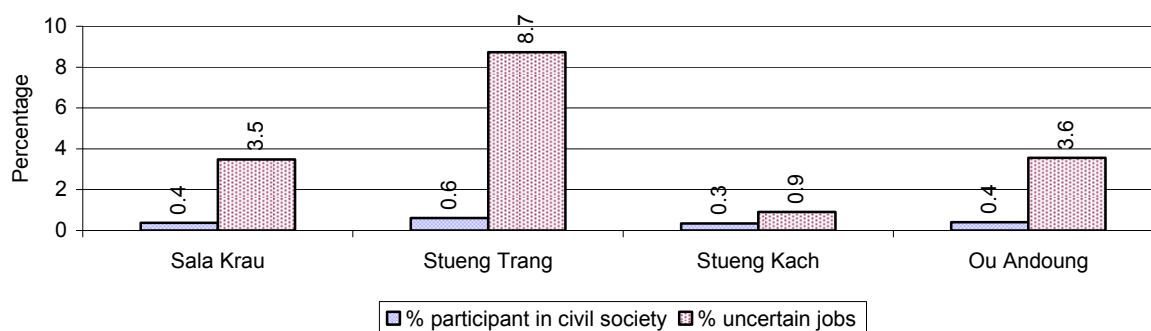
**Note:** Calculated as a percentage of the total number of families in each commune

### 6.3 Women's involvement over 3 years

Description	2006 %	2007 %	2008	
			%	Number
People participating in civil society	1%	2%	1%	374 person(s)
Women participating in civil society	0%	0%	0%	138 person(s)
People, 18-60 yrs, with uncertain/irregular jobs	11%	11%	8%	1,237 person(s)
Women, 18-60 yrs, with uncertain/irregular jobs	5%	5%	4%	624 person(s)

**Note:** Participation can be in NGOs, CBOs, credit groups, women's unions, parties and other civil society organizations. The first section is calculated as a percentage of the total population. The second section is calculated as a percentage of the total 18-60 year old population.

#### 6.4 Percentage of Female Participants in Civil Society and of 18-60 year women with uncertain Jobs, by Commune, in 2008



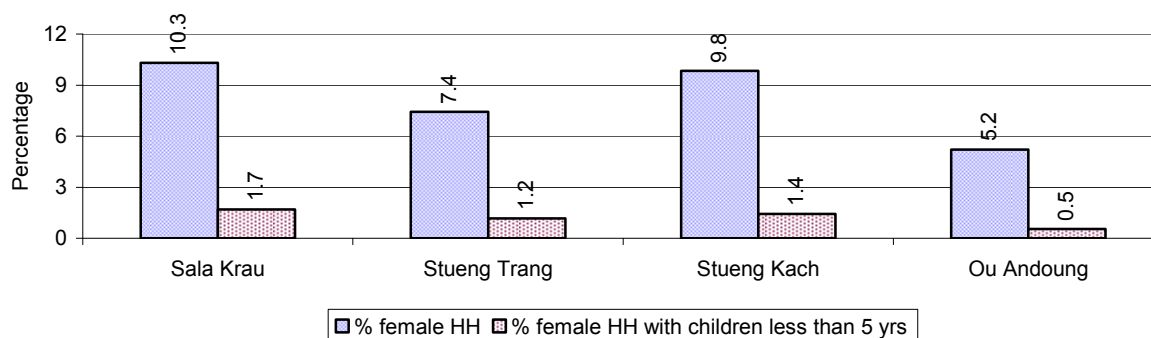
**Note:** Percentage of female participants in civil society is calculated as a percentage of the total population per commune. The percentage of 18-60 years old women with uncertain jobs is calculated as a percentage of the total 18-60 year old population per commune.

#### 6.5 Female-headed Households over 3 years

Families with:	2006	2007	2008	
	%	%	%	Number
Households in which a woman is the family head	8%	8%	8%	524 families
Households in which a woman is the family head with children of less than 5 yrs	2%	2%	1%	77 families

**Note:** Calculated as a percentage of the total number of families

#### 6.6 Percentage female-headed Households and with Children of less than 5 years old, by Commune, in 2008



**Note:** Calculated as a percentage of the total number of families in each commune  
HH: Headed Household



## 7 Indigenous People in the District

### 7.1 Ethnic Minorities in the District over 3 years

Race of indigenous	2006		2007		2008	
	# families	# population	# families	# population	# families	# population
Phnong	0 families	0 person(s)	0 families	0 person(s)	0 families	0 person(s)
Kouy	0 families	0 person(s)	0 families	0 person(s)	0 families	0 person(s)
Stieng	0 families	0 person(s)	0 families	0 person(s)	0 families	0 person(s)
Mil	0 families	0 person(s)	0 families	0 person(s)	0 families	0 person(s)
Kroal	0 families	0 person(s)	0 families	0 person(s)	0 families	0 person(s)
Thmorn	0 families	0 person(s)	0 families	0 person(s)	0 families	0 person(s)
Khaonh	0 families	0 person(s)	0 families	0 person(s)	0 families	0 person(s)
Tompouonn	0 families	0 person(s)	0 families	0 person(s)	0 families	0 person(s)
Charay	0 families	0 person(s)	0 families	0 person(s)	0 families	0 person(s)
Kroeung	0 families	0 person(s)	0 families	0 person(s)	0 families	0 person(s)
Kavet	0 families	0 person(s)	0 families	0 person(s)	0 families	0 person(s)
Saouch	0 families	0 person(s)	0 families	0 person(s)	0 families	0 person(s)
Lun	0 families	0 person(s)	0 families	0 person(s)	0 families	0 person(s)
Kachak	0 families	0 person(s)	0 families	0 person(s)	0 families	0 person(s)
Praov	0 families	0 person(s)	0 families	0 person(s)	0 families	0 person(s)
Others	0 families	0 person(s)	0 families	0 person(s)	0 families	0 person(s)
<b>Total</b>	0 families	0 person(s)	0 families	0 person(s)	0 families	0 person(s)

**Note:** "Others" refer to other ethnic groups which are not listed.

### 7.2 Other Minorities in the District over 3 years

Minority	2006		2007		2008	
	# families	# population	# families	# population	# families	# population
Khmer Islamic	4 families	18 person(s)	3 families	17 person(s)	7 families	30 person(s)
Vietnamese	0 families	0 person(s)	0 families	0 person(s)	0 families	0 person(s)
Laos	0 families	0 person(s)	0 families	0 person(s)	0 families	0 person(s)

**Note:** Number of indigenous and minority population are additional data, so some village may not recorded.



## **SECTION C: PLANS AND PROJECTS**



## 8 Priorities and Plans

### 8.1 Priorities of Commune Councils for 2009 in the District by Sector

The District Priority Activity Matrix (DPAM) data are taken from the CDPD. The DPAM is used for the District Integration Workshop (DIW), to show what kind of projects the commune has proposed in their Commune Investment Plan (CIP) for 2009. Donors, departments and other agencies then consider which projects they want to support and which projects they are not interested in. This results in Temporary Agreements between the Commune Council and the Supporter (NGO, Department, private donor, etc), as shown in table 8.2

No.	Project Name	Sala Krau	Stueng Trang	Stueng Kach	Ou Andoung	Req.Project
		240201	240202	240203	240204	Total
Economic						
1	Chemical and pesticide application training				6 training	1
2	Mixed farming system training	2 training		2 training	6 training	3
3	Mushroom growing training				6 training	1
4	Corn cultivation demonstration				6 training	1
5	Animal vaccination request				50 Head	1
6	Village veterinary training	8 person		13 person	6 person	3
7	Animal raising training	2 training	2 training			2
8	Rice seed request	7810 Kg				1
9	Fruit trees seedling request	7128 Tree			600 Tree	2
10	Calf for raising request	891 Head	200 Head	200 Head	50 Head	4
11	Sow for raising request	891 Head	200 Head	200 Head		3
12	Vegetable seeds request	89 T				1
13	Chicken request	4455 Head	2000 Head	5000 Head		3
14	Fish fingerling request	267300 fingerling	5000 fingerling	5000 fingerling		3
15	Culvert construct across road	50 place	16 place			2
16		22 km	40 km	16 km	12 km	4
17		12 km	21 km	18 km	32 km	4
18			5 place		2 place	2
19		20850 m	4075 m			2
20	Cash credit	8 village	16 village	13 village	6 village	4
21	Market place creation/construction				1 place	1
22	Electricity supply	5 village			6 village	2
Social						
1	Antenatal care		12 time	12 time		2
2	Reproductive health awareness education				2 time	1

District Data Book 2009: Development Plans and Projects

No.	Project Name	Sala Krau	Stueng Trang	Stueng Kach	Ou Andoung	Req.Project
		240201	240202	240203	240204	Total
3	Health/hygiene education for local people	2 training	2 training			2
4	Women and children health care education			12 time		1
5	Children immunization provision	16 time	5 time	5 time	2 time	4
6	Health clinic service		12 time		2 time	2
7	Mosquito nets distribution/treatment		735 mosqui-net	2371 mosqui-net	1500 mosqui-net	3
8	Mosquito larvae removal treatment				1500 bag	1
9	Pond water construction/rehabilitation	9 Pond				1
10	Well digging				10 piece	1
11	Latrine construction	800 toilet	735 toilet	500 toilet	918 toilet	4
12					1 building	1
13	KMeragppl;meFüa)aycMeraHTwks#at	891 Container	735 Container	2000 Container	1130 Container	4
14	KMeragBagykS		735 Jar	50 Jar	1130 Jar	3
15		22 well	80 well	20 well	16 well	4
16			32 Pond		6 Pond	2
17	Literacy class	8 class				1
18		3 building			2 building	2
19	Kindergarten school construction/repair				1 building	1
20	Motivating pupil's parents for school enrollment	2 training			2 training	2
21	Scholarship provision to poor pupils	1 time	9 time	9 time		3
22	Bicycle/motorcycle/radio repairing skill training				6 person	1
<b>NREM</b>						
1	Environmental awareness and law education	2 training	12 training	2 training		3
2	Organizing environment day				1 time	1
3	Organizing tree planting day	300 Tree	3675 Tree	3000 Tree		3
4	Illegal fishing prevention		1 time	12 time	12 time	3
5	Fish habitat/fish species protection/conservation	2 training				1
6	Public rubbish bin sitting				12 time	1
<b>Administration and Security</b>						
1	Civil registration encouragement		12 time			1
2	People guard activities formation/strengthening				12 Team	1
3	Drug and related law education		4 training	12 training	4 training	3
4	Gambling control/elimination activation		12 time	12 time	12 Month	3
5	Stealing elimination activation	2 training			12 time	2
6	Security post creation/construction/repairing			12 time		1
7	Drug business/use prevention	2 training				1

District Data Book 2009: Development Plans and Projects

No.	Project Name	Sala Krau	Stueng Trang	Stueng Kach	Ou Andoung	Req.Project
		240201	240202	240203	240204	Total
8	Abused/violated/illegal acts quelled activation		12 time			1
9	Demining project	112 ha	474 ha	23 ha	2525 ha	5
Gender						
1	Gender mainstreaming concept training				6 training	1
2	Gender mainstreaming in CIP		2 training			1
3	Woman and children's rights dissemination	2 training	2 training		2 training	3
4	Women vocational training				2 training	1
5	Weaving skill training/weaving craft creation	1 training		2 training		2
6	Lady makeup/hair dressing skill training	2 training	2 training	2 training		3
7	Law against domestic violence dissemination	2 training	4 training		12 training	3
8	Law against trafficking dissemination	2 training		12 training	6 training	3
9	Trafficking of women/children control activity strengthening		4 training	12 training		2

**Source:** CDPD – District Priority Matrix

## 8.2 Temporary Agreements by Commune, for 2009<sup>2</sup>

At the District Integration Workshop (DIW) the Supporters (donors, agencies, private donors, NGOs, etc.) identify which projects/activities they would like to support or they put forward their own projects to be implemented in a particular commune. Once there is agreement between Commune Councils and Supporters on specific projects a **Temporary Agreement** is signed by the commune and the Supporter to show their mutual commitment to the identified projects/activities.

*It is important to keep in mind that such Temporary Agreements do not necessarily result in implementation.*

### 8.2.1 Temporary Agreements for 2009 as per DIW 2008 for Commune: Sala Krau

Commune GIS	Commune	Temporary Agreements				Supporter	Funding Source	Listed in CIP befor DIW
		Project Name	Quantity	Unit	Est.Cost (K.Riels)			
Economic								
240201	Sala Krau	Cash saving group training	4	training	1712	CARE International in Cambodia		<input type="checkbox"/>
240201	Sala Krau		3	day	873	Department of Agriculture Forestry and Fisheries		<input type="checkbox"/>
240201	Sala Krau		1	day	634	Department of Agriculture Forestry and Fisheries		<input type="checkbox"/>
240201	Sala Krau		1	day	726	Department of Agriculture Forestry and Fisheries		<input type="checkbox"/>
240201	Sala Krau		3	day	291	Department of Agriculture Forestry and Fisheries		<input type="checkbox"/>
240201	Sala Krau	ss	3	day	600	Department of Agriculture Forestry and Fisheries		<input type="checkbox"/>
240201	Sala Krau	Earth road construction	1	km	32000	Department of Rural Development		✓
240201	Sala Krau	Canal, single pipe and water gate construction	1700	m	40000	Department of Rural Development		✓
240201	Sala Krau	Mixed farming system training	3	demo	96	Department of Agriculture Forestry and Fisheries		✓
240201	Sala Krau		3	demo	628	Department of Agriculture Forestry and Fisheries		<input type="checkbox"/>
240201	Sala Krau	Mixed farming system training	4	day	1504	Department of Agriculture		✓

<sup>2</sup> Not all the data from the CDPD has been translated to English, this has resulted in some cells in the TA tables being blank.



District Data Book 2009: Development Plans and Projects

Commune GIS	Commune	Temporary Agreements				Supporter	Funding Source	Listed in CIP befor DIW
		Project Name	Quantity	Unit	Est.Cost (K.Riels)			
						Forestry and Fisheries		
240201	Sala Krau	Cash saving formation support	4	training	3616	CARE International in Cambodia		<input type="checkbox"/>
240201	Sala Krau		1	Course/year	960	CARE International in Cambodia		<input type="checkbox"/>
240201	Sala Krau	Animal raising training	12	training	2280	CARE International in Cambodia		✓
240201	Sala Krau	Plastic pump installation support	24	family	5760	CARE International in Cambodia		<input type="checkbox"/>
240201	Sala Krau		1	Course/year	160	CARE International in Cambodia		<input type="checkbox"/>
240201	Sala Krau		20	family	2160	CARE International in Cambodia		<input type="checkbox"/>
240201	Sala Krau	Plastic pump installation training	4	training	184	CARE International in Cambodia		<input type="checkbox"/>
240201	Sala Krau	Frog raising technique training	2	Course/year	360	CARE International in Cambodia		<input type="checkbox"/>
240201	Sala Krau	Frog raising support	40	family	4320	CARE International in Cambodia		<input type="checkbox"/>
240201	Sala Krau	Crop seed credit for farmer	40	family	6720	CARE International in Cambodia		<input type="checkbox"/>
240201	Sala Krau	Vegetable and mushroom growing support	40	family	1600	CARE International in Cambodia		<input type="checkbox"/>
240201	Sala Krau		4	training	360	CARE International in Cambodia		<input type="checkbox"/>
240201	Sala Krau		8	Course/year	1280	CARE International in Cambodia		<input type="checkbox"/>
240201	Sala Krau		1	Course/year	300	CARE International in Cambodia		<input type="checkbox"/>
240201	Sala Krau	Vegetable and mushroom growing training	4	training	1000	CARE International in Cambodia		<input type="checkbox"/>
Social								
240201	Sala Krau	Latrine construction	15	toilet	2800	Department of Rural Development	PIF	✓

District Data Book 2009: Development Plans and Projects

Commune GIS	Commune	Temporary Agreements				Supporter	Funding Source	Listed in CIP before DIW
		Project Name	Quantity	Unit	Est.Cost (K.Riels)			
240201	Sala Krau	Scholarship provision to poor pupils	6	person	2880	Buddhist For Development		✓
240201	Sala Krau		3	well	264	Department of Rural Development	PIF	✓
NREM								
240201	Sala Krau		4	Course/year	360	CARE International in Cambodia		<input type="checkbox"/>
240201	Sala Krau		2	Course/year	140	CARE International in Cambodia		<input type="checkbox"/>
240201	Sala Krau		2	Course/year	320	CARE International in Cambodia		<input type="checkbox"/>
Administration and Security								
240201	Sala Krau		0	ha	0	Cambodian Mine Action Center		✓
240201	Sala Krau	Demining project	5	ha	0	Cambodian Mine Action Center		✓
240201	Sala Krau	Demining project	24	ha	0	Cambodian Mine Action Center		✓
240201	Sala Krau	Demining project	0	ha	0	Cambodian Mine Action Center		✓
240201	Sala Krau	Demining project	140	day	0	Cambodian Mine Action Center		✓
240201	Sala Krau		100	Copies	80	Buddhist For Development		<input type="checkbox"/>
240201	Sala Krau	Demining project	59	ha	2368400	CARE International in Cambodia		✓
240201	Sala Krau		4	time	3120	Buddhist For Development		<input type="checkbox"/>
Gender								
240201	Sala Krau		1	day	480	Department of Agriculture Forestry and Fisheries		<input type="checkbox"/>
240201	Sala Krau		1	day	388	Department of Women	PIF	<input type="checkbox"/>
240201	Sala Krau	Weaving skill training/weaving craft creation	1	training	1000	Department of Women		✓
240201	Sala Krau	Lady makeup/hair dressing skill training	1	training	1000	Department of Women		✓
240201	Sala Krau		1	training	171	Department of Women	PIF	<input type="checkbox"/>
240201	Sala Krau	Law against domestic violence	1	day	156	Department of Women	PIF	✓

Commune GIS	Commune	Temporary Agreements				Supporter	Funding Source	Listed in CIP before DIW
		Project Name	Quantity	Unit	Est.Cost (K.Riels)			
		dissemination						
240201	Sala Krau		1	Course/year	151	Department of Women	PIF	<input type="checkbox"/>
240201	Sala Krau		4	time	191	Department of Women	PIF	<input type="checkbox"/>
240201	Sala Krau	Law against domestic violence dissemination	3	case	204	Department of Women	PIF	✓
240201	Sala Krau		5	day	136	Department of Women	PIF	<input type="checkbox"/>
240201	Sala Krau		1	day	160	Department of Women	PIF	<input type="checkbox"/>

### 8.2.2 Temporary Agreements for 2009 as per DIW 2008 for Commune: Stueng Trang

Commune GIS	Commune	Temporary Agreements				Supporter	Funding Source	Listed in CIP befor DIW
		Project Name	Quantity	Unit	Est.Cost (K.Riels)			
Economic								
240202	Stueng Trang	Construct concrete bridge	1	place	0	Ministry of Rural Development		✓
240202	Stueng Trang	Earth road construction	4	Line	56000			✓
240202	Stueng Trang	ly	1	demo	228	Department of Agriculture Forestry and Fisheries		☐
240202	Stueng Trang	Mixed farming system training	4	day	1504	Department of Agriculture Forestry and Fisheries		☐
240202	Stueng Trang		1	day	634	Department of Agriculture Forestry and Fisheries		☐
240202	Stueng Trang		1	day	726	Department of Agriculture Forestry and Fisheries		☐
240202	Stueng Trang	ss	3	day	600	Department of Agriculture Forestry and Fisheries		☐
240202	Stueng Trang		3	day	600	Department of Agriculture Forestry and Fisheries		☐
240202	Stueng Trang		2	demo	416	Department of Agriculture Forestry and Fisheries		☐
240202	Stueng Trang	Animal raising training	2	demo	96	Department of Agriculture Forestry and Fisheries		✓
240202	Stueng Trang		3	day	873	Department of Agriculture		☐

District Data Book 2009: Development Plans and Projects

Commune GIS	Commune	Temporary Agreements				Supporter	Funding Source	Listed in CIP before DIW
		Project Name	Quantity	Unit	Est.Cost (K.Riels)			
						Forestry and Fisheries		
240202	Stueng Trang	Routine road maintenance	30	km	0	Ministry of Rural Development		<input type="checkbox"/>
Social								
240202	Stueng Trang	Latrine construction	15	toilet	2800	Department of Rural Development	PIF	✓
240202	Stueng Trang		8	well	704	Department of Rural Development	PIF	✓
Administration and Security								
240202	Stueng Trang	Demining project	23	ha	0	Cambodian Mine Action Center		✓
240202	Stueng Trang	Drug and related law education	2	time	720	Department of Social and Veteran Affairs and Youth Rehabilitation	PIF	✓
240202	Stueng Trang	Civil registration encouragement	5	time	1800	Department of Social and Veteran Affairs and Youth Rehabilitation	PIF	✓
240202	Stueng Trang	Mine/UXO risks reduction program	240	training	0	Cambodian Mine Action Center		<input type="checkbox"/>
240202	Stueng Trang		0	ha	0	Cambodian Mine Action Center		✓
240202	Stueng Trang	Demining project	42	ha	0	Cambodian Mine Action Center		✓
Gender								
240202	Stueng Trang	Gender mainstreaming in CIP	5	day	136	Department of Women	PIF	✓
240202	Stueng Trang		1	day	480	Department of Agriculture Forestry and Fisheries		<input type="checkbox"/>
240202	Stueng Trang		1	day	388	Department of Women	PIF	<input type="checkbox"/>
240202	Stueng Trang	Law against domestic violence dissemination	3	case	204	Department of Women	PIF	✓
240202	Stueng Trang		1	training	1000	Department of Women	PIF	<input type="checkbox"/>
240202	Stueng Trang		4	time	163	Department of Women	PIF	<input type="checkbox"/>
240202	Stueng Trang		1	Course/year	151	Department of Women	PIF	<input type="checkbox"/>
240202	Stueng Trang	Law against domestic violence dissemination	1	training	156	Department of Women	PIF	✓
240202	Stueng Trang		1	Course/year	171	Department of Women	PIF	<input type="checkbox"/>
240202	Stueng Trang	Lady makeup/hair dressing skill training	1	training	1000	Department of Women		✓

Commune GIS	Commune	Temporary Agreements				Supporter	Funding Source	Listed in CIP before DIW
		Project Name	Quantity	Unit	Est.Cost (K.Riels)			
240202	Stueng Trang		1	day	160	Department of Women	PIF	<input type="checkbox"/>

### 8.2.3 Temporary Agreements for 2009 as per DIW 2008 for Commune: Stueng Kach

Commune GIS	Commune	Temporary Agreements				Supporter	Funding Source	Listed in CIP befor DIW
		Project Name	Quantity	Unit	Est.Cost (K.Riels)			
Economic								
240203	Stueng Kach	Mixed farming system training	4	day	1504	Department of Agriculture Forestry and Fisheries		<input type="checkbox"/>
240203	Stueng Kach		19	km	0	Department of Rural Development		<input type="checkbox"/>
240203	Stueng Kach	Mixed farming system training	2	training	1104	Department of Agriculture Forestry and Fisheries		✓
240203	Stueng Kach		2	demo	416	Department of Agriculture Forestry and Fisheries		<input type="checkbox"/>
240203	Stueng Kach		3	day	873	Department of Agriculture Forestry and Fisheries		<input type="checkbox"/>
240203	Stueng Kach		3	day	727	Department of Agriculture Forestry and Fisheries		<input type="checkbox"/>
240203	Stueng Kach		1	day	634	Department of Agriculture Forestry and Fisheries		<input type="checkbox"/>
240203	Stueng Kach		1	day	726	Department of Agriculture Forestry and Fisheries		<input type="checkbox"/>
Social								
240203	Stueng Kach	Scholarship provision to poor pupils	10	person	480	Buddhist For Development		✓
240203	Stueng Kach		5	well	440	Department of Rural Development	PIF	✓
240203	Stueng Kach	Latrine construction	15	toilet	2800	Department of Rural Development	PIF	✓
240203	Stueng Kach	Non-formal education	1	village	21534	Department of Rural Development		<input type="checkbox"/>
240203	Stueng Kach	Health/hygiene education for local	72	time	4000	Cambodian Women for		✓

District Data Book 2009: Development Plans and Projects

Commune GIS	Commune	Temporary Agreements				Supporter	Funding Source	Listed in CIP before DIW
		Project Name	Quantity	Unit	Est.Cost (K.Riels)			
		people				Peace and Development		
240203	Stueng Kach		12	time	600	Cambodian Women for Peace and Development		<input type="checkbox"/>
Administration and Security								
240203	Stueng Kach		0	ha	0	Cambodian Mine Action Center		✓
240203	Stueng Kach	Drug and related law education	2	training	1080	Department of Social and Veteran Affairs and Youth Rehabilitation	PIF	✓
240203	Stueng Kach		100	Copies	80	Buddhist For Development		<input type="checkbox"/>
240203	Stueng Kach	Drug and related law education	13	training	3120	Buddhist For Development		✓
240203	Stueng Kach		200	training	0	Cambodian Mine Action Center		<input type="checkbox"/>
240203	Stueng Kach	Demining project	0	ha	0	Cambodian Mine Action Center		✓
Gender								
240203	Stueng Kach		1	Course/year	151	Department of Women	PIF	<input type="checkbox"/>
240203	Stueng Kach		1	Course/year	171	Department of Women	PIF	<input type="checkbox"/>
240203	Stueng Kach		4	time	163	Department of Women	PIF	<input type="checkbox"/>
240203	Stueng Kach		1	day	160	Department of Women	PIF	<input type="checkbox"/>
240203	Stueng Kach	Weaving skill training/weaving craft creation	1	training	1000	Department of Women		✓
240203	Stueng Kach		1	day	388	Department of Women	PIF	<input type="checkbox"/>
240203	Stueng Kach	Lady makeup/hair dressing skill training	1	training	1000	Department of Women		<input type="checkbox"/>
240203	Stueng Kach		1	day	480	Department of Agriculture Forestry and Fisheries		<input type="checkbox"/>
240203	Stueng Kach	Law against trafficking dissemination	3	case	204	Department of Women		✓
240203	Stueng Kach	Gender mainstreaming in CIP	5	day	136	Department of Women	PIF	<input type="checkbox"/>

**8.2.4 Temporary Agreements for 2009 as per DIW 2008 for Commune: Ou Andoung**

Commune GIS	Commune	Temporary Agreements				Supporter	Funding Source	Listed in CIP before DIW
		Project Name	Quantity	Unit	Est.Cost (K.Riels)			
Economic								
240204	Ou Andoung	Mixed farming system training	4	day	1504	Department of Agriculture Forestry and Fisheries		<input type="checkbox"/>
240204	Ou Andoung		1	day	634	Department of Agriculture Forestry and Fisheries		<input type="checkbox"/>
240204	Ou Andoung		1	day	726	Department of Agriculture Forestry and Fisheries		<input type="checkbox"/>
240204	Ou Andoung		3	day	727	Department of Agriculture Forestry and Fisheries		<input type="checkbox"/>
240204	Ou Andoung		3	day	873	Department of Agriculture Forestry and Fisheries		<input type="checkbox"/>
240204	Ou Andoung		3	demo	628	Department of Agriculture Forestry and Fisheries		<input type="checkbox"/>
240204	Ou Andoung	Mixed farming system training	3	training	1104	Department of Agriculture Forestry and Fisheries		✓
Social								
240204	Ou Andoung	Pump wells construction	3	well	2800	Department of Rural Development	PIF	✓
240204	Ou Andoung	Latrine construction	15	toilet	264	Department of Rural Development	PIF	✓
240204	Ou Andoung	Scholarship provision to poor pupils	2	person	480	Buddhist For Development		<input type="checkbox"/>
Administration and Security								
240204	Ou Andoung	Demining project	9	ha	0	Cambodian Mine Action Center		✓
240204	Ou Andoung		100	Copies	80	Buddhist For Development		<input type="checkbox"/>
240204	Ou Andoung		6	time	3120	Buddhist For Development		<input type="checkbox"/>
240204	Ou Andoung	Demining project	22	ha	0	Cambodian Mine Action Center		✓
240204	Ou Andoung		18	ha	0	Cambodian Mine Action Center		<input type="checkbox"/>
240204	Ou Andoung		0	ha	0	Cambodian Mine Action Center		<input type="checkbox"/>
240204	Ou Andoung		80	training	0	Cambodian Mine Action Center		<input type="checkbox"/>
Gender								
240204	Ou Andoung		1	day	480	Department of Agriculture		<input type="checkbox"/>

District Data Book 2009: Development Plans and Projects

Commune GIS	Commune	Temporary Agreements				Supporter	Funding Source	Listed in CIP before DIW
		Project Name	Quantity	Unit	Est.Cost (K.Riels)			
						Forestry and Fisheries		
240204	Ou Andoung		4	time	163	Department of Women	PIF	<input type="checkbox"/>
240204	Ou Andoung	Gender mainstreaming in CIP	5	day	136	Department of Women	PIF	<input type="checkbox"/>
240204	Ou Andoung		1	day	160	Department of Women	PIF	<input type="checkbox"/>
240204	Ou Andoung		1	day	388	Department of Women	PIF	<input type="checkbox"/>
240204	Ou Andoung	Woman and children's rights dissemination	1	training	360	Department of Social and Veteran Affairs and Youth Rehabilitation	PIF	✓
240204	Ou Andoung	Law against domestic violence dissemination	1	training	156	Department of Women	PIF	✓
240204	Ou Andoung	Woman and children's rights dissemination	1	training	151	Department of Women	PIF	✓
240204	Ou Andoung	Lady makeup/hair dressing skill training	1	training	1000	Department of Women		✓
240204	Ou Andoung	Gender mainstreaming concept training	1	training	171	Department of Women	PIF	✓
240204	Ou Andoung	Law against domestic violence dissemination	3	training	204	Department of Women	PIF	✓
240204	Ou Andoung		1	training	1000	Department of Women	PIF	✓

**Source:** CDPD, District Level Detail TA resulting from DIW



**8.3 Outputs, estimated and actual costs of C/S Fund Projects between 2005 and 2008, by Commune**

Commune	Project Type	Budget Year	Output		Quantity	Unit	Unit Cost MR	
			Description	Type			Estimate	Actual
Sala Krau	Rural Transport	2005	Laterite road	Repair	3.358	Km	21.73	21.74
Sala Krau	Rural Transport	2006	Single pipe culvert	New	2	Place	3.78	26.64
Sala Krau	Rural Transport	2006	Laterite road	Repair	2.55	Km	23.40	26.64
Sala Krau	Rural Transport	2007	Laterite road	Repair	1.66	Km	25.97	30.06
Sala Krau	Rural Transport	2007	Single pipe culvert	New	2	Place	4.06	30.06
Sala Krau	Rural Transport	2008	Single pipe culvert	New	3	Place	7.97	30.85
Sala Krau	Rural Transport	2008	Laterite road	New	1	Km	22.87	30.85
Stueng Trang	Rural Transport	2005	Double pipe culvert	New	2	Place	10.32	28.14
Stueng Trang	Rural Transport	2005	Earth road	New	2.529	Km	12.74	28.14
Stueng Trang	Rural Transport	2005	Single pipe culvert	New	2	Place	5.09	28.14
Stueng Trang	Rural Transport	2006	Double pipe culvert	New	1	Place	5.96	34.65
Stueng Trang	Rural Transport	2006	Single pipe culvert	New	5	Place	12.35	34.65
Stueng Trang	Rural Transport	2006	Earth road	New	2.09	Km	16.69	34.65
Stueng Trang	Rural Transport	2007	Single pipe culvert	New	2	Place	4.63	39.07
Stueng Trang	Rural Transport	2007	Earth road	New	1.88	Km	39.04	39.04
Stueng Trang	Rural Transport	2007	Laterite road	Repair	3199	Km	34.41	39.07
Stueng Trang	Rural Transport	2008	Earth road	New	1.73	Km	30.97	39.17
Stueng Trang	Rural Transport	2008	Single pipe culvert	New	3	Place	8.18	39.17
Stueng Kach	Rural Transport	2005	Laterite road	Repair	1.709	Km	19.30	30.53
Stueng Kach	Rural Transport	2005	Single pipe culvert	New	6	Place	10.95	30.53
Stueng Kach	Rural Transport	2006	Earth road	New	1.19	Km	11.27	38.12
Stueng Kach	Rural Transport	2006	Double pipe culvert	New	1	Place	5.76	38.12
Stueng Kach	Rural Transport	2006	Laterite road	Repair	1.3	Km	8.95	38.12
Stueng Kach	Rural Transport	2006	Single pipe culvert	New	5	Place	12.91	38.12
Stueng Kach	Rural Transport	2007	Single cell box culvert	New	1	Place	8.58	41.22
Stueng Kach	Rural Transport	2007	Laterite road	Repair	2	Km	22.22	41.22
Stueng Kach	Rural Transport	2007	Single pipe culvert	New	5	Place	9.76	41.22
Stueng Kach	Rural Transport	2008	Single pipe culvert	Repair	1	Place	1.48	43.97
Stueng Kach	Rural Transport	2008	Laterite road	Repair	2.59	Km	42.49	43.97
Ou Andoung	Rural Transport	2005	Laterite road	Repair	1.65	Km	11.47	21.25
Ou Andoung	Rural Transport	2005	Single pipe culvert	New	4	Place	9.75	21.25
Ou Andoung	Rural Transport	2006	Single pipe culvert	New	4	Place	8.80	25.88
Ou Andoung	Rural Transport	2006	Laterite road	Repair	1.558	Km	17.61	25.88

Commune	Project Type	Budget Year	Output		Quantity	Unit	Unit Cost MR	
			Description	Type			Estimate	Actual
Ou Andoung	Rural Transport	2007	Single pipe culvert	New	2	Place	3.99	31.40
Ou Andoung	Rural Transport	2007	Laterite road	Repair	6.4	Km	58.85	31.40
Ou Andoung	Rural Transport	2008	Single pipe culvert	New	1	Place	2.64	29.48
Ou Andoung	Rural Transport	2008	Earth road	New	1.547	Km	26.77	29.48

Source: PID

#### 8.4 Total Expenditure on C/S Fund Projects by sector and commune between 2005 and 2008

Sector	Total Cost in Million Riels			
	Sala Krau	Stueng Trang	Stueng Kach	Ou Andoung
Rural Transport	109.29	141.00	153.84	108.02

Source: PID

#### 8.5 Actual 2009 C/S Fund projects by Commune

Commune	Project Type	Project Output		Quantity	Unit	Fund Source (Riels)		
		Description	Type			Total	C/S	Local Contribution
Stueng Trang	Rural Transport	Laterite road	Repair	2.94	km	51,493,800	50,993,800	500,000
Stueng Trang	Rural Transport	Double pipe culvert 1.0m diameter	New	1	Place	51,493,800	50,993,800	500,000
Stueng Kach	Rural Transport	Laterite road	Repair	1.57	km	54,793,600	53,793,600	1,000,000
Stueng Kach	Rural Transport	Double pipe culvert 1.0m diameter	New	1	Place	54,793,600	53,793,600	1,000,000
Stueng Kach	Rural Transport	Single pipe culvert 1.0m diameter	New	1	Place	54,793,600	53,793,600	1,000,000
Stueng Kach	Rural Transport	Single pipe culvert 0.8m diameter	New	1	Place	54,793,600	53,793,600	1,000,000
Stueng Kach	Rural Transport	Double pipe culvert 0.6m diameter	New	1	Place	54,793,600	53,793,600	1,000,000
Ou Andoung	Rural Transport	Laterite road	Repair	2	km	37,366,500	37,016,500	350,000
Ou Andoung	Rural Transport	Single pipe culvert 0.6m diameter	New	1	Place	37,366,500	37,016,500	350,000

Source: PID

## 9 District level Projects from 2006 to 2009

District Initiative Projects (DIPs) are funded by Danida, DFID and PSDD (UNDP, DFID and SIDA).

### **Funding for 2006-2008**

Between 2006 and 2008 there were 14 provinces funded by PSDD and 10 by Danida and DFID. The list of provinces and who funded these is below

#### *Danida and DFID funded DIPs:*

Kampong Cham	Kampong Speu	Koh Kong	Kratie	Monduliri
Pursat	Ratanakiri	Siem Reap	Sihanoukville	Kep

#### *PSDD funded DIPs:*

Banteay Meanchey	Battambang	Kampong Chhnang	Kandal	Phnom Penh
Prey Veng	Svay Rieng	Takeo	Kampong Thom	Preah Vihear
Stung Treng	Kampot	Oddar Meanchey	Pailin	

### **Funding for 2009**

In 2009 there was a change to the number of provinces funded by the two streams. Danida and DFID were still funding the same 10 provinces they had been funding the previous three years, but two more provinces were added *Kampong Thom and Kampot*. Now PSDD funds 12 provinces and Danida and DFID fund 12.

## **9.1 District Initiative Infrastructure Projects from 2006 to 2009**

### **9.1.1 District Initiative Infrastructure Projects for 2006 to 2008**

Date	Project Name	Implementing Agencies	Budget (US\$)	Project Output & Capacity	Number of Beneficiaries
2006	Earth road	Inter-communes	12,342.00		
2007	Construct laterite road	Inter-commune	7,516.00		
2008	Laterite Road Construction in Sangkat Stoeng Trang and O'Andoung	Inter-commune	8,100.00	3200 m	14846(F:7503)

### 9.1.2 District Initiative Infrastructure Projects in 2009

*No District Initiative Infrastructure Projects have been implemented in this district for 2009*

## 9.2 District Initiative Service Projects from 2006 to 2009

### 9.2.1 District Initiative Service Projects for 2006 to 2008

Date	Project Names	Implementing agencies	Budget (US\$)	Project Output & Capacity	Number of Beneficiaries
2006	Tree planting in public area/ space	Forest Administration	675.00		
2006	Video production for youth education	Culture department	424.00		
2006	Youth education during Khmer new year	Culture department	442.00		
2006	Youth education during festival of death	Culture department	442.00		
2006	Workshop on human rights and law	Culture department	417.00		
2006	Education materials and allowance for poor students	Education department	3,000.00		
2007	Forest community formation and support	Forestry Admin Khan	1,000.00		
2007	Tree plantation	Forestry Admin Khan	779.00		
2007	Public Education at school on social morality and drugs use	District SA & Police	536.50		
2007	Land Law training to CCs and Village chiefs	District SA & Police	531.00		
2007	Training on Roles and Responsibilities Sangkat WFPs and village leaders	District SA & Police	239.00		
2007	Training on gender mainstreaming concept and R&R women	District Land	239.00		
2007	Dissemination on the forms of protection from Woman and child Trafficking	District WA	157.00		
2007	Dissemination on the forms of protection from Women and child Trafficking	District WA	146.50		
2007	Dissemination on the forms of protection from Woman and child Trafficking	District WA	198.50		
2008	Provide bicycle to 32 poor school children	Dist-Education office	1,200.00		
2008	Drug use education and dissemination	Dist-Police	500.00		
2008	Dissemination of the forms of Women and children and provide 6 bags 6 women focal points	Dist-Women	500.00		
2008	Land Law education to Village chief and Villagers	Dist-Land Magt	500.00		
2008	Environment Education through Billboards	Dist- Environment	450.00		

### **9.2.2 District Initiative Service Projects in 2009**

*No District Initiative Service Projects have been implemented in this district for 2009*

## **9.3 Inter Commune Council Projects in 2008 and 2009**

### **9.3.1 ICC Projects in 2008**

*No ICC projects in this district at this time*

### **9.3.2 ICC Projects in 2009**

*No ICC projects in this district at this time*

**Source:** ICC project, Ministry of Interior (DoLA), -UNDP project for Local Governance – DDLG

## **9.4 Other Projects in 2008 and 2009**

### **9.4.1 RPRP**

*There are no RPRP projects being implemented in this district or province at this time. The RPRP is only being implemented in Svay Rieng and Prey Veng*

#### **9.4.1.1 RPRP Projects from 2006 to 2008**

*No RPRP projects in this district at this time*

#### **9.4.1.2 RPRP Projects in 2009**

*No RPRP projects in this district at this time*

## **9.4.2 Seth Korma**

### **9.4.2.1 Seth Korma 2007**

*There are no Seth Korma projects being implemented in this district or province at this time.*

**Source:** UNICEF

### **9.4.2.2 Seth Korma 2008**

*There are no Seth Korma projects being implemented in this district or province at this time.*

**Source:** UNICEF

### **9.4.2.3 Seth Korma 2009**

*There are no Seth Korma projects being implemented in this district or province at this time.*

**Source:** UNICEF

## **SECTION D: SERVICES AND ORGANIZATIONS**





## 10 Infrastructure

### 10.1 Length of and Expenditure on Roads in 2008, by District

Roads	PLN	Pailin	Salakrau
Length of paved road in the district in Km	6	6	0
Length of unpaved roads in the district in Km	13	7	6
Amount spent on construction of roads in 2008 (\$)	24,298	24,298	0
Amount spent on repair and rehabilitation of roads in 2008 (\$)	607,994	564,000	43,994

**Note 1:** Please note that these data are not necessarily complete or correct. The data are derived from government agencies at provincial and district level which used different recording systems, did not always have complete data or were, sometimes, less than willing to share their data.

**Note 2:** Please be aware that these data are incomplete due to the fact that the amounts for the construction, repair and rehabilitation recorded reflect only funds provided by the government, not the contributions by any other parties.

### 10.2 Scale of and Expenditure on Irrigation in 2008, by District

Irrigation	PLN	Pailin	Salakrau
Number of irrigation schemes operating in 2008	1	0	1
Total nr of hectares under irrigation in dry season 2008	150	0	150
Total funds spent in 2008 on construction of irrigation systems (\$)	48,820	0	48,820
Total funds spent in 2008 on rehabilitation/repair of irrigation systems (\$)	-	0	0
Total funds spent in 2008 on operation and maintenance (\$)	1,250	0	1,250

**Note 1:** Please note that these data are not necessarily complete or correct. The data are derived from government agencies at provincial and district level which used different recording systems, did not always have complete data or were, sometimes, less than willing to share their data.

**Note 2:** Please be aware that the data above are incomplete as these only reflect funds provided by the government, not the contributions by farmers or other parties.

### 10.3 Power Supply in 2008, by District

Electricity	PLN	Pailin	Salakrau
Total number of electricity connections to households	3,927	2,790	1,137
Total number of electricity connections to agencies, companies, organizations	4	n/a	4
Total volume in KWh of electricity consumed last in 2008	9,336,277	2,249,218	7,087,059
Total amount collected from users for consumed electricity (\$)	2,118,107	477,959	1,640,148
Per capita electricity consumption in 2008 in Kwh	633	n/a	n/a

**Note 1:** Please note that these data are not necessarily complete or correct. The data are derived from government agencies at provincial and district level which used different recording systems, did not always have complete data or were, sometimes, less than willing to share their data.

**Note 2:** These data only record electricity provided by electricity companies and does not include homes powered by generators or batteries (for this information see Section B: General Profile, Part 1: General Information; table 1.3.1 and chart 1.3.4).

**Note 3:** In most provinces electricity is only provided through town-based networks

**Note 4:** Per capita consumption is calculated by dividing the total volume of electricity produced in 2008 by the number of people living in each district as per the 2008 census (for the provincial data it is calculated against the number of people living in the province)

## 11 Health Facilities

Please note that the Operational District (health) boundaries are different to the administrative district boundaries. Therefore the data provided here shows the facilities, staff, NGOs etc in each Operational District within the province NOT the administrative district.

### Acronyms

<b>Com Cov</b>	Commune Covered	<b>MW2</b>	Secondary Midwives
<b>CPA</b>	Complementary Package of Activities	<b>NU1</b>	Primary Nurse
<b>Dr</b>	Doctor	<b>NU2</b>	Secondary Nurse
<b>FDH</b>	Former District Hospital	<b>OD</b>	Operational District
<b>HC</b>	Health Center	<b>Others</b>	Other Staff
<b>HC (NB)</b>	Health Center no building	<b>PHD</b>	Provincial Health Department
<b>HP</b>	Health Post	<b>Pop 04-05</b>	Population Covered 2004 or 2005
<b>MA</b>	Medical Assistant	<b>RH</b>	Referral Hospital
<b>MPA</b>	Minimum Package of Activities	<b>Vil Cov</b>	Village Covered
<b>MW1</b>	Primary Midwives	<b>VIL-HC</b>	Distance from Village to Health Center

### 11.1 Health Facilities in the Province, by Operational District

Pailin	OD	RH	HC	HP
Pailin	1	1	5	
<b>Total</b>	<b>1</b>	<b>1</b>	<b>5</b>	<b>0</b>

### 11.2 Health Facilities and Staff in the province, by Operational District

This table shows health facilities, staff and coverage of health facilities in each operational district.

No	Facility Name	Type	Class	Dr	Ma	Nu2	Nu1	Mw2	Mw1	Others	Com Cov	Vil Cov	Pop. 04-05
<b>Pailin Ville</b>													
1	Ou Chra	HC	MPA	0	3	2	3	0	0	1	2	18	7,049
2	Phnum Preal	HC	None MPA	0	0	0	0	0	0	5	2	14	7,187
3	Phsar Prum	HC(NB)	None	0	0	0	0	0	0	4	1	6	6,074
4	Phum Spung	HC	MPA	0	0	1	6	0	0	2	4	29	15,008
<b>Total:</b>				<b>0</b>	<b>3</b>	<b>3</b>	<b>9</b>	<b>0</b>	<b>0</b>	<b>12</b>	<b>9</b>	<b>67</b>	<b>35,318</b>

Source: MEDiCAM – Infrastructure - ([http://www.medicam-cambodia.org/hsi/health\\_system/srch/index.asp?cboLcn=6&cmdSearch=Search&cboCHName=&cboType=](http://www.medicam-cambodia.org/hsi/health_system/srch/index.asp?cboLcn=6&cmdSearch=Search&cboCHName=&cboType=))

### 11.3 Deliveries in 2007 in the Province, by Operational District

OD	Deliveries	Deliveries at home		Deliveries	Total deliveries	Total deliveries
	at HC	By Health Staff	ByTBAs	at RH	by Health Staff	by health staff and TBAs
Pailan	297	91	404	289	677	1081
<i>Sub-total</i>	<i>297</i>	<i>91</i>	<i>404</i>	<i>289</i>	<i>677</i>	<i>1081</i>

Source: MoH, Annual Statistics 2007

## 12 Education<sup>3</sup>

### 12.1 Schools, Classes, Students, Staff, for for all levels, for 2007/2008 by District

District	Number of Schools	Disadv. Schools	Number of Classes	Classes in Pagoda	Enrollment		Repeaters		Teaching Staff		Non-Teaching Staff		Total Staff	
					Total	Girl	Total	Girl	Total	Female	Total	Female	Total	Female
Pailin	35	1	225	0	8,731	4,017	569	200	214	89	48	14	262	103
Sala Krao	29	0	172	0	6,554	3,073	897	367	105	29	18	1	123	30
<b>Whole Province</b>	64	1	397	0	15,285	7,090	1,466	567	319	118	66	15	385	133
- Urban Area	64	1	397	0	15,285	7,090	1,466	567	319	118	66	15	385	133

### 12.2 Characteristics of Schools and School Principals for 2007/2008 by Commune

Commune	Number of Schools				2 - Shift	Floating	Schools	Attached	Schools Without			Characteristics of School Principals (Incharge)			
	Pre-Sch	Primary	College	Lycee	Schools	Schools	in Pagoda	Pre-Sch	Water Sup.	Latrine		Avg. Age	Avg. Service	U.Sec+ Ed.	Female
Sala Krau	0	5	0	0	5	0	0	0	5	3		26.6	6.4	2	2
Stueng Trang	0	6	1	0	6	0	0	0	1	1		26.6	4.4	5	1
Stueng Kach	2	8	1	0	7	0	0	2	2	4		27.4	7.2	7	0
Ou Andoung	1	4	0	1	4	0	0	1	5	4		41.3	13.5	1	0

<sup>3</sup> All the data for section 12 comes from the Ministry of Education, Youth and Sport (MoEYS)

**12.3 Enrolment by Level of Education, 2006/2007 by Commune**

Commune	School	Pre school		Primary School		Lower Secondary School		Upper Secondary School		Enrolment	
		Total	Female	Total	Female	Total	Female	Total	Female	Total	Female
Sala Krau	4	0	0	547	238	0	0	0	0	547	238
Stueng Trang	6	0	0	1515	688	54	18	0	0	1569	706
Stueng Kach	11	57	28	2371	1116	104	29	0	0	2532	1173
Ou Andoung	5	53	23	1465	729	299	117	0	0	1817	869

**12.4 Enrolment by Level of Education, 2007/2008 by Commune**

Commune	School	Pre school		Primary School		Lower Secondary School		Upper Secondary School		Enrolment	
		Total	Female	Total	Female	Total	Female	Total	Female	Total	Female
Sala Krau	5	0	0	604	268	0	0	0	0	604	268
Stueng Trang	7	0	0	1509	698	79	28	0	0	1588	726
Stueng Kach	11	57	31	2229	1025	142	49	0	0	2428	1105
Ou Andoung	6	21	11	1532	789	340	161	41	13	1934	974

**12.5 Aspects of Enrolment for 2007/2008 by Commune**

Commune	% Repeaters (Total)			% Over-age Enrollment (Total)			% Repeaters (Girl)			% Over-age Enrollment (Girl)		
	Primary	L.Sec.	U.Sec.	Primary	L.Sec.	U.Sec.	Primary	L.Sec.	U.Sec.	Primary	L.Sec.	U.Sec.
Sala Krau	11.8	0.0	0.0	32.5	0.0	0.0	9.7	0.0	0.0	29.1	0.0	0.0
Stueng Trang	12.9	0.0	0.0	24.3	65.8	0.0	12.5	0.0	0.0	25.5	60.7	0.0
Stueng Kach	15.4	0.0	0.0	34.2	58.5	0.0	13.4	0.0	0.0	33.1	57.1	0.0
Ou Andoung	18.9	0.0	0.0	29.2	70.3	53.7	14.8	0.0	0.0	28.6	65.2	53.8

**12.6 School Buildings for all schools in the District for 2007/2008, by Commune**

Commune	Total Number of		Concrete/Brick Structure		Wooden Structure		Bamboo Structure		New Buildings		Buildings Without Good		
	Buildings	Rooms	Buildings	Rooms	Buildings	Rooms	Buildings	Rooms	Repaired	Constructed	Floor	Roof	Wall
Sala Krau	6	14	3	11	3	3	0	0	0	0	0	0	0
Stueng Trang	8	31	7	28	0	0	1	3	0	2	0	0	0
Stueng Kach	12	52	10	48	2	4	0	0	0	0	0	0	1
Ou Andoung	11	34	5	25	6	9	0	0	0	0	0	0	0

**12.7 Conditions of Classrooms and Existence of Separate School Office and Library, by Commune**

Commune	Number of Class rooms	Number of Classrooms			Classrooms Without Good			Number of Furniture needed				Schools with Separate	
		in Pagoda	New Repaired	New Constr.	Floor	Roof	Wall	Desks	Chairs	Black-board	Teacher Table	Office	Library
Sala Krau	11	0	0	0	0	0	0	0	0	0	0	0	0
Stueng Trang	25	0	0	7	0	0	0	0	0	1	1	3	0
Stueng Kach	41	0	6	0	0	0	2	10	2	2	2	6	3
Ou Andoung	23	0	0	0	0	0	0	0	0	0	0	1	1

**12.8 Community Participation and Financing across all schools in the District for 2007/2008 by Commune**

Commune	Parent Association				Comm. Teachers	Teaching Monks	PAP Fund (Riel)		Number of Schools Obtaining Funds from				
	Exists	Held Meet	Total	Female			per Student	per School	Sch. Income	Community	Gvt. For building	Abroad	IOs/NGOs
Sala Krau	2	2	6	2	0	0	11,029	2,073,440	0	0	0	0	0
Stueng Trang	6	6	5	1	0	0	10,512	2,365,133	0	1	1	0	2
Stueng Kach	8	8	5	1	0	0	9,912	3,272,214	1	1	0	0	1
Ou Andoung	3	3	7	2	0	0	10,797	5,898,953	0	0	0	0	0

**12.9 Percentage Student Flow Rates and Graduation by level 2006/2007, by Commune**

Commune	Primary Level (Grades 1-6)			Lower Secondary Level (Grades 7-9)			Upper Secondary Level (Grades 10-12)			Successful Candidates		
	Promotion	Repetition	Dropout	Promotion	Repetition	Dropout	Promotion	Repetition	Dropout	Grade 6	Grade 9	Grade 12
Sala Krau	68.9	13.0	18.1	0.0	0.0	0.0	0.0	0.0	0.0	20	0	0
Stueng Trang	57.0	12.8	30.2	63.0	0.0	37.0	0.0	0.0	0.0	62	0	0
Stueng Kach	69.1	14.5	16.4	87.5	0.0	12.5	0.0	0.0	0.0	162	16	0
Ou Andoung	69.6	19.7	10.7	78.6	0.0	21.4	0.0	0.0	0.0	67	48	0

## 13 Staff and Resources at the District

*This chapter presents data from the District Information System, collected around the middle of 2009 unless otherwise specified.*

### 13.1 District Councilors elected in 2009

Name	Sex	Year of Birth	Function	Phone
ប៉ា ហៀន	M	1942	Chairperson of The Council	011-626 735
លីម សុផល	M	1955	Councillor	012-519 816
ឃុន វណ្ណៈ	M	1956	Councillor	016-590 578
ឃឹម គន្ធា	M	1967	Councillor	016-936 771
យក់ ណុំ	F	1953	Councillor	017-686 148
នូ សុគុណ	M	1950	Councillor	011-494 456
សួន ហ៊ឹម	M	1941	Councillor	012-756 133
ទីវ សាឌីន	M	1949	Councillor	016-779 599
ហួត យន	M	1949	Councillor	
ហង់ សាអែម	M	1952	Councillor	016-395 871
ហាន លីហៀង	M	1970	Councillor	011-973 827
សុខ ថន	M	1958	Councillor	092-839 145
លួន លន់	M	1940	Councillor	092-481 906

### 13.2 Committees of the Council

*Please note at the time of producing the district data books the composition of the committees was not known for all district councils and therefore data were not available for 13.2.1, 13.2.2, 13.2.3.*

#### 13.2.1 Technical Facilitation Committee

#### 13.2.2 Women's and Children's Affairs Committee

#### 13.2.3 Procurement Committee

### 13.3 Board of Governors

Name	Sex	DoB	Function	Salary Level	Body	Phone
ywm LaMg	M	1954	District Governor	k>3>6	High Ranking Civil Servant	012-444 517
Guln b'unll	M	1964	District Deputy Governor	x>1>4	Medium Civil Servant	092-751 111
Ca laP	F	1964	District Deputy Governor			016-717 445
bln hln	M	1962	District Deputy Governor	X>3>10	Administrative Agent	012-160 7171

### 13.4 Offices under Sala Krong, Sala Srok and Sala Khan

Office Name	Chief		Deputy Chief		No. of Staff				Office Area (m2)	No of vehicle (public or program)	
					State		Contract			vehicle	moto
	M	F	M	F	M	F	M	F			
District/ Khan Cabinet	1	0	1	0	4	0	0	0	4	0	0
Adminnistration Office	1	0	1	0	1	0	0	0	Borrow	0	0
Economy Office	1	0	1	0	1	0	0	0	Borrow	0	0
Social Affair Office	1	0	1	0	0	1	0	0	Borrow	0	0

### 13.5 Municipality/District/Khan line offices

Office Name	Chief		Deputy Chief		No. of Staff				Office Area (m2)	No of vehicle (public or program)	
					State		Contract				
	M	F	M	F	M	F	M	F		vehicle	moto
District/ Khan Police Headquarter	1	0	3	0	49	0	0	0	160	0	5
District/ Khan Military Police Headquarter	1	0	1	0	9	0	0	0	170	0	1
District/ Khan Military Subregion	1	0	2	0	115	0	0	0	234	0	0
Rural Development Office	0	0	0	0	5	3	0	0	Borrow	0	0
Women Affairs Office	0	1	0	1	0	2	0	0	Borrow	0	0
Education Office	0	0	0	0	127	30	0	0	Borrow	0	0
Agriculture Office	1	0	1	0	5	0	0	0	Borrow	0	0
Social Affairs Office	0	0	0	0	0	0	0	0	Borrow	0	0
Culture Office	1	0	0	0	1	0	0	0	Borrow	0	0
Cult and Religion Office	1	0	1	0	2	0	0	0	Borrow	0	0
Lan Management Office	0	0	0	0	10	0	4	0	Borrow	0	0
Tax Unit	1	0	1	0	4	0	0	0	Borrow	0	0



## 13.6 Properties and Equipment of District Administration

### 13.6.1 Buildings

Description	Unit	Number	Remark
Office building type			
- Concrete	building	0	
- Wood	building	0	
- Mixed	building	1	
Total floor space	m2		
- Concrete	m2	0	
- Wood	m2	0	
- Mixed	m2	160	
Building condition			
- Concrete	%	0	
- Wood	%	0	
- Mixed	%	40	
Office reserved land area	m2	0	
Total office land area	m2	8,640	

### 13.6.2 Means of Transport available at the District Administration

Description	Unit	Number	Remark
Vehicle (type, size and condition)	Vehicle	0	
Motorcycle (type, size and condition)	Motor	0	

### 13.6.3 Equipment in District Offices

Description	Unit	Number	Remark
Generator	per set	0	
Photocopy machine at the office	per set	1	
Private photocopy machine at the district town	place	1	
Telephone network (mobile line service)	network	0	
Telephone network (land line service)	network	0	
Fax (include Fax number)	per set	0	
Computer	per set	0	
Printer	per set	0	
Scanner	Per set	0	
Number of computers those can access Internet and email services in the municipality/ district/khan office (including the technical line offices (please provide the email address)	set	0	
Typewriters (including the technical line offices)	per set	1	
Staff of Municipality/district/khan office can use computer	person	3	

### 13.6.4 Equipment and facilities at the District Town

Description	Unit	Number	Remark
Availability of electricity at noon	Nr Hours	0	
Private internet and email services in the municipality/ district/khan town.	place	0	

## **13.7 Registered Revenue of the District Administration in 2008<sup>4</sup>**

### **13.8 Services in the District**

#### **13.8.1 Public Sector Services**

Type of Infrastructure/services	Unit	Number	
		Public	Private
Schools			
Pre-school	room		
Primary School	room	114	0
Secondary school	room	20	0
High School	room	5	0
University	room		
Health			
Health post	place		
Health center	place	3	0
Referral Hospital	bed		

## **13.9 Civil Society Organizations active in the District**

### **13.9.1 NGOs, Associations, Programs and Projects**

### **13.9.2 Political Parties active in the Municipality, District and Khan**

<sup>4</sup> Please note that the data in this table are at best estimates. If the table appears blank it does not mean there is no revenue, just that the data have not been recorded/entered.

### 13.10 Private Sector Organizations

#### 13.10.1 Registered Companies in 2008, by District

On private sector at commune and/or district level	PLN	Pailin	Salakrau
<b>Businesses and Companies</b>			
Number of registered agricultural enterprises (except family farms)	22	19	3
Number of registered shops, restaurants, transporters and other services	36	32	4
Number of manufacturing companies	3	3	n/a
Number of registered forestry enterprises	8	7	1
Number of registered mining companies	1	0	1
Number of financial institutions	6	3	3
Number of other commercial institutions	3	0	3
Estimated number of informal enterprises (not registered)	n/a	n/a	n/a
<b>Employment</b>			
Number of people employed in 2008 by companies or any other enterprises	422	54	368
<b>Investment</b>			
Amount invested in 2008 by private sector (\$)	n/a	n/a	n/a
<b>Markets</b>			
Number of markets, operating at least weekly	3	1	2

**Note:** These data are not comprehensive as different companies and business are registered with different departments and not all departments were able or willing to provide detailed information. The number of informal enterprises reflects a rough estimate, made at provincial level and could not be verified.

**Source:** Unofficially collected at Provincial Level

#### 13.10.2 Farmers in 2008, by District

Credit	PLN	Pailin	Salakrau
Volume of credit provided to farmers in 2008 (\$)	3,507,307	\$ 2,542,255	965,052
Number of farmers receiving credit in 2008	1,135	642	493
Volume of credit provided to companies in 2008 (\$)	n/a	n/a	n/a

**Note:** Please note that these data are not necessarily complete or correct. The data are derived from government agencies at provincial and district level which used different recording systems, did not always have complete data or were, sometimes, less than willing to share their data.

**Source:** Unofficially collected at Provincial Level



## **SECTION E: POVERTY DATA**



## 14 Data on Poverty

### 14.1 Predicted Poverty Rates for 2009, by commune

The **Predicted Family Poverty Rate** is based on a statistical model (robust multilevel mixed effect regression) at village level developed by the NCDD M&E Unit and uses CDB data for making an estimate of the predicted poverty rate (this is: *the portion of total families in the district or commune who are expected to be poor*) for the following year using current year data.

The basis for this predicted poverty rate also uses IDPoor (a project of the Ministry of Planning with technical assistance provided by GTZ) data

Commune	2004	2009
Sala Krau	47.90%	39%
Stueng Trang	49.70%	43.70%
Stueng Kach	41%	30.30%
Ou Andoung	43.80%	33.50%

### 14.2 Poverty data from survey

#### 14.2.1 Identification of Poor Households Program (IDPoor)

The Ministry of Planning IDPoor Program has developed standardized Procedures for Identification of Poor Households in rural areas. These Procedures are implemented using a participatory and consultative process by sub-national government structures and community representatives.

The IDPoor Program is managed by the Ministry of Planning (MOP), in cooperation with the Ministry of Interior's Department of Local Administration (DOLA). The program is supported by the Federal Republic of Germany, with technical assistance provided by German Technical Cooperation (GTZ). In 2009, AusAID also provided funding support to the Program.

#### Objective

The IDPoor Program aims to implement the Procedures for Identification of Poor Households in rural areas as widely as possible, in order to provide data on the level of poverty of areas and households that can be used by a large range of institutions and organizations for targeting services and development assistance to poor areas and poor households.

**Coverage:** During 2007, 2008 and 2009 the IDPoor Procedures have been implemented in 18 provinces (with partial or complete coverage), covering a total of around 7000 rural villages. The MOP and a number of NGO partners who are Health Equity Fund Operators have collaborated in collecting this data from different areas.

**Categorization:** Identified poor households are classified under two poverty categories: Poor Level 1 (very poor), and Poor Level 2 (poor). Households are classified based on data collected using a standard questionnaire, together with consideration by villagers of these households' special circumstances.

**Further information:** Please go to the IDPoor Program webpage at [www.mop.gov.kh/Projects/IDPoor/tabid/154/Default.aspx](http://www.mop.gov.kh/Projects/IDPoor/tabid/154/Default.aspx)

*This District has not yet been covered by IDPoor*